

K



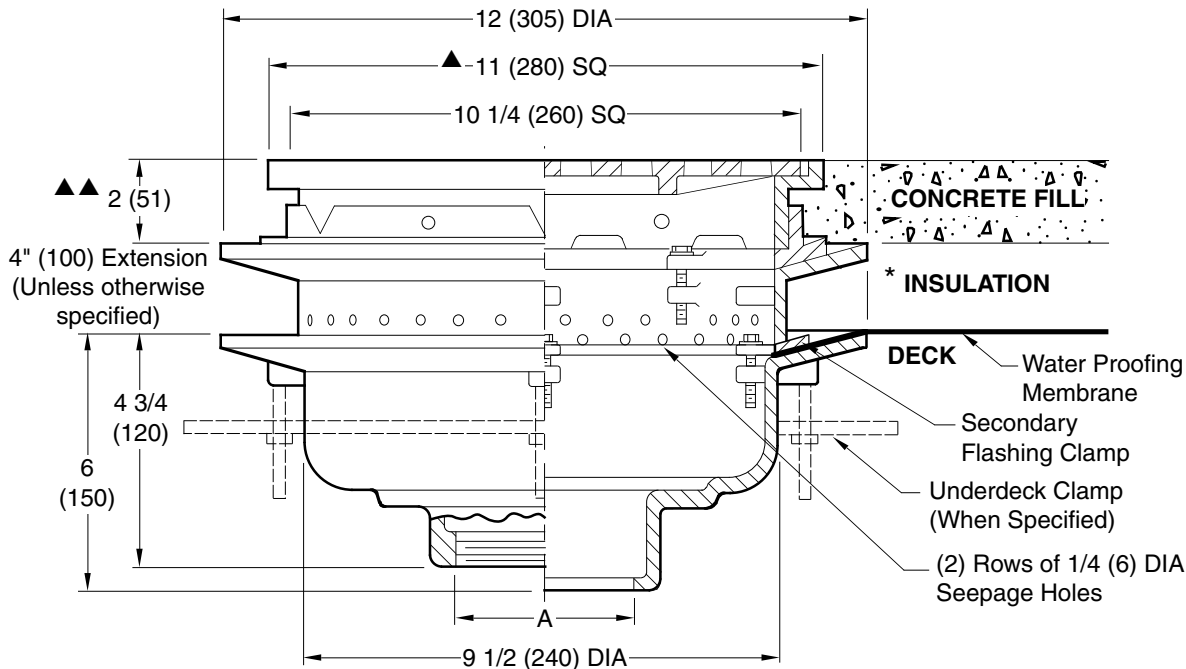
JAY R. SMITH MFG. CO.®
 DIVISION OF SMITH INDUSTRIES, INC.
 POST OFFICE BOX 3237
 MONTGOMERY, ALABAMA 36109-0237 (USA)
 TEL: 334-277-8520 FAX: 334-272-7396 www.jrsmith.com



MEMBER OF:

LOCATION

PROMENADE DECK DRAIN FOR INSULATED ROOF DECKS



A (Pipe Size) = 02(50),03(75),04(100),05(125) & 06(150)

Fig. 1459C CAULK OUTLET
 Fig. 1459Y NO-HUB OUTLET

- ▲ Add 1/4"(6) when bronze top is specified.
- ▲▲ Add 1/8"(3) when bronze top is specified.

recommended deck opening	
with suffix -R	13 (330) DIA
less suffix -R	11 (280) DIA

REGULARLY FURNISHED:
 Duco Cast Iron Body and 4" (100) Extension with Secondary Flashing Clamp and Seepage Openings with Secured Square Hole Grate.

VARIATIONS:

- Expansion Joint (Specify Fig. 1710)
- Extension (Specify Height) -E
- "L" Shaped Underdeck Clamp -CL
- L Speedi-Set Service Weight
02(50), 03(75) & 04"(100) sizes only
- LXH Speedi-Set Extra Heavy
02(50), 03(75) & 04"(100) sizes only
- NO-HUB Adaptor (Specify Fig. 2646Y)
- Sump Receiver -R
- Underdeck Clamp -C
- Vandal Proof Grate -U
- T Threaded Outlet
- S.S. Perforated Extension

OPTIONAL MATERIALS:

- Ductile Iron Grate -M
- Galvanized Cast Iron -G
- Nickel Bronze Top -NB
- Polished Bronze Top -PB

* On some systems this layer includes a layer of pea gravel and a layer of insulation.

NOTE: Dimensions shown in parentheses are in millimeters.

DRAWING NUMBER
S1459

SIZE
A

SCALE:
NONE

DATE:
2-2-82

APPROVED BY:
JM

CHECKED BY:
JM

DRAWN BY:
KG

1459

WE CAN ASSUME NO RESPONSIBILITY FOR USE OF SUPERSEDED OR VOID DATA

DIMENSIONS ARE SUBJECT TO MANUFACTURERS TOLERANCE AND CHANGE WITHOUT NOTICE

K	7-18-00	Revised Variations	TBW
J	6-16-99	Revised millimeters	CMD
H	1-3-97	Revised Reg. Furn. & Extension	CMD
G	6-7-96	Added Millimeters	EMB
F	7-27-95	Revised Drawing	CMD
E	4-15-93	Chg'd Dwg. Var. & Opt Mat	EMB

BY	CKD. BY

WEIGHT
POUNDS

VOLUME
CUBIC FEET

FIGURE NUMBER

1459