

G



JAY R. SMITH MFG. CO.
 DIVISION OF SMITH INDUSTRIES, INC.
 POST OFFICE BOX 3237
 MONTGOMERY, ALABAMA 36109-0237 (USA)
 TEL: 334-277-8520 FAX: 334-272-7396 www.jrsmith.com



MEMBER OF:

LOCATION

PROMENADE DECK DRAINS

MEDIUM - 11" (280) SQUARE

FUNCTION: Medium size deck drain for use in flat roof decks. Body and accessories are compatible for installation in all types of roof construction. Square medium size top fits in with "block" patterns. This drain should only be used in areas of moderate flow requirements.

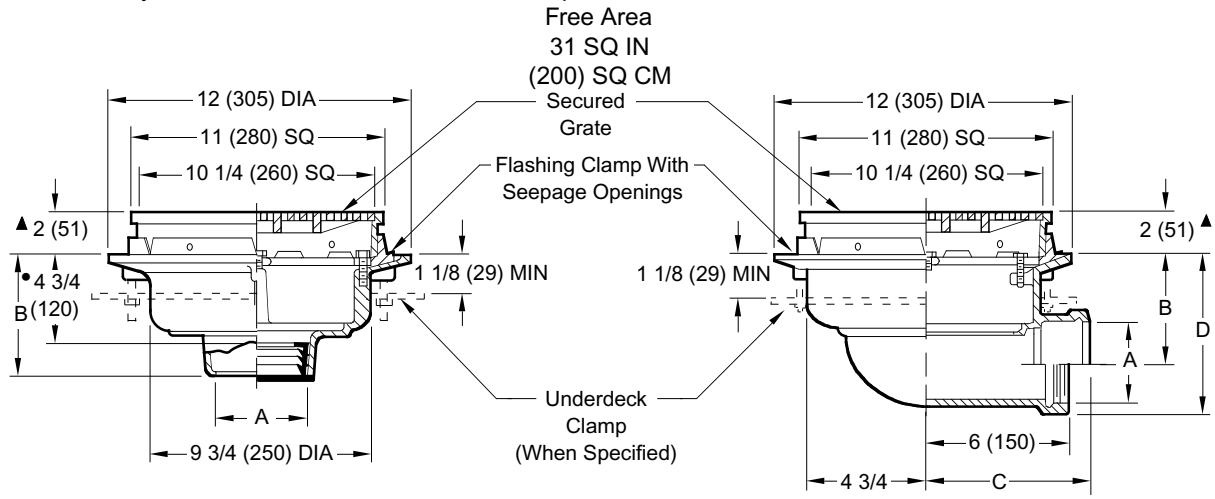


Fig. 1450C CAULK OUTLET
 Fig. 1450Y NO-HUB OUTLET

Fig. 1460C CAULK OUTLET
 Fig. 1460T THREADED OUTLET

A SIZE	02	03	04	05	06
	(50)	(75)	(100)	(125)	(150)
B	6 (150) for Caulk, NO-HUB and Speedi-Set 4 3/4 (120) for Threaded				

recommended deck opening	
with suffix -R	17 (430) DIA
less Suffix -R	14 (355) DIA

A SIZE	02 (50)	03 (75)	04 (100)
B	4 1/2 (115)	4 (100)	3 1/2 (89)
C	7 1/4 (185)	7 1/2 (190)	7 3/4 (195)
D	6 1/2 (165)	6 5/8 (168)	6 5/8 (168)

• This Dimension to Internal Stop of Speedi-Set Gasket.

▲ Add 3/16" (5) when bronze top is specified.

NOTE: Dimensions shown in parentheses are in millimeters.

REGULARLY FURNISHED:

Duco Cast Iron Body and Flashing Clamp with Seepage Openings and Secured Square Hole Light Duty Grate.

VARIATIONS:

- Expansion Joint (Specify Fig. 1710) (Fig. 1450 only)
- Extension (Specify Height) -E
- L Speedi-Set Service Weight 02(50), 03(75) & 04"(100) sizes only (Fig. 1450 only)
- LXH Speedi-Set Extra Heavy 02(50), 03(75) & 04"(100) sizes only (Fig. 1450 only)
- Underdeck Clamp -C
- NO-HUB Adaptor (Specify Fig. 2646Y) (Fig. 1460 only)
- Secondary Flashing Clamp -C2
- Sump Receiver -R
- Vandal Proof Grate -U
- T Threaded Outlet

OPTIONAL MATERIALS:

- Ductile Iron Grate -M
- Galvanized Cast Iron -G
- Nickel Bronze Top -NB
- Polished Bronze Top -PB

NOTE: Floor drains or area drains used to drain areas subject to rainfall should have an open area equal to twice the cross sectional area of the connecting pipe.

DRAWING NUMBER

S1450

SIZE

A

SCALE:

NONE

DATE:

5-24-85

APPROVED BY:

TD

CHECKED BY:

TD

DRAWN BY:

PJ

FIGURE NUMBER

1450, 1460

WE CAN ASSUME NO RESPONSIBILITY FOR USE OF SUPERSEDED OR VOID DATA

DIMENSIONS ARE SUBJECT TO MANUFACTURERS TOLERANCE AND CHANGE WITHOUT NOTICE

REV.	DATE	DESCRIPTION	BY	CKD. BY
G	2-2-01	Rev. Opt. Mat.	RN	BS
F	5-26-99	Rev. Opt. Mat.	CMD	BS
E	6-13-95	Added Millimeters	EMB	BS
D	6-30-94	Revised	EMB	BS
C	11-3-93	Chg'd Dim & Table	EMB	BS
B	6-4-93	Submittal Update	EMB	BS

WEIGHT
POUNDSVOLUME
CUBIC FEET

FIGURE NUMBER

1450, 1460