

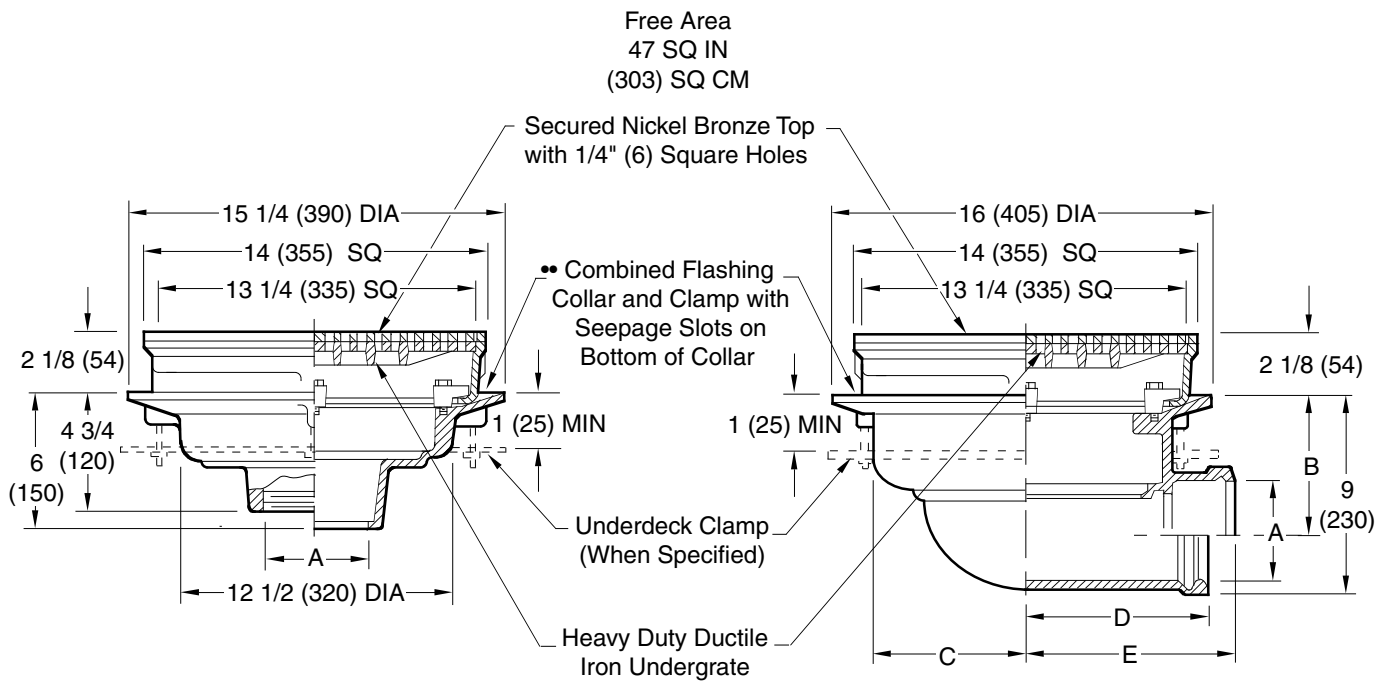
HEEL-PROOF PROMENADE DECK DRAIN

WITH HEAVY DUTY FINISHED NICKEL BRONZE TOP

FUNCTION: Used in finished promenade decks, malls, civic or cultural plazas and finished walking areas over underground parking garages. Finished nickel bronze top is veneered over extra heavy duty ductile iron undergrate. Designed for heel-proof safety, heavy load strength and attractive appearance.

DRAWING NUMBER S1412
 SIZE A
 SCALE: NONE
 DATE: 3-30-70
 APPROVED BY:
 CHECKED BY: BH
 DRAWN BY: RK
 FIGURE NUMBER 1412, 1422

WE CAN ASSUME NO RESPONSIBILITY FOR USE OF SUPERSEDED OR VOID DATA
 DIMENSIONS ARE SUBJECT TO MANUFACTURERS TOLERANCE AND CHANGE WITHOUT NOTICE



A (Pipe Size) = 02(50), 03(75), 04(100), 05(125), or 06(150)

- Fig.1412C ... INSIDE CAULK OUTLET
- Fig.1412T ... THREADED OUTLET

- Fig. 1422C ... INSIDE CAULK OUTLET
- Fig. 1422T ... THREADED OUTLET

A SIZE	02 (50)	03 (75)	04 (100)	05 (125)	06 (150)
B	6 7/8 (175)	6 3/8 (162)	5 1/8 (130)	5 (125)	4 1/2 (115)
C	4 3/4 (120)	4 3/4 (120)	4 3/4 (120)	6 1/4 (160)	6 1/4 (160)
D	6 (150)	6 (150)	6 (150)	6 1/2 (165)	6 1/2 (165)
E	6 3/4 (170)	6 3/4 (170)	6 3/4 (170)	7 3/4 (195)	7 3/4 (195)

recommended deck opening

with suffix -R	17 (430) DIA
less suffix -R	14 (355) DIA

••Specify Suffix-W for Applications Requiring "Loose-Set" Pavers

NOTE: Dimensions shown in parentheses are in millimeters.

NOTE: 02(50),03(75) & 04(100) sizes requires a transition collar (not Shown in above illustration) which fits between the body & collar. Above illustration is typical for the 05(125) & 06"(150) sizes.

REGULARLY FURNISHED:
 Duco Cast Iron Body and Combined Flashing Collar and Clamp and Secured 1/4"(6) Square Hole Nickel Bronze Grate Veneered over Ductile Iron Undergrate.

VARIATIONS:

- Underdeck Clamp -C
- Extension (Specify Height) -E
- Sump Receiver -R
- Expansion Joint (Specify Fig. 1710)
- 3/8"(10) Dia. Holes -(8) Req'd -WSH

OPTIONAL MATERIALS:

- Galvanized Body -G
- Polished Bronze Top -PB

REV.	DATE	DESCRIPTION	BY	CKD. BY	WEIGHT POUNDS	VOLUME CUBIC FEET	FIGURE NUMBER
H	12/13/99	Submittal Update	JJ	JCS			1412, 1422
G	05/21/96	Submittal Update	EMB	JCS			
F	09/29/92	Rev Variations & Changed Dims	TWK	JCS			