

G



JAY R. SMITH MFG. CO.
 DIVISION OF SMITH INDUSTRIES, INC.
 POST OFFICE BOX 3237
 MONTGOMERY, ALABAMA 36109-0237 (USA)
 TEL: 334-277-8520 FAX: 334-272-7396 www.jrsmith.com



LOCATION

DRAWING NUMBER
S1110, 1120

SIZE
A

SCALE:
NONE

DATE:
5-27-70

APPROVED BY:

CHECKED BY:
BH

DRAWN BY:
JLS

1110, 1120

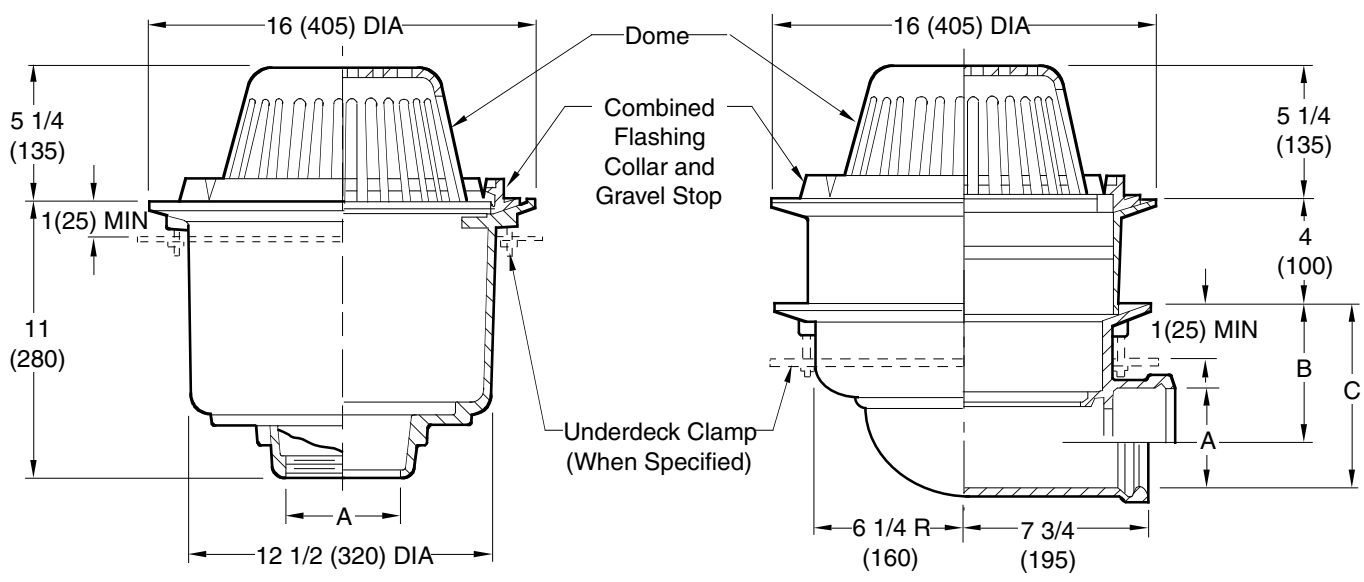
FIGURE NUMBER

DEEP SUMP HEAVY DOWNPOUR ROOF DRAINS

16" (405) DIAMETER - LOW PROFILE DOME

FUNCTION: Used on flat roofs of any construction in areas where unusually heavy rains occur. Deep sump drains excess water and allows entrapped air to escape before entering leaders.

Free Area
 102.5 SQ IN
 (661) SQ CM



A (Pipe Size) 02(50), 03(80), 04(100), 05(125), or 06(150)

Fig. 1110C ...CAULK OUTLET
 Fig. 1110T ...THREADED OUTLET

Fig. 1120T ...THREADED OUTLET
 Fig. 1120C ...CAULK OUTLET

NOTE: 02(50), 03(80), 04(100) sizes requires a transition collar (not shown in above illustration) which fits between the body & collar. Above illustration is typical for the 05"(125) & 06"(150) sizes.

recommended deck opening	
with suffix -R	17 (430) DIA
less suffix -R	14 (355) DIA

A	02(50)	03(80)	04(100)	05(125)	06(150)
B	6 7/8(175)	6 3/8(162)	5 7/8(149)	5(125)	4 1/2(115)
C	9(230)			8 1/2(215)	

REGULARLY FURNISHED:
 Duco Cast Iron Body With Combined Flashing Collar And Gravel Stop With Polyethylene Dome.

- VARIATIONS:**
- Expansion Joint (Specify Fig. 1710)
 - Extension (Specify Height) -E
 - Sump Receiver -R
 - Underdeck Clamp -C

- OPTIONAL MATERIALS:**
- ▲ Aluminum Dome -AD
 - ▲ Cast Iron Dome -CID
 - Galvanized -G
 - ▲ Rough Bronze Dome -RBD

NOTE: Dimensions shown in parentheses are in millimeters.

▲ **Optional domes' free area are as follows:**
 Aluminum 98 (632)
 Cast Iron 80 (516)
 Bronze 95 (613)

G	06/04/09	Added Optional Dome Notes	JJ	CL
F	5-3-96	Submittal Update	EMB	BS
REV.	DATE	DESCRIPTION	BY	CKD. BY

WEIGHT POUNDS
 VOLUME CUBIC FEET

FIGURE NUMBER
1110, 1120

WE CAN ASSUME NO RESPONSIBILITY FOR USE OF SUPERSEDED OR VOID DATA

DIMENSIONS ARE SUBJECT TO MANUFACTURERS TOLERANCE AND CHANGE WITHOUT NOTICE