

**DRAWING NUMBER S1074-SO**

**SIZE A**

**SCALE: NONE**

**DATE: 08/11/05**

**APPROVED BY: AM**

**CHECKED BY: AM**

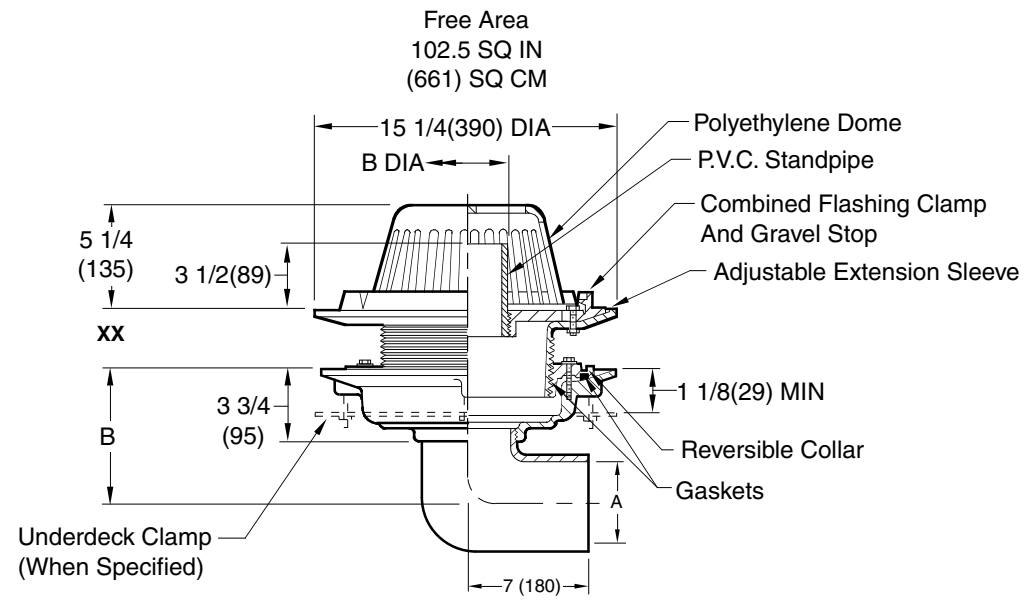
**DRAWN BY: JJ**

**1074-SO**

**LARGE GENERAL PURPOSE ROOF DRAINS**

**ADJUSTABLE TOP WITH STANDPIPE**

**FUNCTION:** Used in flat roofs of any construction where a constant height of water is desired on the roof. It is also used on conventional roofs as a safety overflow, which receives water only when the build-up is greater than the setting of the cut standpipe. Standpipe type water dam can be cut to achieve various water depths on the roof. Wide clamping surface holds flashing and roofing materials without puncturing. Large low profile dome provides sufficient free area for quick drainage of rain water and protects the drain sump and connected piping from the intrusion of debris.



A(Pipe Size)	02(50)	03(75)	04(100)	05(125)	06(150)
B (DIA)	5 1/2(140)	6(150)	6 1/4(160)	7(180)	7 1/2(190)

XX	MIN	MAX
Low Position	1 1/4(32)	2 1/2(64)
High Position	2 1/4(57)	4 (100)

Fig. 1074-SO . . . . NO-HUB SIDE OUTLET

**recommended deck opening**

with suffix-R	17(430) DIA
less suffix-R	14(355) DIA

**REGULARLY FURNISHED:**

Duco Cast Iron Body with Side Outlet Elbow, Adjustable Extension Sleeve, Reversible Collar, P.V.C. Standpipe, Polyethylene Dome and Combined Flashing Clamp and Gravel Stop.

**VARIATIONS:**

- Extension (Specify Height) -E
  - E02, 2"(51)
  - E04, 4"(100)
  - E06, 6"(150)
- "L" Shaped Underdeck Clamp -CL
- Secondary Flashing Clamp -C2
- Sump Receiver -R
- Underdeck Clamp -C
- Vandal Proof Dome -U
- T Threaded Outlet

**OPTIONAL MATERIALS:**

- Aluminum Dome -AD
- Bronze Standpipe -BZS
- Cast Iron Dome -CID
- Cast Iron Standpipe -CIS
- Galvanized Cast Iron Body & Collar -G
- Galvanized Cast Iron Dome -CIDG
- Rough Bronze Dome -RBD

**NOTE:** Dimensions shown in parentheses are in millimeters.

<b>FIGURE NUMBER</b>	<b>B</b>	<b>6-5-06</b>	<b>Revised Dim</b>	<b>TBW</b>	<b>AM</b>	<b>WEIGHT POUNDS</b>	<b>VOLUME CUBIC FEET</b>	<b>FIGURE NUMBER</b>
	<b>A</b>	<b>08/25/05</b>	<b>Added No-Hub to Side Outlet</b>	<b>JJ</b>	<b>AM</b>			
	REV.	DATE	DESCRIPTION	BY	CKD. BY			

WE CAN ASSUME NO RESPONSIBILITY FOR USE OF SUPERSIZED OR VOID DATA

DIMENSIONS ARE SUBJECT TO MANUFACTURERS TOLERANCE AND CHANGE WITHOUT NOTICE