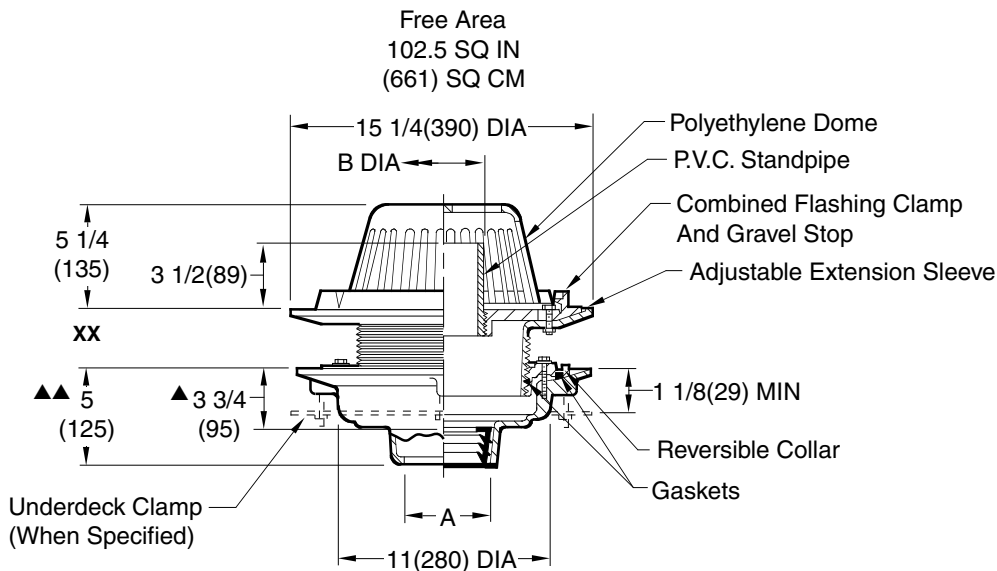


# LARGE GENERAL PURPOSE ROOF DRAINS

## ADJUSTABLE TOP WITH STANDPIPE

**FUNCTION:** Used in flat roofs of any construction where a constant height of water is desired on the roof. It is also used on conventional roofs as a safety overflow, which receives water only when the build-up is greater than the setting of the cut standpipe. Standpipe type water dam can be cut to achieve various water depths on the roof. Wide clamping surface holds flashing and roofing materials without puncturing. Large low profile dome provides sufficient free area for quick drainage of rain water and protects the drain sump and connected piping from the intrusion of debris.



- ▲ This Dimension to Internal Stop of Speedi-Set Gasket.
- ▲▲ Same for Caulk, NO-HUB and Speedi-Set. 3 3/4(95) for Threaded.

A(Pipe Size)	02(50)	03(75)	04(100)	05(125)	06(150)	08(200)
B (DIA)	4(100)	4(100)	4(100)	6(150)	6(150)	8(200)

<b>XX</b>	<b>MIN</b>	<b>MAX</b>
Low Position	1 1/4(32)	2 1/2(64)
High Position	2 1/4(57)	4(100)

- Fig. 1074C . . . . CAULK OUTLET
- Fig. 1074Y . . . . NO-HUB OUTLET

**recommended deck opening**

with suffix-R	17(430) DIA
less suffix-R	14(355) DIA

**REGULARLY FURNISHED:**  
 Duco Cast Iron Body with Adjustable Extension Sleeve, Reversible Collar, P.V.C. Standpipe, Polyethylene Dome and Combined Flashing Clamp and Gravel Stop.

- VARIATIONS:**
- Expansion Joint (Specify Fig. 1710)
  - Extension (Specify Height) -E  
 -E02, 2"(51)  
 -E04, 4"(100)  
 -E06, 6"(150)
  - "L" Shaped Underdeck Clamp -CL
  - L Speedi-Set Service Weight  
 02(50), 03(75) & 04(100) sizes only
  - LXH Speedi-Set Extra Heavy  
 02(50), 03(75) & 04(100) sizes only
  - Secondary Flashing Clamp -C2
  - Sump Receiver -R
  - Underdeck Clamp -C
  - Vandal Proof Dome -U
  - T Threaded Outlet

- OPTIONAL MATERIALS:**
- ▲ Aluminum Dome -AD
  - Bronze Standpipe -BZS
  - ▲ Cast Iron Dome -CID
  - Cast Iron Standpipe -CIS
  - Galvanized Cast Iron Body & Collar -G
  - ▲ Galvanized Cast Iron Dome -CIDG
  - ▲ Rough Bronze Dome -RBD

**NOTE:** Dimensions shown in parentheses are in millimeters.

**▲ Optional domes' free area are as follows:**  
 Aluminum 98 (632)  
 Cast Iron 80 (516)  
 Bronze 95 (613)

DRAWING NUMBER S1074  
 SIZE A  
 SCALE: NONE  
 DATE: 2-27-85  
 APPROVED BY: TD  
 CHECKED BY: JCS  
 DRAWN BY: VGD  
**1074**  
 DIMENSIONS ARE SUBJECT TO MANUFACTURERS TOLERANCE AND CHANGE WITHOUT NOTICE

WE CAN ASSUME NO RESPONSIBILITY FOR USE OF SUPERSEDED OR VOID DATA

FIGURE NUMBER	K J H	06/04/09 3-13-06 6-5-06	Added Optional Dome Notes Revised Table Revised Dim	JJ TBW TBW	CL TWK AM	WEIGHT POUNDS	VOLUME CUBIC FEET	FIGURE NUMBER <b>1074</b>
REV.	DATE	DESCRIPTION	BY	CKD. BY				