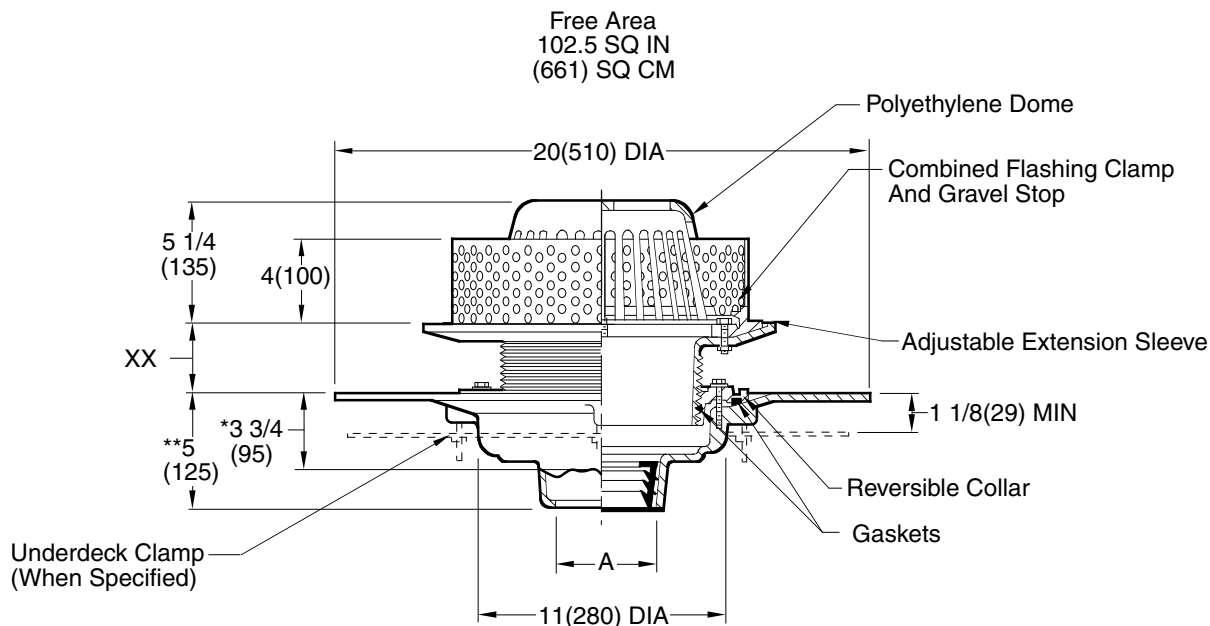


ROOF DRAINS

SPECIAL ROOF APPLICATIONS

FUNCTION: Used on roof systems where the insulated membrane assembly method of waterproofing is provided, using built-up felt and asphalt. The adjustable extension sleeve permits adjustment from a min. of 1 1/4"(32) to max. of 4 "(100), easily accommodating 2 3/4"(70) of varying insulation thicknesses. The positive threading allows smooth perimeter movement and circumferential support of the top of any adjusted elevation. A 4"(100) high perforated stainless steel gravel guard is supplied to retain the crushed gravel used in flat roof construction.



Free Area
102.5 SQ IN
(661) SQ CM

A (Pipe Size) = 02(50), 03(80), 04(100), 05(125) or 06(150)

*This dimension to internal stop of Speedi-Set Gasket
 **Same for Caulk, NO-HUB and Speedi-Set, 3 3/4(95) for Threaded

Fig. 1039C CAULK OUTLET
 Fig. 1039Y NO-HUB OUTLET

XX	MIN	MAX
LOW POSITION	1 1/4(32)	2 1/2(64)
HIGH POSITION	2 1/4(57)	4(100)

NOTE: Recommended deck opening 14 3/4"(375).

REGULARLY FURNISHED:

Duco Cast Iron Body with Adjustable Extension Sleeve, 1/16"(2) Thick 4" (100) High Stainless Steel Perforated Gravel Guard with 3/8"(10) DIA Openings, Flashing Clamp and Polyethylene Dome.

VARIATIONS:

- Expansion Joint (Specify Fig. 1710)
- Higher Gravel Stop (Specify) -HGS
- "L" Shaped Underdeck Clamp -CL
- L Speedi-Set Service Weight 02(50), 03(80) & 04"(100) sizes only
- LXH Speedi-Set Extra Heavy 02(50), 03(80) & 04"(100) sizes only
- Underdeck Clamp -C
- Vandal Proof Dome -U
- T Threaded Outlet

OPTIONAL MATERIALS:

- Aluminum Dome -AD
- Cast Iron Dome -CID
- Galvanized Cast Iron -G
- Rough Bronze Dome -RBD

NOTE: Dimensions shown in parentheses are in millimeters.

DRAWING NUMBER
S1039

SIZE
A

SCALE:
NONE

DATE:
10-8-87

APPROVED BY:
CR

CHECKED BY:
BS

DRAWN BY:
EMB

1039

WE CAN ASSUME NO RESPONSIBILITY FOR USE OF SUPERSEDED OR VOID DATA

DIMENSIONS ARE SUBJECT TO MANUFACTURERS TOLERANCE AND CHANGE WITHOUT NOTICE

FIGURE NUMBER	B A	6-506 5-17-95	Revised Dim Revised and added millimeters	TBW CMB	AM BS	WEIGHT POUNDS	VOLUME CUBIC FEET	FIGURE NUMBER 1039
REV.	DATE	DESCRIPTION	BY	CKD. BY				