

D

SMITH® JAY R. SMITH MFG. CO.
 DIVISION OF SMITH INDUSTRIES, INC.
 POST OFFICE BOX 3237
 MONTGOMERY, ALABAMA 36109-0237 (USA)
 TEL: 334-277-8520 FAX: 334-272-7396 www.jrsmith.com



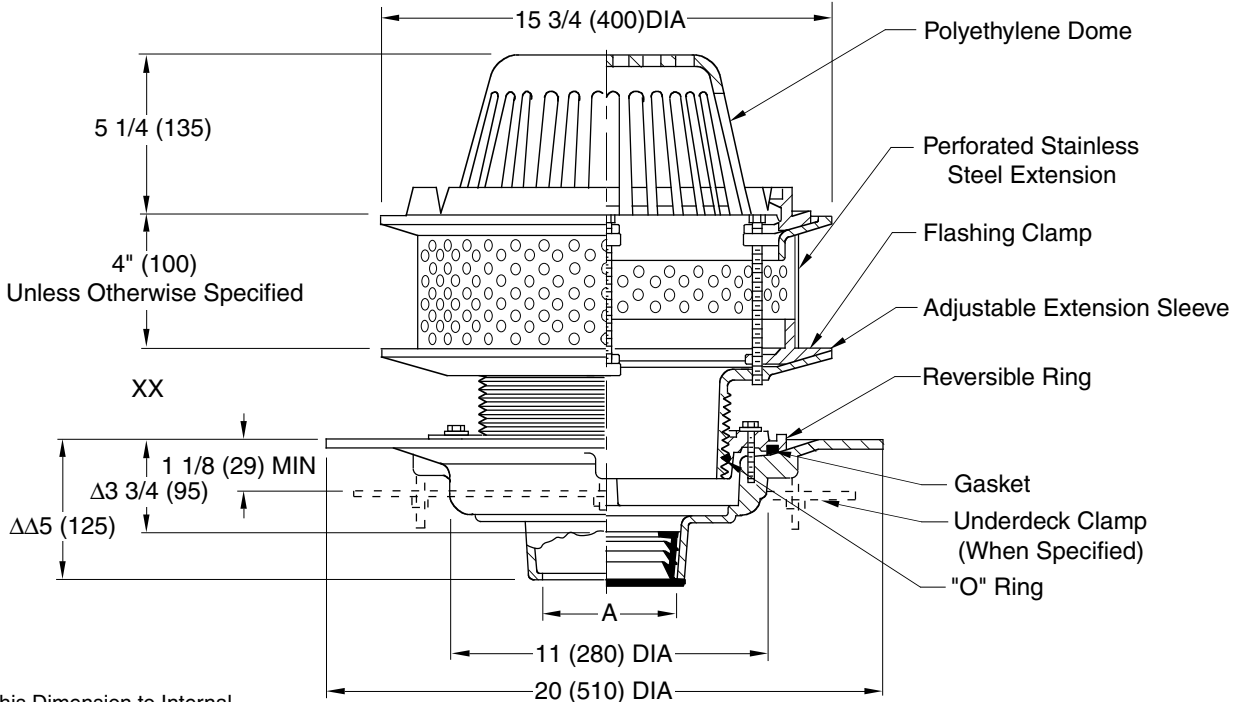
LOCATION

ROOF DRAINS

SPECIAL ROOF APPLICATIONS

FUNCTION: Used on roof systems where the insulated membrane assembly method of waterproofing is installed using a liquid membrane. The adjustable extension sleeve permits adjustment from a min of 1 1/4 (32) to a max of 4 (100) easily accommodating 2 3/4" (70) of varying insulation thicknesses. The positive threading allows smooth perimeter movement and circumferential support of the top at any adjusted elevation. A perforated stainless steel extension is supplied to retain the crushed gravel used in flat roof construction.

Free Area
 102.5 SQ IN
 (661) SQ CM



Δ This Dimension to Internal Stop of Speedi-Set Gasket.
 ΔΔ Same for caulk, NO-HUB and Speedi-Set, 3 3/4 (95) for Threaded.
NOTE: Dimensions shown in parentheses are in millimeters.
NOTE: Recommended deck opening 14 3/4" (375).

A (Pipe Size) = 02(50), 03(80), 04(100), 05(125) or 06(150)

Fig. 1038C-07 . . . CAULK OUTLET
 Fig. 1038Y-07 . . . NO-HUB OUTLET

	XX	MIN	MAX
Low Position	1 1/4 (32)	2 1/2 (64)	
High Position	2 1/4 (57)	4 (100)	

REGULARLY FURNISHED:

Duco Cast Iron Body with Adjustable Extension Sleeve, Perforated Stainless Steel Extension, Combined Flashing Clamp and Gravel Stop, and Polyethylene Dome

VARIATIONS:

- Expansion Joint (Specify Fig.1710) (Fig. 1010 only)
- Higher Gravel Stop (Specify Height) -HGS
- "L" Shaped Underdeck Clamp -CL
- "L" Speedi-Set Service Weight 02(50), 03(80), and 04"(100) sizes only (Fig. 1010 only)
- LXH Speedi-Set Extra Heavy 02(50), 03(80), and 04"(100) sizes only (Fig. 1010 only)
- Sump Receiver -R
- Underdeck Clamp -C
- Vandal Proof Dome -U
- T Threaded Outlet

OPTIONAL MATERIALS:

- Aluminum Dome -AD
- Cast Iron Dome -CID
- Galvanized Cast Iron -G
- Rough Bronze Dome -RBD

DRAWING NUMBER
S1038

SIZE
A

SCALE:
NONE

DATE:
10-8-87

APPROVED BY:
CR

CHECKED BY:
BS

DRAWN BY:
EMB

1038

WE CAN ASSUME NO RESPONSIBILITY FOR USE OF SUPERSEDED OR VOID DATA

DIMENSIONS ARE SUBJECT TO MANUFACTURERS TOLERANCE AND CHANGE WITHOUT NOTICE

D	6-5-06	Revised Dim	TBW	AM	WEIGHT POUNDS	VOLUME CUBIC FEET	FIGURE NUMBER 1038
C	5-18-95	Submittal Update	EMB	BS			
B	5-90	Chg Dim	TBW	BS			
A	2-90	Chg Dim	EMB	BS			
REV.	DATE	DESCRIPTION	BY	CKD. BY			