

1037 (-R-C)
 DRAWING NUMBER **S 1037 (-R-C)**
 SIZE **A**
 SCALE: **NONE**
 DATE: **9-20-88**
 APPROVED BY: **CR**
 CHECKED BY: **TD**
 DRAWN BY: **EMB**

SMITH® JAY R. SMITH MFG. CO.®
 DIVISION OF SMITH INDUSTRIES, INC.
 POST OFFICE BOX 3237
 MONTGOMERY, ALABAMA 36109-0237 (USA)
 TEL: 334-277-8520 FAX: 334-272-7396 www.jrsmith.com

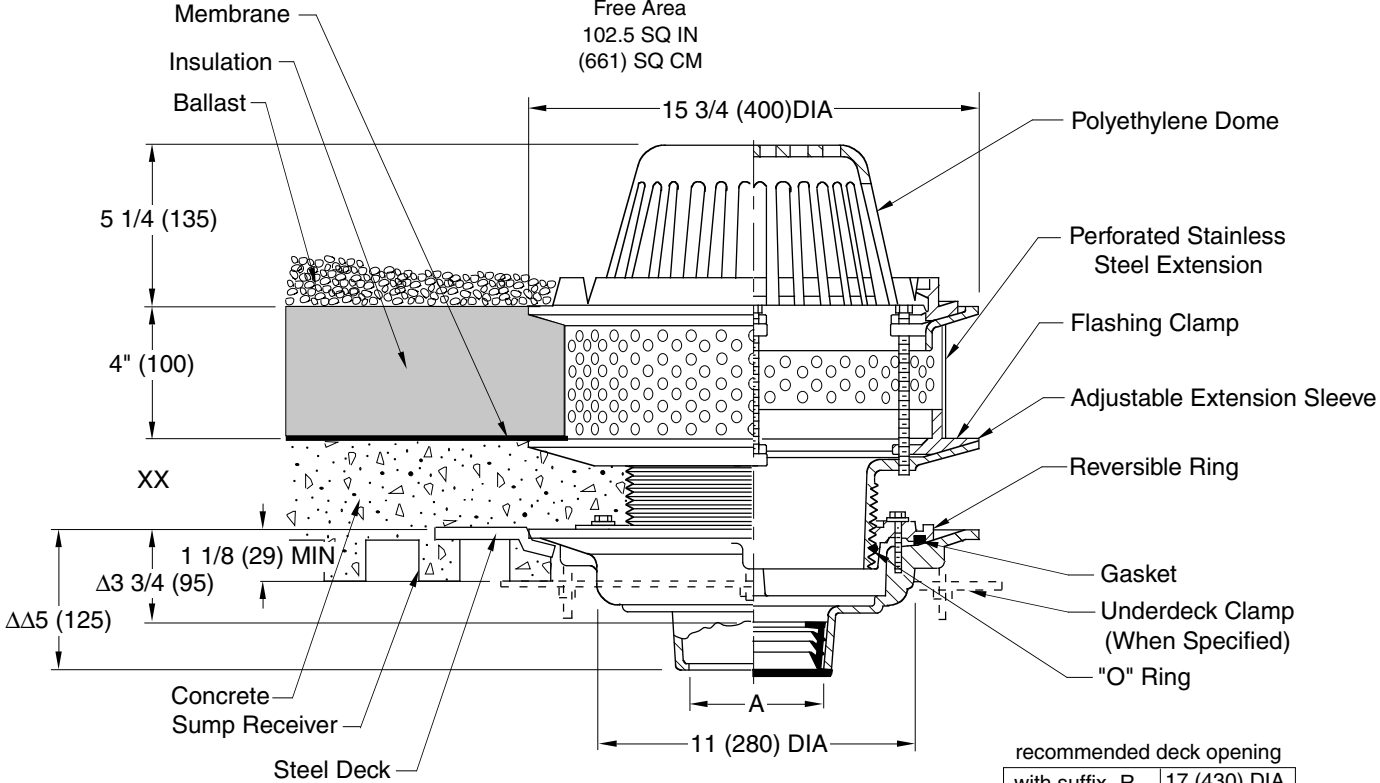


LOCATION

ROOF DRAINS

SPECIAL ROOF APPLICATIONS

FUNCTION: Used on roof systems where the insulated membrane assembly method of waterproofing is installed using a liquid membrane. The adjustable extension sleeve permits adjustment from a min of 1 1/4 (32) to a max of 4 (100) easily accommodating 2 3/4 (70) of varying insulation thicknesses. The positive threading allows smooth perimeter movement and circumferential support of the top at any adjusted elevation. A perforated stainless steel extension is supplied to retain the crushed gravel used in flat roof construction.



recommended deck opening	
with suffix -R	17 (430) DIA
less suffix -R	14 (355) DIA

Δ This Dimension to Internal Stop of Speedi-Set Gasket.
 ΔΔ Same for caulk, NO-HUB and Speedi-Set, 3 3/4 (95) for Threaded.
NOTE: Dimensions shown in parentheses are in millimeters.

A (Pipe Size) = 02(50), 03(80), 04(100), 05(125) or 06(150)

- Fig. 1037C . . . CAULK OUTLET
- Fig. 1037Y . . . NO-HUB OUTLET

	XX	MIN	MAX
Low Position	1 1/4 (32)	2 1/2 (64)	
High Position	2 1/4 (57)	4 (100)	

REGULARLY FURNISHED:
 Duco Cast Iron Body with Adjustable Extension Sleeve, Perforated Stainless Steel Extension, Combined Flashing Clamp and Gravel Stop, and Polyethylene Dome

- VARIATIONS:**
- Expansion Joint (Specify Fig.1710) (Fig. 1010 only)
 - Higher Gravel Stop (Specify Height) -HGS
 - "L" Shaped Underdeck Clamp -CL
 - L Speedi-Set Service Weight
02(50), 03(80), and 04"(100) sizes only (Fig. 1010 only)
 - LXH Speedi-Set Extra Heavy
02(50), 03(80), and 04"(100) sizes only (Fig. 1010 only)
 - Sump Receiver -R
 - Underdeck Clamp -C
 - Vandal Proof Dome -U
 - T Threaded Outlet

- OPTIONAL MATERIALS:**
- ▲ Aluminum Dome -AD
 - ▲ Cast Iron Dome -CID
 - Galvanized Cast Iron -G
 - ▲ Rough Bronze Dome -RBD

▲ Optional domes' free area are as follows:
 Aluminum 98 (632)
 Cast Iron 80 (516)
 Bronze 95 (613)

REV.	DATE	DESCRIPTION	BY	CKD. BY
C	06/04/09	Added Optional Dome Notes	JJ	CL
B	6-5-06	Revised Dim	TBW	AM
A	5-18-95	Submittal Update	EMB	BS

WEIGHT POUNDS
 VOLUME CUBIC FEET

FIGURE NUMBER
1037 (-R-C)

WE CAN ASSUME NO RESPONSIBILITY FOR USE OF SUPERSEDED OR VOID DATA
 DIMENSIONS ARE SUBJECT TO MANUFACTURERS TOLERANCE AND CHANGE WITHOUT NOTICE