

C

SMITH® JAY R. SMITH MFG. CO.
 DIVISION OF SMITH INDUSTRIES, INC.
 POST OFFICE BOX 3237
 MONTGOMERY, ALABAMA 36109-0237 (USA)
 TEL: 334-277-8520 FAX: 334-272-7396 www.jrsmith.com



LOCATION

DRAWING NUMBER
S1016/1026

SIZE
A

SCALE:
NONE

DATE:
2-21-85

APPROVED BY:
CR

CHECKED BY:
TD

DRAWN BY:
EMB

1016/1026

WE CAN ASSUME NO RESPONSIBILITY FOR USE OF SUPERSEDED OR VOID DATA

RAINTROL® ROOF DRAIN

ADJUSTABLE "FLOW RATE CONTROL" DESIGN FOR SLOPED ROOF CONSTRUCTION

WITH ADJUSTABLE TOP

FUNCTION: Used to control the flow of rain water off a roof. Trapezoidal weirs limit the flow to the leaders. The adjustable top permits adjustment to roof insulation thickness without disturbing the drain body or any existing or temporary roofing. Large clamping surface holds flashing and roof materials without puncturing.

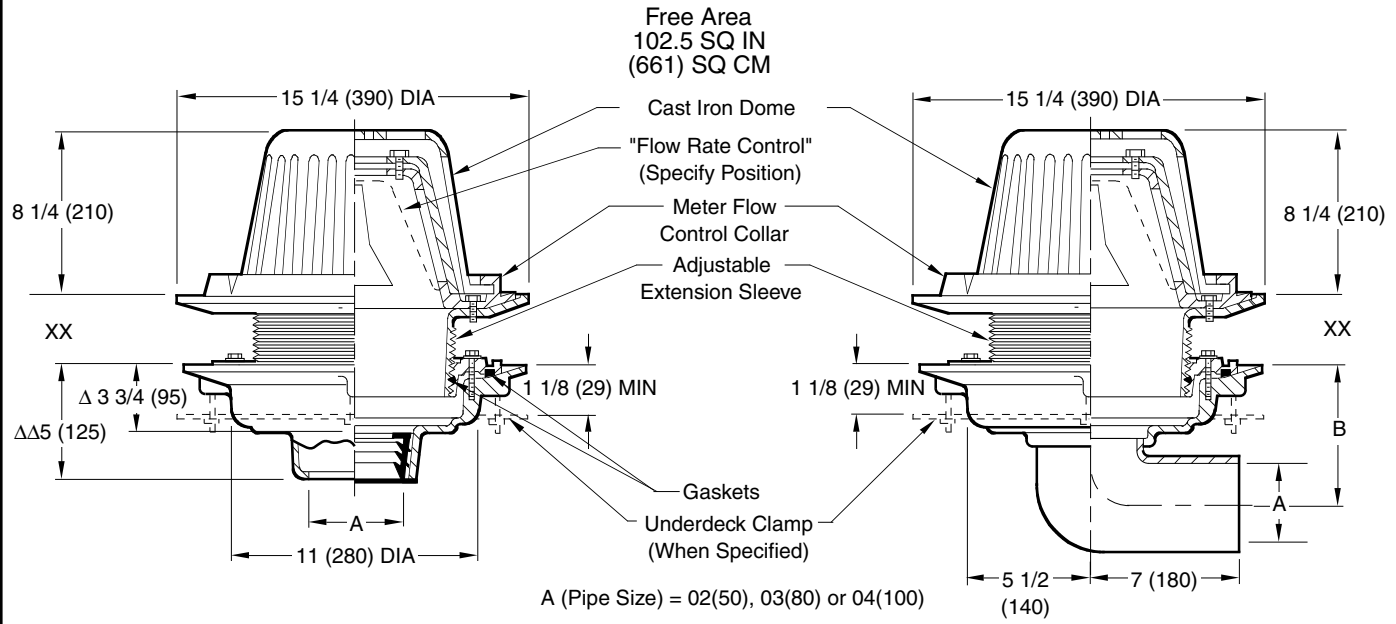


Fig. 1016C CAULK OUTLET
 Fig. 1016Y NO-HUB OUTLET

Fig. 1026S SPIGOT OUTLET
 Fig. 1026T THREADED OUTLET

XX	MIN	MAX
Low Position	1 1/4 (32)	2 1/2 (64)
High Position	2 1/4 (57)	4 (100)

recommended deck opening

with suffix -R	17 (430) DIA
less suffix -R	14 (355) DIA

A SIZE	02(50)	03(80)	04(100)
B	6(150)	6 1/2(165)	7 (180)

NOTE: Dimensions shown in parentheses are in millimeters.

Always specify number of weir openings

1	2	3	4	5	6
---	---	---	---	---	---

REGULARLY FURNISHED:
 Duco Cast Iron Body with Adjustable Extension Sleeve, Combined Flashing Clamp and Gravel Stop with Adjustable "Flow Rate Control" Assembly and Dome

- VARIATIONS:**
- Expansion Joint (Specify Fig. 1710)
 - "L" Shaped Underdeck Clamp -CL
 - L Speedi-Set Service Weight
 - LXH Speedi-Set Extra Heavy
 - NO-HUB Adaptor (Fig. 1026 only)
 - Non-Adjustable "Flow Rate Control" Assembly
 - Sump Receiver -R
 - Underdeck Clamp -C
 - T Threaded Outlet

- OPTIONAL MATERIALS:**
- Aluminum Dome -AD
 - Galvanized Cast Iron -G
 - Rough Bronze Dome -RBD

*This dimension to internal stop of Speedi-Set Gasket
 **Same for Caulk, NO-HUB and Speedi-Set, 3 3/4 (95) for Threaded

NOTE: Please contact the factory or your local Representative if more information on selection, sizing and placement of our "Raintrol" roof drains is required.

REV.	DATE	DESCRIPTION	BY	CKD. BY
C	6-5-06	Revised Dim	TBW	AM
B	5-15-95	Submittal Update	EMB	BS
A	10-6-87	Revised Artwork	EMB	TD

WEIGHT POUNDS	VOLUME CUBIC FEET
------------------	----------------------

FIGURE NUMBER
1016/1026