

GENERAL PURPOSE ROOF DRAINS

ROOF DRAIN WITH ADJUSTABLE EXTENSION

FUNCTION: Used in flat roofs of any construction. The adjustable extension sleeve permits adjustment from a minimum of 1 1/4" (32) to a maximum of 4" (100), easily accommodating up to 2 3/4" (70) of varying insulation thicknesses. The positive threading allows smooth perimeter movement and circumferential support of the top at any adjusted elevation. Large low profile dome provides sufficient free area for quick drainage of rainwater and protection against debris.

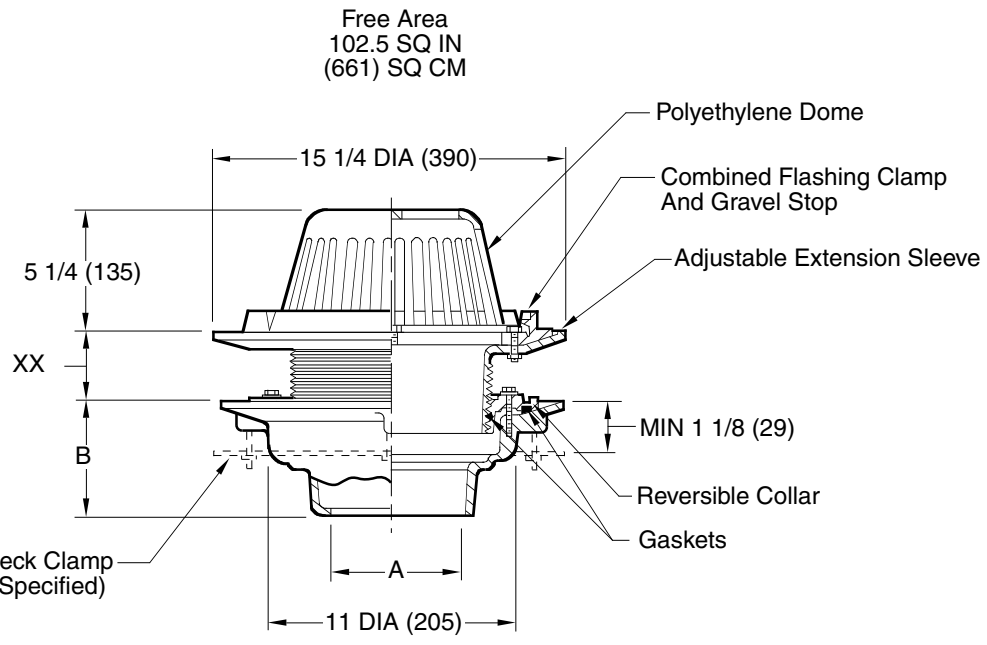


Fig. 1015C CAULK OUTLET
 Fig. 1015Y NO-HUB OUTLET

recommended deck opening

with suffix -R	17 (430) DIA
less suffix -R	14 (355) DIA

	XX	MIN	MAX
LOW POSITION	1 1/4 (32)	2 1/4 (57)	
HIGH POSITION	2 1/2 (64)		4 (100)

REGULARLY FURNISHED:
 Duco Cast Iron Body with Adjustable Extension Sleeve, Reversible Collar, Combined Flashing Clamp and Gravel Stop, with Polyethylene Dome.

- VARIATIONS:**
- Expansion Joint (Specify Fig. 1710)
 - "L" Shaped Underdeck Clamp -CL
 - Secondary Flashing Clamp -C2
 - Sump Receiver -R
 - Underdeck Clamp -C
 - Vandal Proof Dome -U
 - T Threaded Outlet

- OPTIONAL MATERIALS:**
- Aluminum Dome -AD
 - Cast Iron Dome -CID
 - Galvanized Cast Iron -G
 - Rough Bronze Dome -RBD

NOTE: Gasket located under reversible collar for 08" (200) size body is different gasket than used on 02" (50)-06" (150) bodies.

NOTE: Dimensions shown in parentheses are in millimeters.

DRAWING NUMBER S1015-08
 SIZE A
 SCALE: NONE
 DATE: 10-23-87
 APPROVED BY: BS
 CHECKED BY: TD
 DRAWN BY: EMB
1015-08"
 DIMENSIONS ARE SUBJECT TO MANUFACTURERS TOLERANCE AND CHANGE WITHOUT NOTICE

C	6-6-06	Revised Dim	TBW	AM	WEIGHT POUNDS	VOLUME CUBIC FEET	FIGURE NUMBER 1015-08"
B	5-15-95	Submittal Update	EMB	BS			
A	2-22-95	Revised and Redrawn	CMB	BS			
REV.	DATE	DESCRIPTION	BY	CKD. BY			