

FIXTURE SUPPORTS

FIG. 0700, 0700D LAVATORY SUPPORTS WITH CONCEALED ARMS FLOOR MOUNTED WITH "PRO-SET" UPRIGHTS FOR HIGH BACK LAVATORIES



FIXTURE SUPPORTS

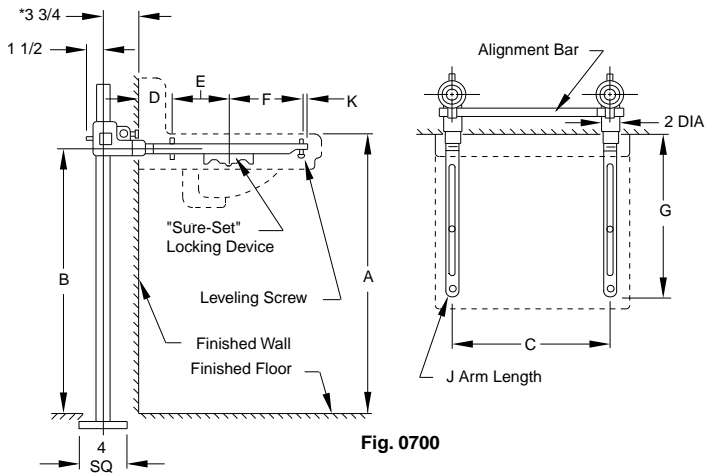


Fig. 0700

FIGURE NO.	DESCRIPTION	PRICE	APPROX. WT. LBS.
0700	Single Support	571.00	29
0700D	Back to Back Support	813.00	41

NOTE: *This dimension can be increased when fixture support is to be installed behind the wall. (Specify when required and wall thickness).

For lettered dimensions contact factory.

FIG. 0700-27, 0700-27-M31, 0700D-27-M31 LAVATORY SUPPORTS WITH CONCEALED ARMS FLOOR MOUNTED TYPE FOR FLAT SLAB LAVATORIES

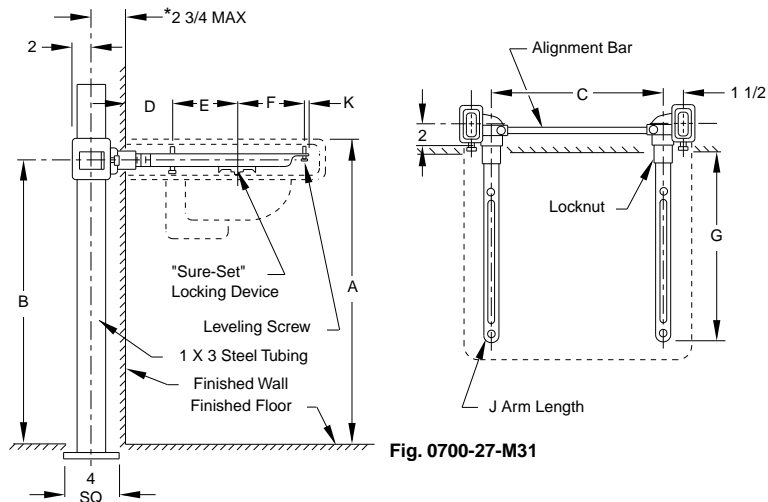


Fig. 0700-27-M31

FIGURE NO.	DESCRIPTION	PRICE	APPROX. WT. LBS.
0700-27	Single Support for Wheelchair Lavatories	609.00	34
0700-27-M31	Single Support for Wheelchair Lavatories with Heavy Duty Rectangular Uprights	609.00	34
0700D-27-M31	Double Support for Wheelchair Lavatories with Heavy Duty Rectangular Uprights	889.00	40

NOTE: *This dimension can be increased when fixture support is to be installed behind the wall. (Specify when required and wall thickness).

For lettered dimensions contact factory.

FIXTURE SUPPORTS

FIG. 0700E, 0700DE LAVATORY SUPPORTS WITH CONCEALED ARMS FLOOR MOUNTED TYPE FOR FLAT SLAB LAVATORIES

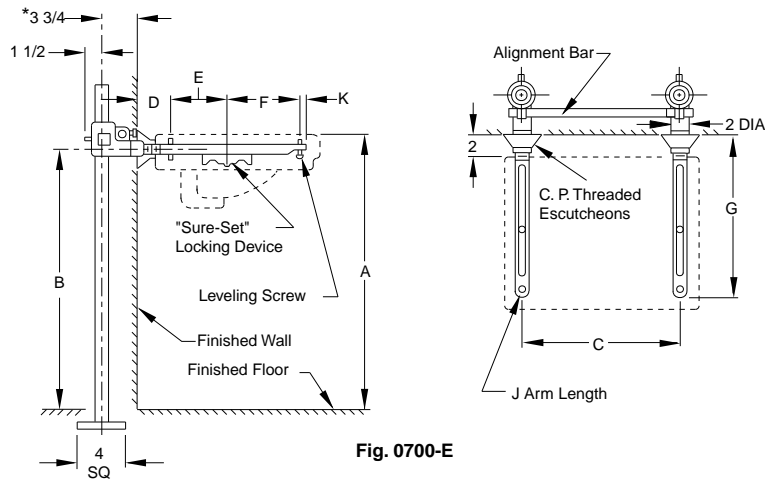


Fig. 0700-E

FIGURE NO.	DESCRIPTION	PRICE	APPROX. WT. LBS.
0700E	Single Support w/2" CP Escutcheons	666.00	30
0700DE	Back to Back Support w/2" CP Escutcheons	1,002.00	42

NOTE: *This dimension can be increased when fixture support is to be installed behind the wall. (Specify when required and wall thickness).

For lettered dimensions contact factory.

FIG. 0710, 0710D LABOR SAVER® LAVATORY SUPPORTS FLOOR MOUNTED TYPE FOR HIGH BACK LAVATORIES

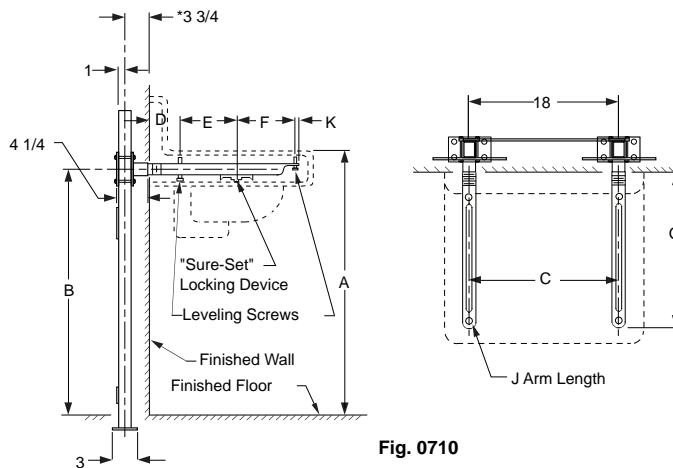


Fig. 0710

FIGURE NO.	DESCRIPTION	PRICE	APPROX. WT. LBS.
0710	Single Support	747.00	29
0710D	Back to Back Support	1,056.00	41

NOTE: *This dimension can be increased when fixture support is to be installed behind the wall. (Specify when required and wall thickness).

For lettered dimensions contact factory.

NOTE: Service weight regularly furnished on fittings above.
NOTE: Always specify fixture manufacturer's model name and number.

†REGULARLY FURNISHED

FIXTURE SUPPORTS

FIG. 0710-27, 0710D-27 LABOR SAVER® LAVATORY SUPPORTS FLOOR MOUNTED TYPE FOR FLAT SLAB LAVATORIES



FIXTURE SUPPORTS

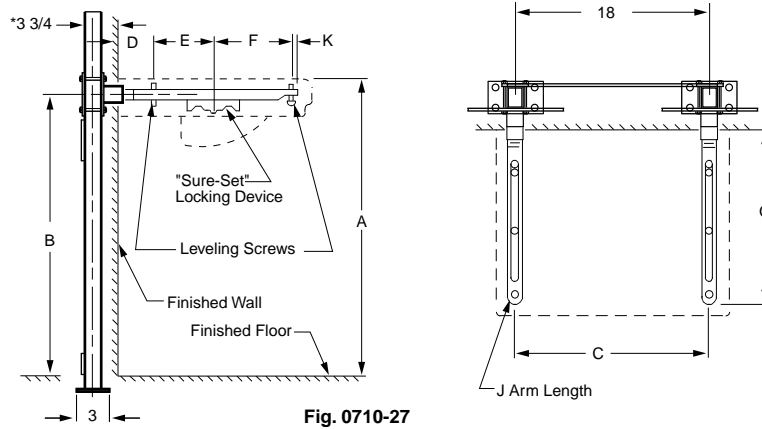


Fig. 0710-27

FIGURE NO.	DESCRIPTION	PRICE	APPROX. WT. LBS.
0710-27	Single Support for Wheelchair Lavatories	785.00	34
0710D-27	Double Support for Wheelchair Lavatories	1,132.00	42

NOTE: *This dimension can be increased when fixture support is to be installed behind the wall. (Specify when required and wall thickness).

For lettered dimensions contact factory.

FIG. 0710E, 0710DE LABOR SAVER® LAVATORY SUPPORTS FLOOR MOUNTED TYPE FOR FLAT SLAB LAVATORIES

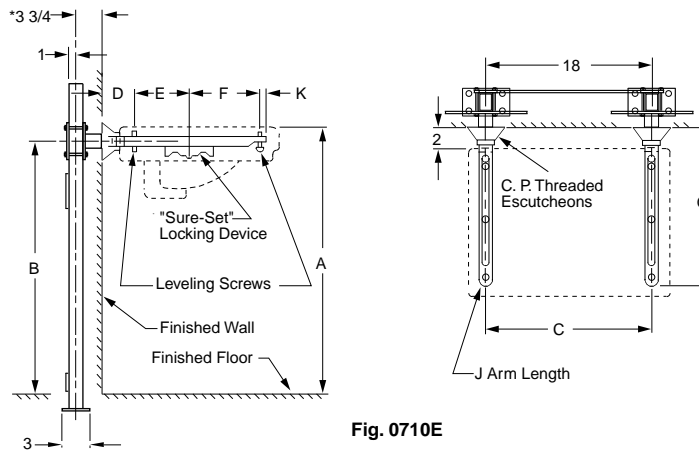


Fig. 0710E

FIGURE NO.	DESCRIPTION	PRICE	APPROX. WT. LBS.
0710E	Single Support w/2" CP Escutcheons	842.00	30
0710DE	Back to Back Support w/2" CP Escutcheons	1,245.00	42

NOTE: *This dimension can be increased when fixture support is to be installed behind the wall. (Specify when required and wall thickness).

For lettered dimensions contact factory.

NOTE: Service weight regularly furnished on fittings above.
NOTE: Always specify fixture manufacturer's model name and number.

†REGULARLY FURNISHED

FIXTURE SUPPORTS

FIG. 0720, 0722, 0723, 0727, 0728 LAVATORY SUPPORTS WALL MOUNTED TYPE FOR HIGH BACK LAVATORIES—SINGLE SUPPORT

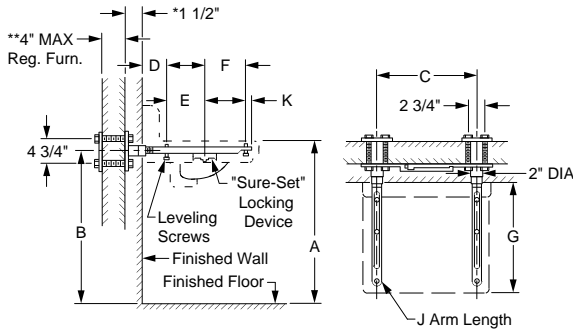


Fig. 0720

- * This dimension can be increased when required. (Specify thickness)
- **For greater wall thickness, longer supporting studs can be furnished (Specify wall thickness)

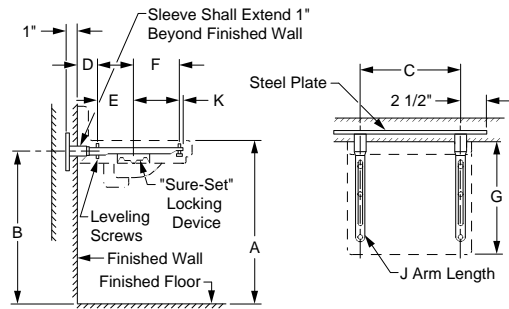


Fig. 0722

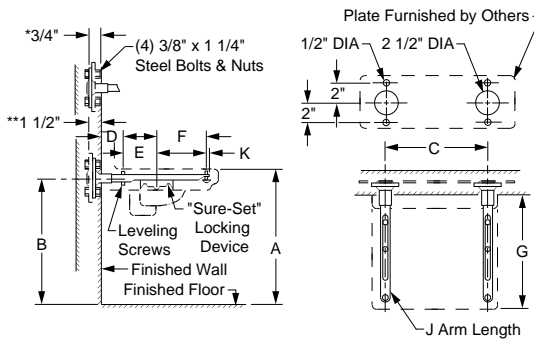


Fig. 0723

- * Arm support bracket shown bolted in back of wall plate for plaster wall construction.
- **Arm support bracket shown bolted in front of wall plate for tile wall construction.

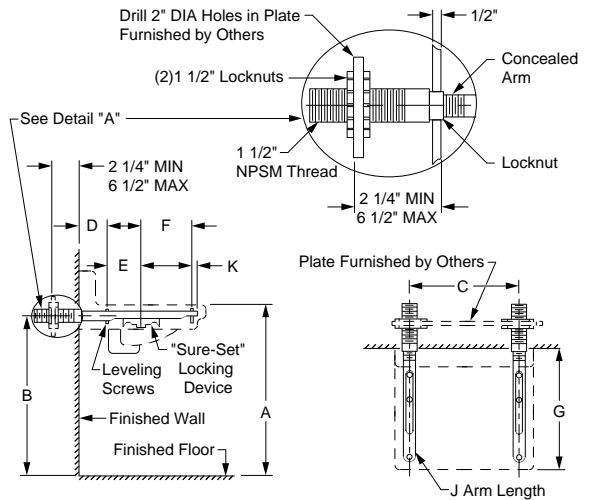


Fig. 0727

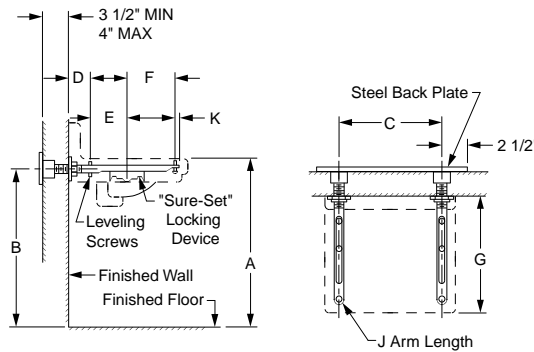


Fig. 0728

For lettered dimensions contact factory.

FIGURE NO.	DESCRIPTION	PRICE	APPROX. WT. LBS.
0720	Set on Masonry or Stud Wall	338.00	22
0722	Set on Steel Plate Secured in Wall	264.00	22
0723	To Attach to Backing Plate Secured in Wall	264.00	22
0727	Using Adjustable Extension	338.00	23
0728	Set on Steel Plate Secured to Glazed Block Wall	338.00	24

NOTE: Service weight regularly furnished on fittings above.
NOTE: Always specify fixture manufacturer's model name and number.

FIXTURE SUPPORTS

FIG. 0720E, 0722E, 0723E, 0727E, 0728E LAVATORY SUPPORTS WALL MOUNTED TYPE FOR FLAT SLAB LAVATORIES—SINGLE SUPPORT



FIXTURE SUPPORTS

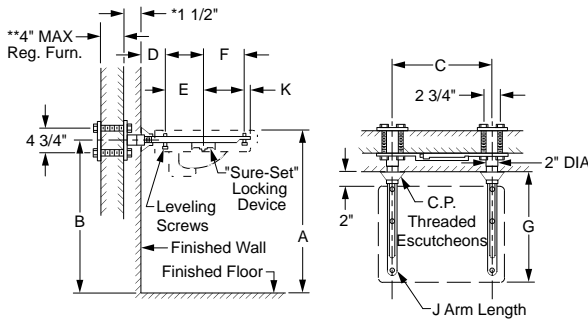


Fig. 0720E

* This dimension can be increased when required. (Specify thickness)
 **For greater wall thickness, longer supporting studs can be furnished. (Specify wall thickness)

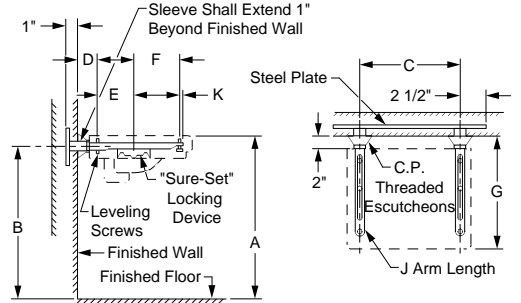


Fig. 0722E

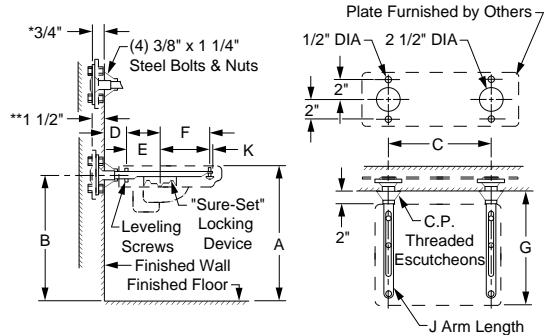


Fig. 0723E

* Arm support bracket shown bolted in back of wall plate for plaster wall construction.
 ** Arm support bracket shown bolted in front of wall plate for tile wall construction.

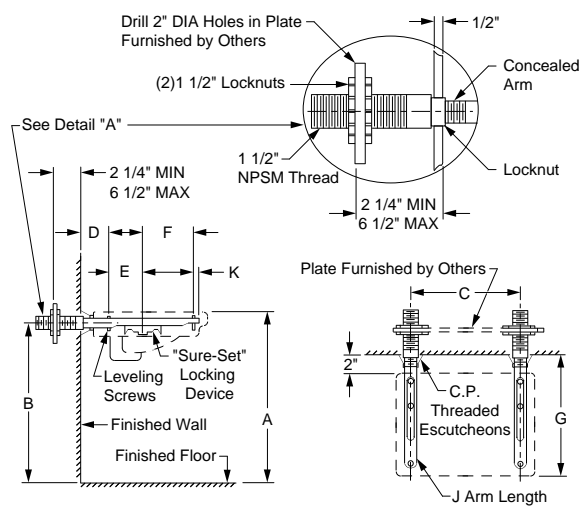


Fig. 0727E

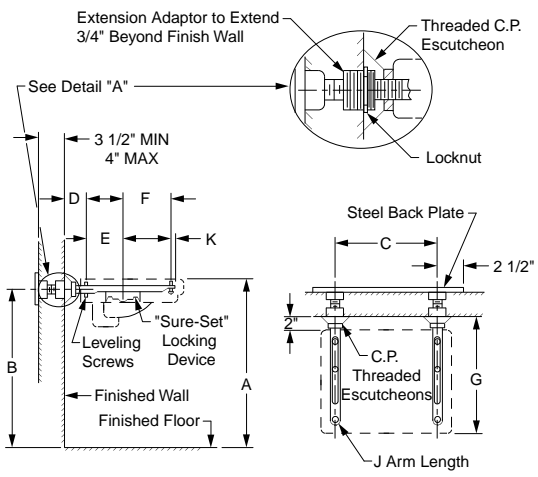


Fig. 0728E

For lettered dimensions contact factory.

FIGURE NO.	DESCRIPTION	PRICE	APPROX. WT. LBS.
0720E	Set on Masonry or Stud Wall	432.00	24
0722E	Set on Steel Plate Secured in Wall	359.00	24
0723E	To Attach to Backing Plate Sec'd in Wall	359.00	24
0727E	Using Adjustable Extension	433.00	25
0728E	Set on Steel Plate Secured to Glazed Block Wall	433.00	26

NOTE: Service weight regularly furnished on fittings above.
 NOTE: Always specify fixture manufacturer's model name and number.

FIXTURE SUPPORTS

FIG. 0750, 0750D LAVATORY SUPPORTS WITH ARC EXPOSED ARMS FLOOR MOUNTED TYPE FOR FLAT SLAB AND HIGH BACK LAVATORIES

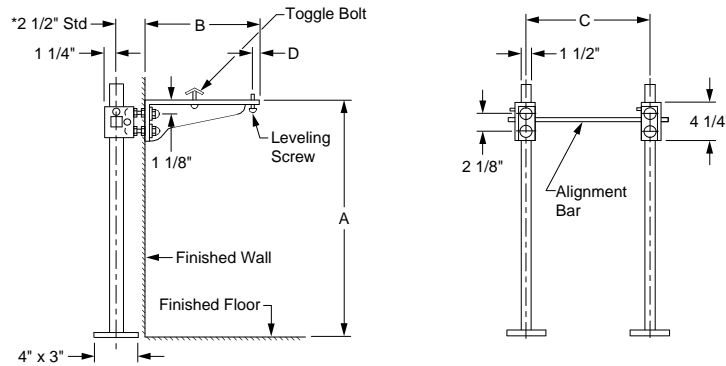


Fig. 0750

NOTE: *This dimension can be increased when fixture support is to be installed behind the wall. (Specify when required and wall thickness).

NOTE: For metal stud wall construction, specify Suffix -M31 rectangular steel upright with welded base for greater strength.

For lettered dimensions contact factory.

FIGURE NO.	DESCRIPTION	PRICE	APPROX. WT. LBS.
0750	Single Support	813.00	32
0750D	Back to Back Support	1,277.00	41

FIG. 0752, 0752D LAVATORY SUPPORTS WITH ARC EXPOSED ARMS FLOOR MOUNTED TYPE FOR HIGH BACK ENAMELED IRON LAVATORIES

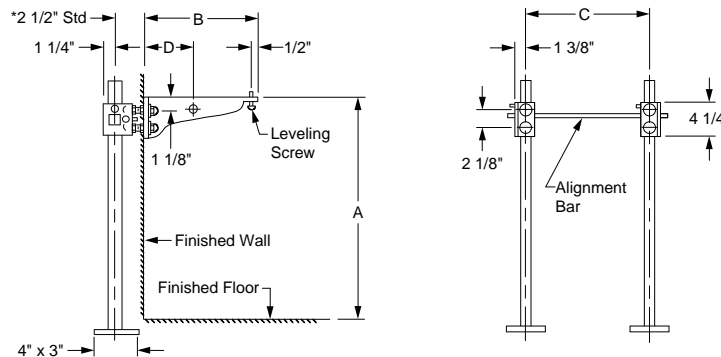


Fig. 0752

NOTE: *This dimension can be increased when fixture support is to be installed behind the wall. (Specify when required and wall thickness).

NOTE: For metal stud wall construction, specify Suffix -M31 rectangular steel upright with welded base for greater strength.

For lettered dimensions contact factory.

FIGURE NO.	DESCRIPTION	PRICE	APPROX. WT. LBS.
0752	Single Support for Wheelchair Lavatories	813.00	26
0752D	Single Support for Wheelchair Lavatories	1,277.00	33

NOTE: Service weight regularly furnished on fittings above.
NOTE: Always specify fixture manufacturer's model name and number.

FIXTURE SUPPORTS

FIG. 0760, 0760D LABOR SAVER® LAVATORY SUPPORTS WITH ARC EXPOSED ARMS FLOOR MOUNTED TYPE FOR FLAT SLAB AND HIGH BACK LAVATORIES

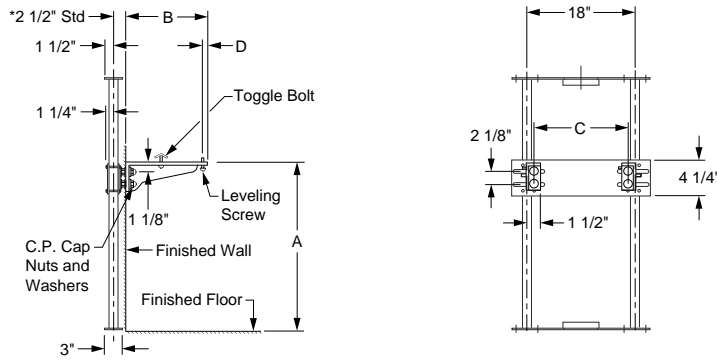


Fig. 0760

NOTE: *This dimension can be increased when fixture support is to be installed behind the wall. (Specify when required and wall thickness).

For lettered dimensions contact factory.

FIGURE NO.	DESCRIPTION	PRICE	APPROX. WT. LBS.
0760	Single Support	1,056.00	32
0760D	Back to Back Support	1,660.00	41

FIG. 0762, 0762D LABOR SAVER® LAVATORY SUPPORTS WITH ARC EXPOSED ARMS FLOOR MOUNTED TYPE FOR HIGH BACK ENAMELED IRON LAVATORIES

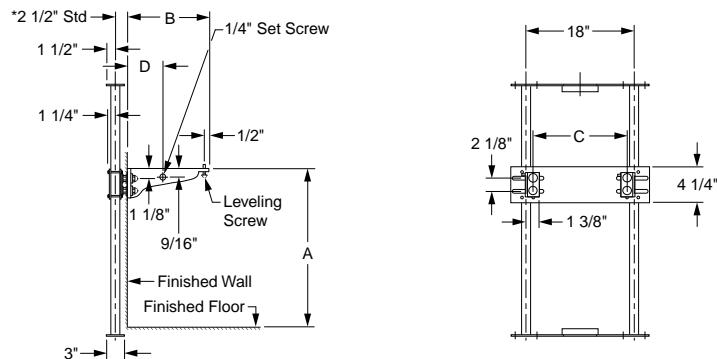


Fig. 0762

NOTE: *This dimension can be increased when fixture support is to be installed behind the wall. (Specify when required and wall thickness).

For lettered dimensions contact factory.

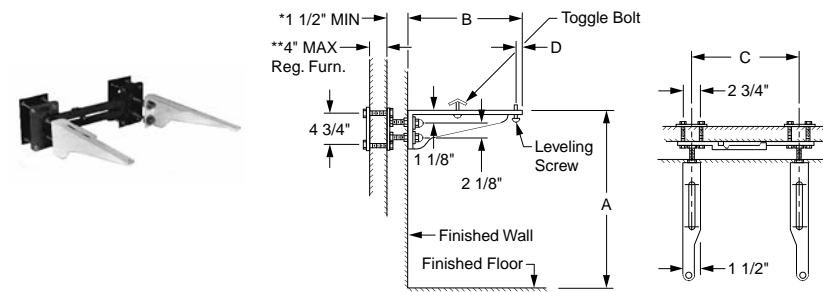
FIGURE NO.	DESCRIPTION	PRICE	APPROX. WT. LBS.
0762	Single Support for Wheelchair Lavatories	1,056.00	26
0762D	Double Support for Wheelchair Lavatories	1,660.00	33

NOTE: Service weight regularly furnished on fittings above.
NOTE: Always specify fixture manufacturer's model name and number.

FIXTURE SUPPORTS

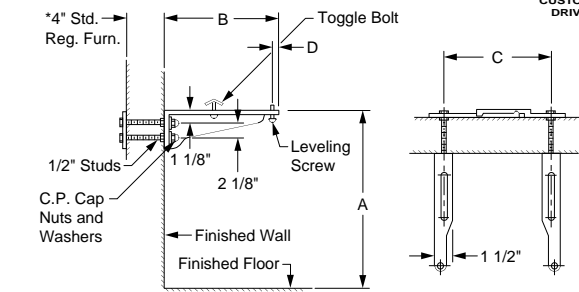


FIG. 0770, 0780, 0790, LAVATORY SUPPORTS WITH ARC EXPOSED ARMS WALL MOUNTED TYPE FOR FLAT SLAB AND HIGH BACK LAVATORIES



* This dimension can be increased when required (specify wall thickness).
 ** For greater wall thickness, longer support studs can be furnished (specify wall thickness).

Fig. 0770



* This dimension can be increased when required (specify wall thickness).

Fig. 0780

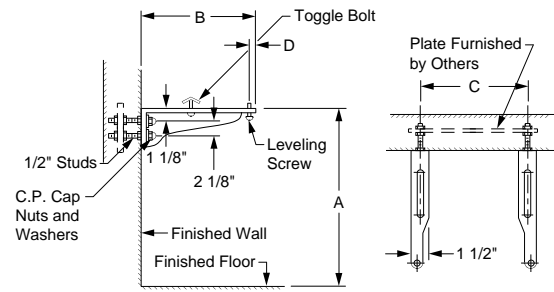
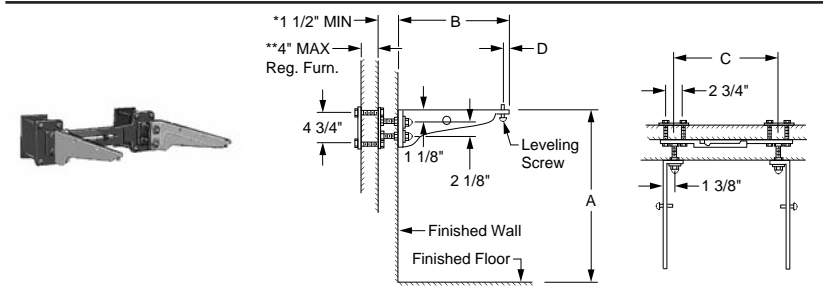


Fig. 0790

For lettered dimensions contact factory.

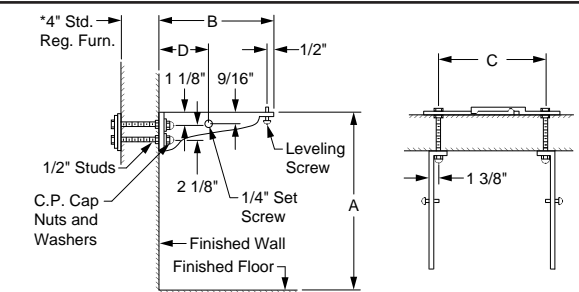
FIGURE NO.	DESCRIPTION	PRICE	APPROX. WT. LBS.
0770	Set on Masonry or Stud Wall	564.00	24
0780	Set on Glazed Block Wall	564.00	23
0790	To Attach to Backing Plate Secured in Wall	367.00	23

FIG. 0772, 0782, 0792 LAVATORY SUPPORTS WITH ARC EXPOSED ARMS FLOOR MOUNTED TYPE FOR HIGH BACK ENAMELED IRON LAVATORIES



* This dimension can be increased when required (specify wall thickness).
 ** For greater wall thickness, longer support studs can be furnished (specify wall thickness).

Fig. 0772



* This dimension can be increased when required (specify wall thickness).

Fig. 0782

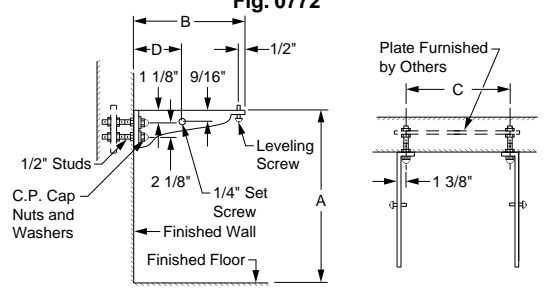
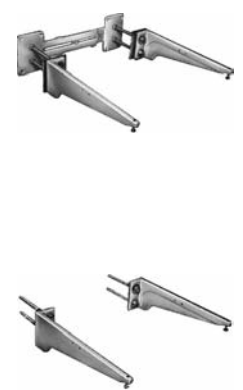


Fig. 0792

For lettered dimensions contact factory.

FIGURE NO.	DESCRIPTION	PRICE	APPROX. WT. LBS.
0772	Set on Masonry or Stud Wall	564.00	18
0782	Set on Glazed Block Wall	564.00	18
0792	To Attach to Backing Plate Secured in Wall	367.00	13

NOTE: Service weight regularly furnished on fittings above.
 NOTE: Always specify fixture manufacturer's model name and number.

FIXTURE SUPPORTS

FIG. 0800, 0805 LAVATORY SUPPORTS FLOOR MOUNTED TYPE SUPPORTS WITH SUPPORTING PLATE & HARDWARE



FIXTURE SUPPORTS

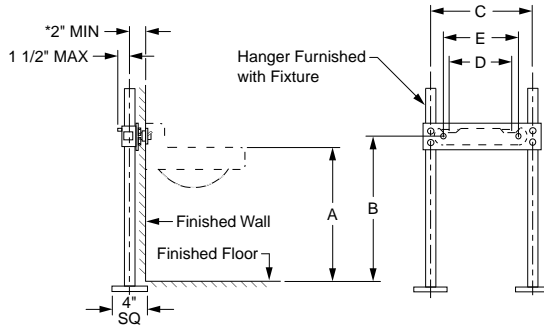


Fig. 0800

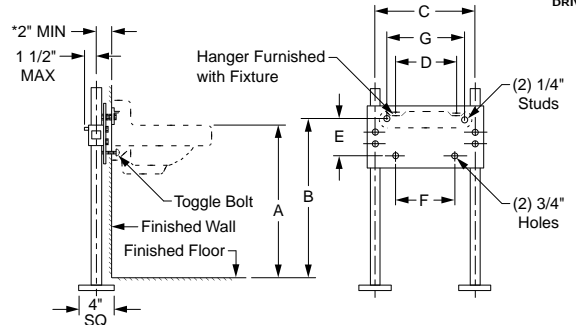


Fig. 0805

*This dimension can be increased when fixture support is to be installed behind the wall (specify when required and wall thickness).

NOTE: For metal stud wall construction, specify Suffix -M31 rectangular steel upright with welded base for greater strength.

For lettered dimensions contact factory.



FIGURE NO.	DESCRIPTION	PRICE	APPROX. WT. LBS.
0800	With Bar Hanger	433.00	26
0805	With Bar Hanger & Bottom Securing Lugs	POA	17

FIG. 0801, 0801D LABOR SAVER® LAVATORY SUPPORTS FLOOR MOUNTED TYPE SUPPORTS WITH SUPPORTING PLATE & HARDWARE

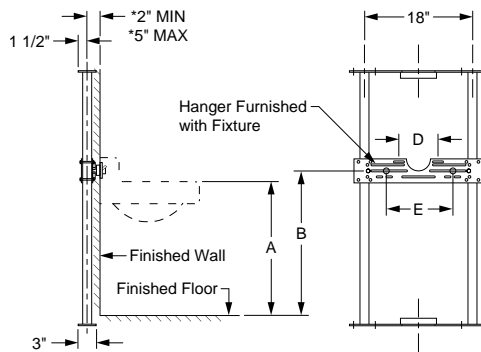


Fig. 0801

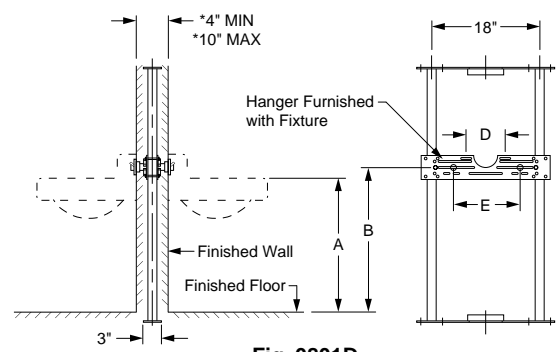


Fig. 0801D

*This dimension can be increased when fixture support is to be installed behind the wall (specify when required and wall thickness).

For lettered dimensions contact factory.

FIGURE NO.	DESCRIPTION	PRICE	APPROX. WT. LBS.
0801	Single-With Bar Hanger	562.00	26
0801D	Double-With Bar Hanger	747.00	35

NOTE: Service weight regularly furnished on fittings above.
NOTE: Always specify fixture manufacturer's model name and number.

†REGULARLY FURNISHED

FIXTURE SUPPORTS

FIG. 0823, 0824, 0830, 0834, 0844 LAVATORY & DRINKING FOUNTAIN SUPPORTS FLOOR MOUNTED TYPE WITH SUPPORTING PLATE AND STUDS

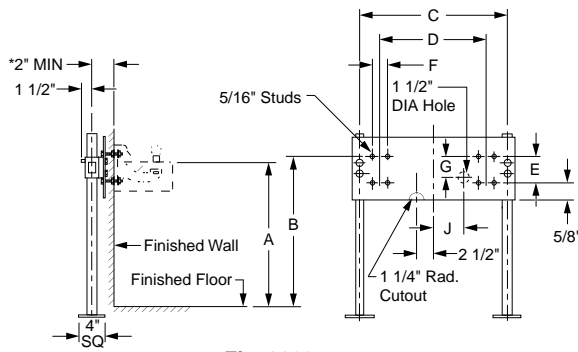


Fig. 0823

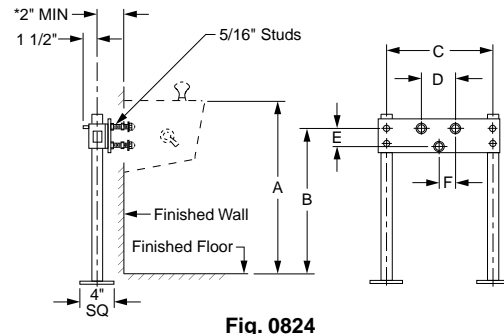


Fig. 0824

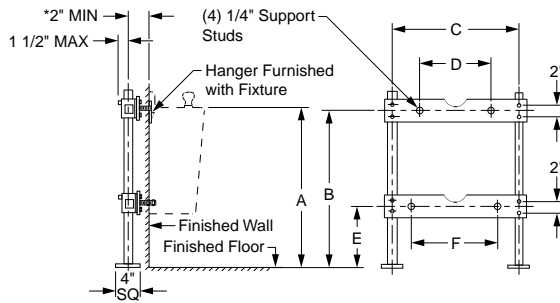


Fig. 0830

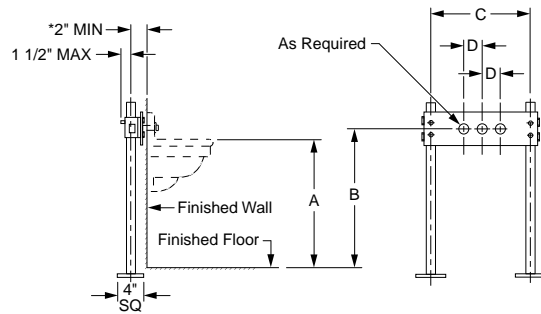


Fig. 0844

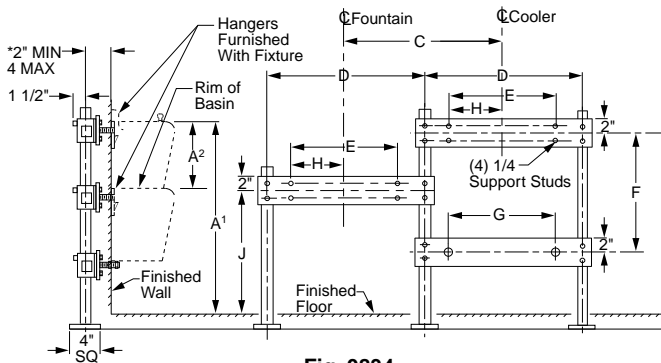


Fig. 0834

*This dimension can be increased when fixture support is to be installed behind the wall (specify when required and wall thickness).

NOTE: For metal stud wall construction, specify Suffix -M31 rectangular steel upright with welded base for greater strength. (0823, 0824, 0830 & 0844 only)

For lettered dimensions contact factory.

FIGURE NO.	DESCRIPTION	PRICE	APPROX. WT. LBS.
0823	For Multiple Drinking Fountains with Wall Brackets	POA	
0824	For Small Drinking Fountains with Integral Hangers	479.00	20
0830	For Electric Water Coolers	483.00	32
0834	For Electric Water Coolers	700.00	32
0844	For High Back Institutional Type Lavatories	436.00	32

FIXTURE SUPPORTS

FIG. 0825, 0826, 0827, 0828 LAVATORY & DRINKING FOUNTAIN SUPPORTS WALL MOUNTED TYPE WITH SUPPORTING PLATE AND STUDS



FIXTURE SUPPORTS

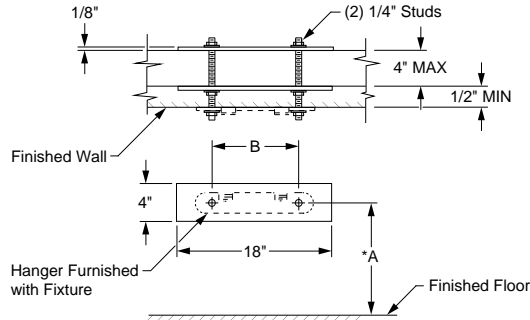


Fig. 0825

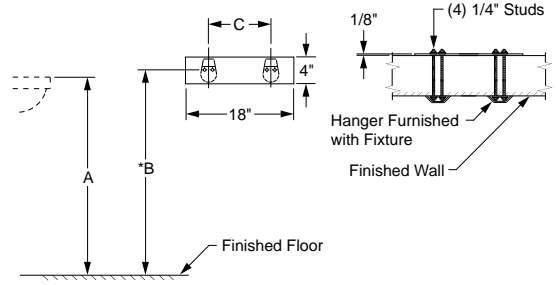


Fig. 0828

***NOTE:** This dimension is based on a rim to finish floor height of 31".

For lettered dimensions contact factory.

FIGURE NO.	DESCRIPTION	PRICE	APPROX. WT. LBS.
0825	For High Back Lavatories with Double Reinforced Plates	146.00	13
0826	For High Back Lavatories with Single Reinforced Plates	119.00	13
0827	For Washdown Urinals with Double Reinforced Plates	135.00	15
0828	For Washdown Urinals with Single Reinforced Plates	119.00	13

FIG. 0831 LABOR SAVER® LAVATORY AND SINK SUPPORTS WITH SUPPORTING PLATE AND STUDS

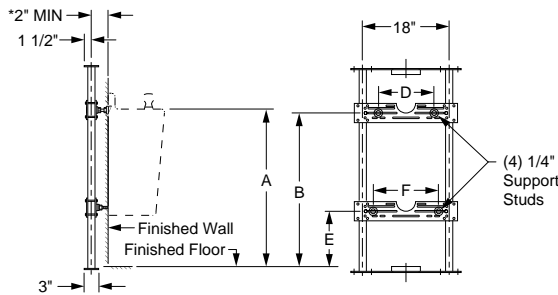


Fig. 0831

*This dimension can be increased when fixture support is to be installed behind the wall (specify when required and wall thickness).

For lettered dimensions contact factory.

FIGURE NO.	DESCRIPTION	PRICE	APPROX. WT. LBS.
0831	For Electric Water Coolers	628.00	32

FIXTURE SUPPORTS

FIG. 0870, 0870D HEAVY DUTY SINK SUPPORTS WITH ARC EXPOSED ARMS FLOOR MOUNTED TYPE

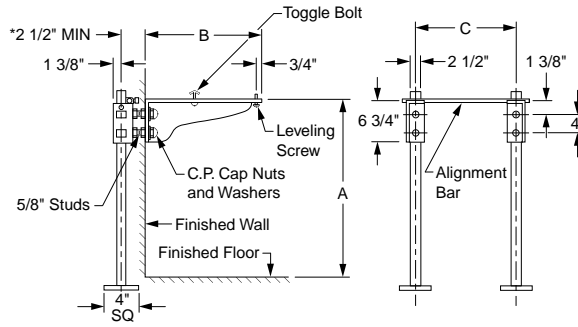


Fig. 0870

*This dimension can be increased when fixture support is to be installed behind the wall (specify when required and wall thickness).

NOTE: For metal stud wall construction, specify Suffix -M31 rectangular steel upright with welded base for greater strength.

For lettered dimensions contact factory.

FIGURE NO.	DESCRIPTION	PRICE	APPROX. WT. LBS.
0870	For Kitchen & Service Sinks-Single Support	909.00	42
0870D	For Kitchen & Service Sinks-Back to Back Support	1,465.00	70

FIG. 0871, 0871D, 0876 HEAVY DUTY SINK SUPPORTS WITH ARC EXPOSED ARMS FOR SINKS WITH CAST LUGS

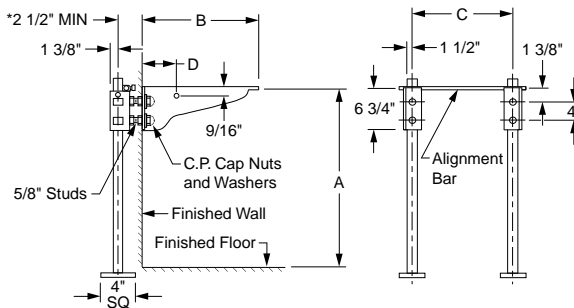


Fig. 0871

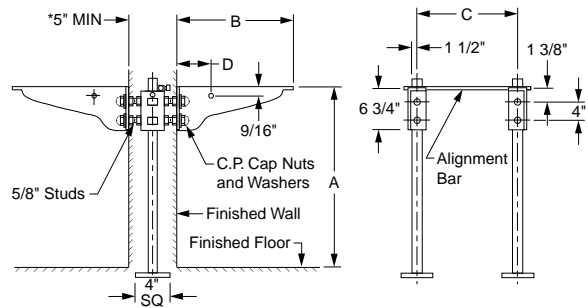


Fig. 0871D

*This dimension can be increased when fixture support is to be installed behind the wall (specify when required and wall thickness).

NOTE: For metal stud wall construction, specify Suffix -M31 rectangular steel upright with welded base for greater strength.

NOTE: For extra heavy duty support with 1 1/2\" pipe uprights, add Suffix "X" to Fig. No.

For lettered dimensions contact factory.

FIGURE NO.	DESCRIPTION	PRICE	APPROX. WT. LBS.
0871	For Enamel Iron Service Sinks-Single Support	909.00	23
0871D	For Enamel Iron Service Sinks-Back to Back Support	1,465.00	30
0876	For Perineal Bath	1,356.00	62

NOTE: Service weight regularly furnished on fittings above.

NOTE: Always specify fixture manufacturer's model name and number.

†REGULARLY FURNISHED

FIXTURE SUPPORTS

FIG. 0913, 0914, 0915, SERIES HEAVY DUTY SUPPORTS FOR SURGICAL SCRUB-UP AND FLUSHING RIM SINKS FLOOR MOUNTED TYPE



FIXTURE SUPPORTS

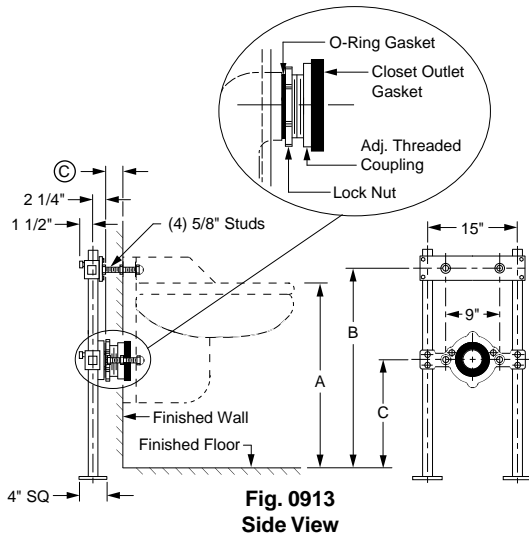


Fig. 0913 Side View

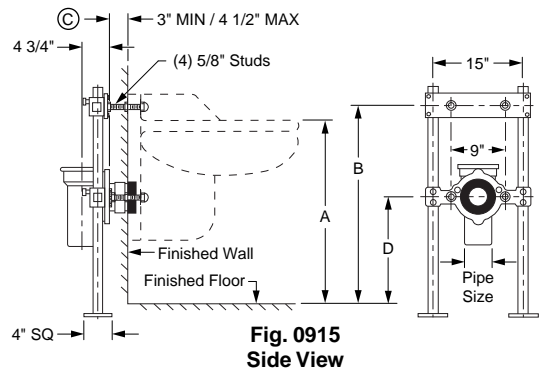


Fig. 0915 Side View

© This dimension can be increased when fixture support is to be installed behind the wall (specify when required and wall thickness).

For lettered dimensions contact factory.

FIGURE NO.	DESCRIPTION	PRICE	APPROX. WT. LBS.
0913	With Supporting Studs & Adjustable Coupling for 3" Back Outlet	689.00	49
0914	With Supporting Studs & Adjustable Coupling for 4" Back Outlet	689.00	48
0915	4" Caulk Fitting with 4" Vent	1,143.00	60
0915-1	4" Caulk Fitting with 2" Vent	1,143.00	64
0915Y2	3" No-Hub Fitting with 2" Vent	982.00	55
0915Y3	3" No-Hub Fitting with 3" Vent	982.00	57
0915Y4	4" No-Hub Fitting with 2" Vent	1,143.00	58
0915Y5	4" No-Hub Fitting with 4" Vent	1,143.00	58

The water closet gasket regularly furnished is made of molded neoprene and designed to fit water closet outlet dimensions and configurations shown in ANSI Standard A112.19.2M, Figure 13B. If gasket is not found to be compatible to fixture due to nonconformance of said fixture to ANSI A112.19.2M, then fixture manufacturer shall be consulted for a suitable gasket recommendation. Jay R. Smith assumes no liability for connections to fixtures which do not conform to these standards.

FIG. 0923, 0924, 0925, SERIES LABOR SAVER® HEAVY DUTY SUPPORTS FOR SURGICAL SCRUB-UP AND FLUSHING RIM SINKS FLOOR MOUNTED TYPE

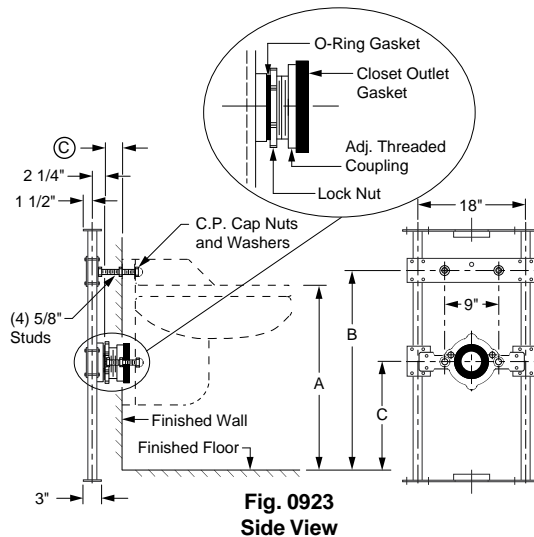


Fig. 0923 Side View

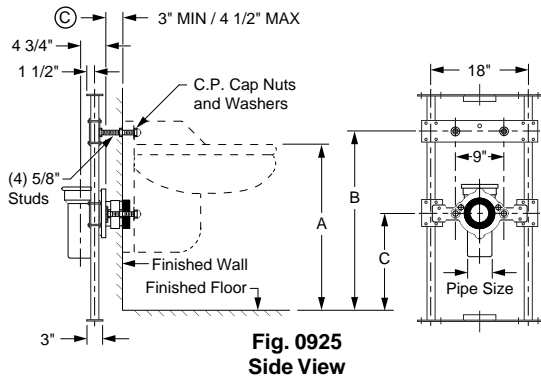


Fig. 0925 Side View

© This dimension can be increased when fixture support is to be installed behind the wall (specify when required and wall thickness).

For lettered dimensions contact factory.

FIGURE NO.	DESCRIPTION	PRICE	APPROX. WT. LBS.
0923	With Supporting Studs & Adjustable Coupling for 3" Back Outlet	898.00	49
0924	With Supporting Studs & Adjustable Coupling for 4" Back Outlet	898.00	48
0925	4" Caulk Fitting with 4" Vent	1,487.00	60
0925-1	4" Caulk Fitting with 2" Vent	1,487.00	64
0925Y2	3" No-Hub Fitting with 2" Vent	1,279.00	55
0925Y3	3" No-Hub Fitting with 3" Vent	1,279.00	57
0925Y4	4" No-Hub Fitting with 2" Vent	1,487.00	58
0925Y5	4" No-Hub Fitting with 4" Vent	1,487.00	58

The water closet gasket regularly furnished is made of molded neoprene and designed to fit water closet outlet dimensions and configurations shown in ANSI Standard A112.19.2M, Figure 13B. If gasket is not found to be compatible to fixture due to nonconformance of said fixture to ANSI A112.19.2M, then fixture manufacturer shall be consulted for a suitable gasket recommendation. Jay R. Smith assumes no liability for connections to fixtures which do not conform to these standards.

NOTE: Service weight regularly furnished on fittings above.
NOTE: Always specify fixture manufacturer's model name and number.

†REGULARLY FURNISHED