

# ULTRACEPT OIL/WATER SEPARATION SYSTEMS

## FIG. 8600 SERIES

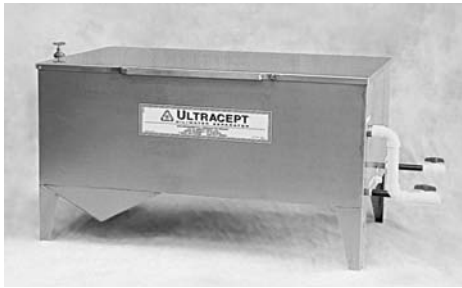
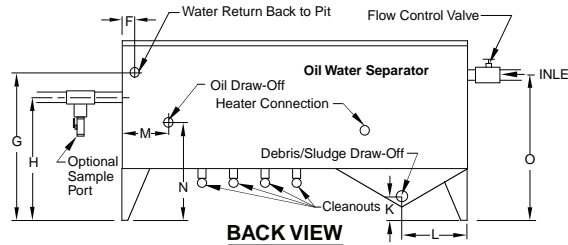
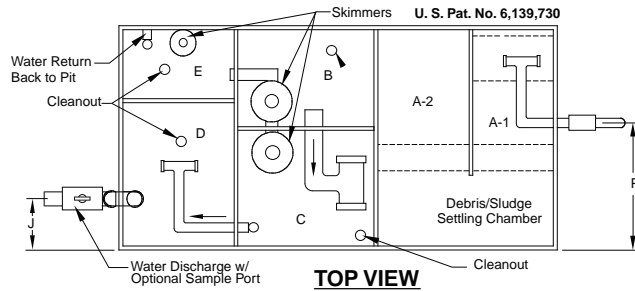


Figure No.	
8602-S	POA
8602-M	POA
8605-S	POA
8605-M	POA

Figure No.	
8610-S	POA
8610-M	POA
8625-S	POA
8625-M	POA
8645-S	POA
8645-M	POA



Model	Construction Material	Flow Rate GPM	Inlet	Outlet	Water Return	Sludge Draw-Off	Oil Outlet	Waste Oil Cap	Length	Width	Height	Weight	Water Volume
8602	S,M	2	1 1/2"	1 1/2"	1 1/2"	1 1/2"	1 1/2"	4 gal	36"	24"	36"	150 lbs	67 gal
8605	S,M	5	1 1/2"	1 1/2"	1 1/2"	1 1/2"	1 1/2"	12 gal	60"	36"	36"	600 lbs	168 gal

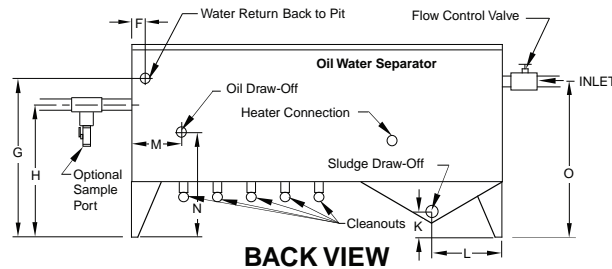
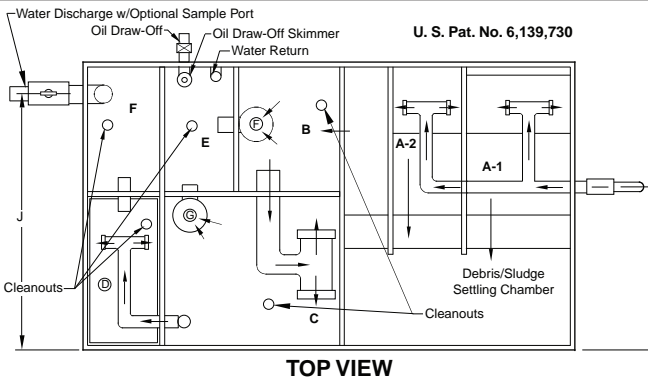
S = Stainless Steel M = Mild Steel

Model	F	G	H	J	K	L	M	N	O	P	Q
8602	4.00	31.00	28.5	10.00	12.00	6.32	8.00	24.56	34.25	21.00	12"
8605	5.125	25.7	25.7	2.5	4.47	12.07	12.00	16.7	33.32	18.00	45"

All Cleanouts and Water Return Lines are to be plumbed to a common 3" Line that goes back to Surge Pit. All external plumbing fittings are Sch. 40 PVC unless otherwise specified.

- A Inlet Compartment
- B Primary Skimming Compartment
- C Secondary Skimming Compartment
- D Final Polishing Compartment
- E Oil Collection Compartment
- F Water Return from Side
- G Water Return height from grade
- H Water Discharge height from grade
- J Water Discharge from side
- K Sludge draw-off height from grate
- L Sludge draw-off from side
- M Oil draw-off from side
- N Oil draw-off height from grate
- O Inlet height from grade
- P Inlet location from side
- Q Cubes (ft.)

NOTE: Ultracept® units exposed to freezing temperatures may require pipe insulation to be installed on exposed plumbing. Pipe insulation is by others.



Model	Construction Material	Flow Rate GPM	Inlet	Outlet	Water Return	Sludge Draw-Off	Oil Outlet	Waste Oil Cap	Length	Width	Height	Weight	Water Volume
8610	S,M	10	2"	3"	1 1/2"	3"	1 1/2"	23 gal	72"	36"	48"	925 lbs	400 gal
8625	S,M	25	2"	3"	1 1/2"	3"	1 1/2"	29 gal	84"	48"	48"	1175 lbs	628 gal
8645	S,M	45	2"	3"	1 1/2"	3"	1 1/2"	35 gal	96"	48"	48"	1395 lbs	718 gal

S = Stainless Steel M = Mild Steel

Model	F	G	H	J	K	L	M	N	O	P	Q
8610	18.07	35.82	33.7	29.88	6.00	12.07	21.875	28.82	43.69	18.00	72
8625	18.99	31.70	33.70	6.00	6.00	18.07	23.875	21.70	43.57	24.00	112
8645	26.875	36.00	33.88	42.12	6.15	18.07	32.31	29.00	43.88	24.00	128

NOTE: Ultracept® units exposed to freezing temperatures may require pipe insulation to be installed on exposed plumbing. Pipe insulation is by others.

- A Inlet Compartment
- B Primary Skimming Compartment
- C Secondary Skimming Compartment
- D Final Polishing Compartment
- E Oil Collection Compartment
- F Water Return from Side
- G Water Return height from grade
- H Water Discharge height from grade
- J Water Discharge from side
- K Sludge draw-off height from grate
- L Sludge draw-off from side
- M Oil draw-off from side
- N Oil draw-off height from grate
- O Inlet height from grade
- P Inlet location from side
- Q Cubes (ft.)

All Cleanouts and Water Return Lines are to be plumbed to a common 3" Line that goes back to Surge Pit. All external plumbing fittings are Sch. 40 PVC unless otherwise specified.

Industrial type facilities suffer from oily waste water problems from time to time. Federal and local regulations require that this waste water must be treated before it can be discharged into municipal sewers or subsurface waters.

The Ultracept Oil/ Water Separator by Jay R. Smith Mfg. Co. is designed to accomplish this task through a continuous skimming technique. The patented design uses the cohesive property of water and a multi-stage separation process to achieve high separation efficiency.

The Ultracept Oil/Water Separator is designed to be installed so that contaminated water is pumped from a surge pit into the Ultracept unit. The separator, having been filled with clean water prior to the startup,

then uses the surface tension of the clean water to promote and enhance waster separation. The water then travels through a series of chambers for gravity discharge to a sanitary sewer or to a recycling system.

### Features and Benefits:

- Available in stainless steel and epoxy coated steel
- Regularly furnished with a flow control valve and all required plumbing components
- Simple, above ground installation
- Low maintenance, no coalescing packs
- Meets discharge regulations
- All units come in either stainless steel (S) or Mild steel (M)
- All units have 1-1/2" water return and 1 1/2" oil outlet