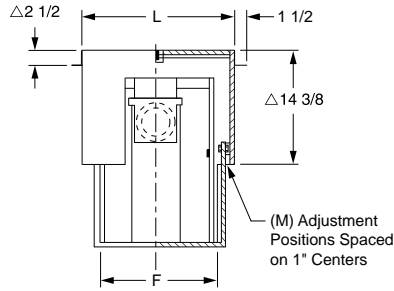


INTERCEPTORS

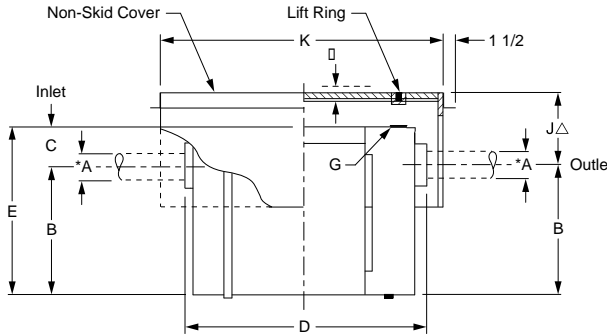
FIG. 8300 SERIES STEEL GREASE INTERCEPTORS WITH RECEIVING CRADLE



FUNCTION: The all steel receiving cradle provides positive support for the interceptor and vertical adjustability for the inlet and outlet connections to meet the drainage piping. The receiving cradle can be set in the slab at the time of pouring or set in a pre-sleeved opening in the rough slab. The cradle is secured and suspended in the rough slab by its anchoring flange. The interceptor is lowered into the receiving cradle and adjusted to the elevation of the drainage piping. Interceptor is readily accessible for cleaning and inspection simply by removing the cradle cover which sits flush with floor. The cradle supports the interceptor and has no provisions for waterproofing the interceptor in relation to the cradle and ceiling below.



Front View



Side View
Fig. 8335 Shown

OPTIONS:

- AC Aluminum Cover on Interceptor POA
- ACC Aluminum Cover on Cradle..... POA
- Y No-Hub Adaptor (2 req'd) See Fig. 2646Y

ADD

▲NOTE: When tile top is specified, add 1".
When Terrazzo top is specified, add 1 1/4".



Figs. 8007 thru 8050 carry the Plumbing and Drainage Institute Certification Seal Certifying conformance to Grease Interceptor Standard PDI-G101.

INTERCEPTORS

FIGURE NO.	GPM FLOW RATE	GREASE CAP. LBS.	INLET & OUTLET SIZE A	ROUGHING DIM			BODY		C.O. PLUG SIZE G	CRADLE DIM					†DUCO COAT INSIDE AND OUTSIDE	INTERC. ▲ w/ARC IN OR OUT -ARI	INTERC. ▲ w/ARC IN AND OUT -ARIO	ADD FOR:			
				B	C	D	E HEIGHT	F WIDTH		JΔ MIN	K MAX	L LENGTH	M WIDTH	▲ -ARC (CRADLE)				LIFT OUT BKT (-B)	DRIP PAN (-W)	APPROX. WT. LBS.	
8304	4	8	02"	7 3/4"	3 1/4"	16 3/4"	11"	10"	2"	6 3/4"	17 3/4"	27 1/4"	19 1/4"	12"	5,197.00	7,483.00	7,679.00	1,713.00	1,117.00	519.00	170
8307	7	14	02"	8 1/2"	3 1/2"	19"	12"	10 3/4"	2"	7"	17"	27 1/4"	19 1/4"	12"	6,337.00	8,667.00	8,870.00	1,713.00	1,117.00	635.00	180
8310	10	20	02"	9 1/2"	3 3/4"	21 1/4"	13 1/4"	13"	2"	7"	16"	27 1/4"	19 1/4"	12"	6,892.00	9,366.00	9,583.00	1,713.00	1,117.00	688.00	215
8315	15	30	02"	12"	3 1/2"	25"	15 1/2"	14"	2"	7 1/2"	18 1/2"	34 3/4"	22 3/4"	13"	8,440.00	11,107.00	11,394.00	1,713.00	1,117.00	811.00	270
8320	20	40	03"	13"	4"	28 1/2"	17"	15 3/4"	2"	7 1/2"	17 1/2"	34 3/4"	22 3/4"	13"	9,590.00	12,355.00	12,751.00	1,713.00	1,146.00	958.00	290
8325	25	50	03"	15 1/4"	4 1/2"	30"	19 3/4"	16 3/4"	2"	7 1/2"	19 1/2"	41 3/4"	28 1/4"	13"	10,292.00	13,196.00	13,663.00	2,474.00	1,210.00	1,029.00	320
*8335	35	70	03"	16"	5"	32 1/2"	21"	18 1/4"	2"	8 1/4"	18 3/4"	41 3/4"	28 1/4"	13"	11,753.00	14,887.00	15,423.00	2,474.00	1,295.00	1,353.00	345
*8350	50	100	03"	17 1/2"	6 3/4"	35 1/2"	24 1/4"	20 3/4"	2"	10 1/4"	17 1/4"	41 3/4"	28 1/4"	13"	14,149.00	18,258.00	18,974.00	2,474.00	1,936.00	1,413.00	410

*Available with one size larger inlet and outlet when specified. No charge.
 †Acid Resistant Coating on Interceptor only
 ▲ When Acid Resistant Coating on Cradle is needed, -ARC must also be specified.

REGULARLY FURNISHED: Steel Interceptor and Receiving Cradle with Gray Duco Coating Inside and Outside and Flow Control Fitting.