

B		JAY R. SMITH MFG. CO. DIVISION OF SMITH INDUSTRIES, INC. POST OFFICE BOX 3237 MONTGOMERY, ALABAMA 36109-0237 (USA) TEL: 334-277-8520 FAX: 334-272-7396	  		LOCATION
----------	---	---	---	--	-----------------

HEAVY DUTY SINK SUPPORTS

FLOOR MOUNTED WITH ACID RESISTANT COATED EXPOSED ARMS & "PRO-SET" UPRIGHTS

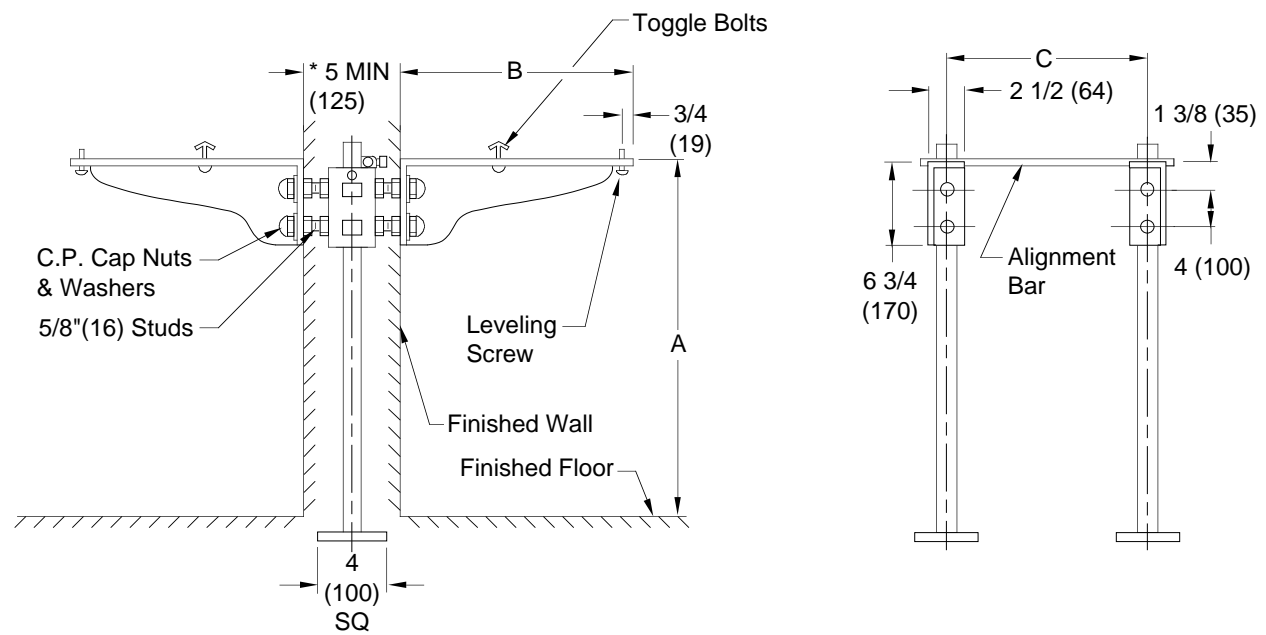
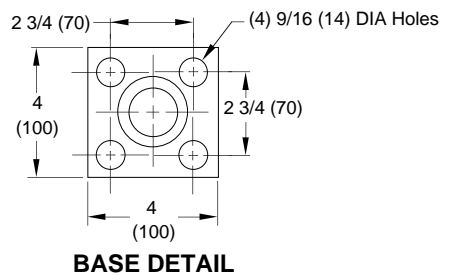


Fig. 0870D . . . FOR BACK TO BACK SUPPORT



ROUGHING-IN TABLE

FIXTURE NAME	NUMBER	SIZE	A	B	C

ΔThis dimension can be increased when fixture support is to be installed behind the wall (specify when required and wall thickness).
NOTE: The rough-in dimensions listed on this drawing are based on current information available to Jay R. Smith by the fixture manufacturers. We recommend that you verify these dimension with the fixture manufacturer. We will not accept responsibility for rough-in dimension changes by the fixture manufacturer.
NOTE: Dimensions shown in parenthesis are in millimeters.

0870D

DRAWING NUMBER
S0870D (B)

SIZE
A

SCALE:
NONE

DATE:
7-23-82

APPROVED BY:
TD

CHECKED BY:
JM

DRAWN BY:
KG

FIGURE NUMBER

B	4-24-95	Added millimeters	CMB	
A	8-18-93	Submittal Update	EMB	BS
REV.	DATE	DESCRIPTION	BY	CKD. BY

WEIGHT POUNDS	VOLUME CUBIC FEET

FIGURE NUMBER
0870D

DIMENSIONS ARE SUBJECT TO MANUFACTURERS TOLERANCE AND CHANGE WITHOUT NOTICE

WE CAN ASSUME NO RESPONSIBILITY FOR USE OF SUPERSEDED OR VOID DATA