

C



**JAY R. SMITH MFG. CO.**  
 DIVISION OF SMITH INDUSTRIES, INC.  
 POST OFFICE BOX 3237  
 MONTGOMERY, ALABAMA 36109-0237 (USA)  
 TEL: 334-277-8520 FAX: 334-272-7396 www.jrsmith.com



MEMBER OF:

LOCATION

# WALL MOUNTED REINFORCING PLATES

DRAWING NUMBER  
S0828

SIZE  
A

SCALE:  
NONE

DATE:  
1-14-75

APPROVED BY:

CHECKED BY:  
RS

DRAWN BY:  
RAS

WE CAN ASSUME NO RESPONSIBILITY FOR USE OF SUPERSEDED OR VOID DATA

DIMENSIONS ARE SUBJECT TO MANUFACTURERS TOLERANCE AND CHANGE WITHOUT NOTICE

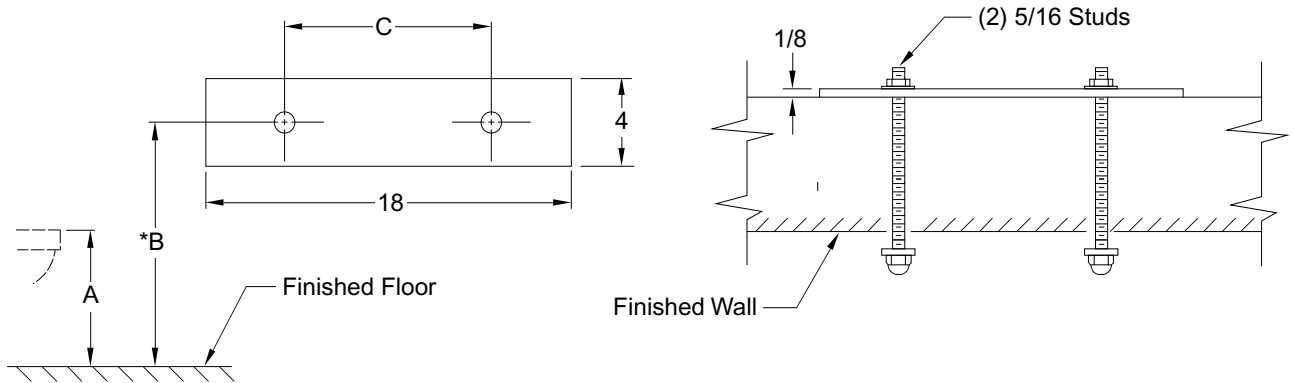


Fig. 0828 . . . FOR USE WITH STUD SUPPORTED URINALS

### ROUGHING-IN TABLE

FIXTURE MFG.	NAME	NUMBER	A	B	C
AM. STD.	ALLBROOK	6545.016	24	36 1/8	5
CRANE	EXPODIO	7-101, 3	22	26 1/2	5
CRANE	EXPEDIO	7-104	22	26 1/2	7
CRANE	MANHATTAN	7-105, 8	22	34 1/4	5
CRANE	SANTO	7-111, 2	22	34 1/4	5
U. RUNDLE	COLBY	4981, 2	22	33 1/4	5 1/4
U. RUNDLE	CELTIC	4989	22	42 1/2	7
U. RUNDLE	COLBURN	4990	22	33 1/2	4 1/2

**NOTE:** The rough-in dimensions listed on this drawing are based on current information available to Jay R. Smith by the fixture manufacturers. We recommend that you verify these dimensions with the fixture manufacturer. We will not accept responsibility for rough-in dimension changes by the fixture manufacturer.

**\*NOTE:** This dimension is based on a rim to finish floor height of 31".

**0828**

FIGURE NUMBER

C	11-28-94	Submittal Update	EMB	BS
REV.	DATE	DESCRIPTION	BY	CKD. BY

WEIGHT POUNDS	VOLUME CUBIC FEET

FIGURE NUMBER  
**0828**

E



**JAY R. SMITH MFG. CO.**  
 DIVISION OF SMITH INDUSTRIES, INC.  
 POST OFFICE BOX 3237  
 MONTGOMERY, ALABAMA 36109-0237 (USA)  
 TEL: 334-277-8520 FAX: 334-272-7396 www.jrsmith.com



MEMBER OF:

LOCATION

# URINAL SUPPORT

## WALL MOUNTED

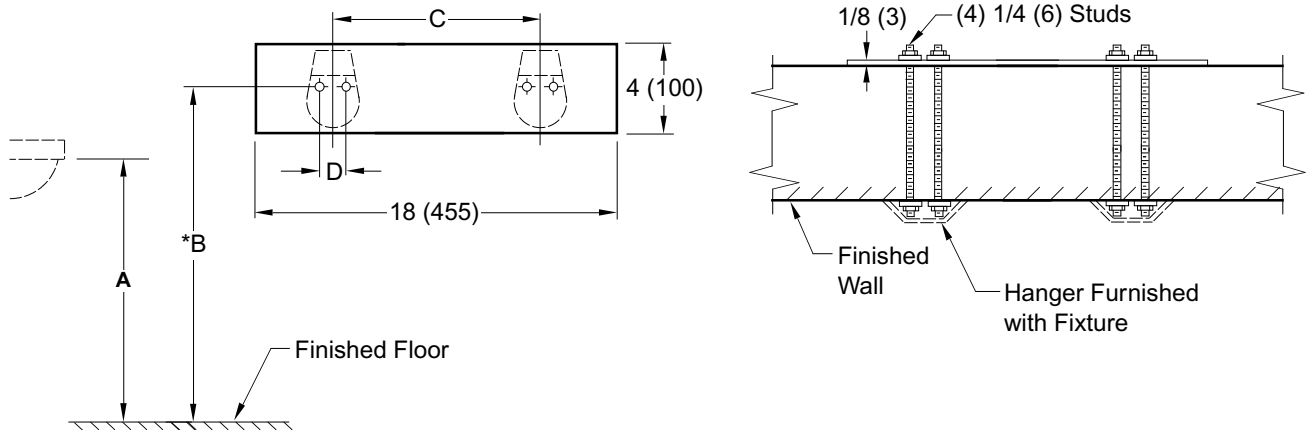


Fig. 0828. . . SINGLE REINFORCING PLATE FOR WASHDOWN URINALS WITH CONCEALED HANGER.

\*NOTE: This dimension is based on a rim to finish floor height of 31" (785).

### ROUGHING-IN TABLE

FIXTURE NAME	NUMBER	SIZE	A	B	C	D

#### REGULARLY FURNISHED:

(2) 1/4" (6) x 6" (150) Long Studs, (4) 1/4" (6) Hex Nuts, and (4) 1/4" (6) Steel Washers.

NOTE: The rough-in dimensions listed on this drawing are based on current information available to Jay R. Smith by the fixture manufacturers. We recommend that you verify these dimensions with the fixture manufacturer. We will not accept responsibility for rough-in dimension changes by the fixture manufacturer.

NOTE: Dimensions shown in parenthesis are in millimeters.

DRAWING NUMBER  
S0828 (-CH) (B)SIZE  
ASCALE:  
NONEDATE:  
1-14-75

APPROVED BY:

CHECKED BY:  
RSDRAWN BY:  
RASWE CAN ASSUME NO RESPONSIBILITY FOR USE OF SUPERSEDED OR VOID DATA  
DIMENSIONS ARE SUBJECT TO MANUFACTURERS TOLERANCE AND CHANGE WITHOUT NOTICE

0828

FIGURE NUMBER

E  
D4-3-97  
8-17-93Added Millimeters  
Submittal UpdateEMB  
EMBBS  
BSWEIGHT  
POUNDSVOLUME  
CUBIC FEET

FIGURE NUMBER

0828

REV.

DATE

DESCRIPTION

BY

CKD. BY