

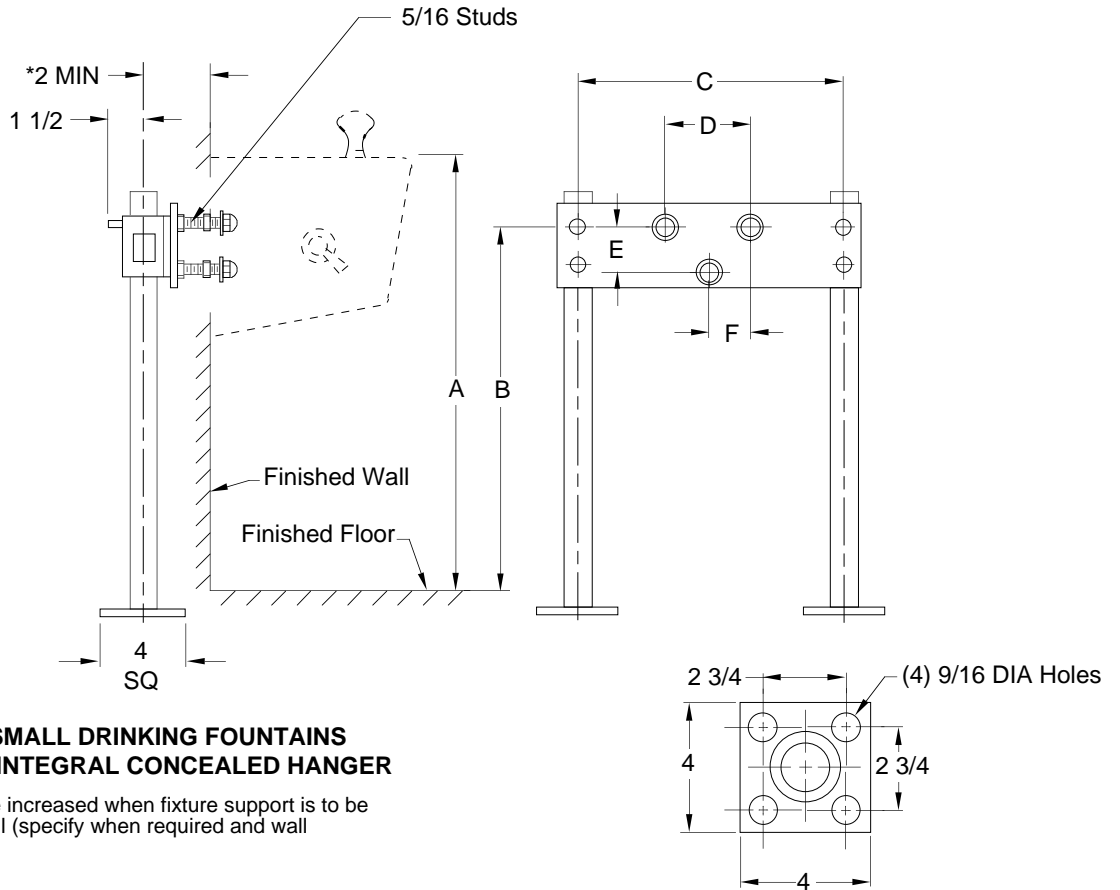


**JAY R. SMITH MFG. CO.**  
 DIVISION OF SMITH INDUSTRIES, INC.  
 POST OFFICE BOX 3237  
 MONTGOMERY, ALABAMA 36109-0237 (USA)  
 TEL: 334-277-8520 FAX: 334-272-7396



LOCATION

# DRINKING FOUNTAIN SUPPORT



**Fig. 0824 . . . FOR SMALL DRINKING FOUNTAINS WITH INTEGRAL CONCEALED HANGER**

\*This dimension can be increased when fixture support is to be installed behind the wall (specify when required and wall thickness).

### ROUGHING-IN TABLE

FIXTURE NAME		NUMBER		SIZE	
A	B	C	D	E	F

### BASE DETAIL

NOTE: The rough-in dimensions listed on this drawing are based on current information available to Jay R. Smith by the fixture manufacturers. We recommend that you verify these dimensions with the fixture manufacturer. We will not accept responsibility for rough-in dimension changes by the fixture manufacturer.

DRAWING NUMBER: S0824 (B)  
 SIZE: A  
 SCALE: NONE  
 DATE: 9-10-85  
 APPROVED BY: SJM  
 CHECKED BY: JD  
 DRAWN BY: JD  
 FIGURE NUMBER: 0824  
 DIMENSIONS ARE SUBJECT TO MANUFACTURERS TOLERANCE AND CHANGE WITHOUT NOTICE  
 WE CAN ASSUME NO RESPONSIBILITY FOR USE OF SUPERSEDED OR VOID DATA

REV.	DATE	DESCRIPTION	BY	CKD. BY
A	8-17-93	Submittal Update	EMB	

WEIGHT POUNDS	VOLUME CUBIC FEET
---------------	-------------------

**FIGURE NUMBER**  
**0824**