

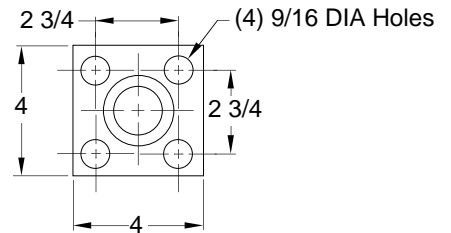
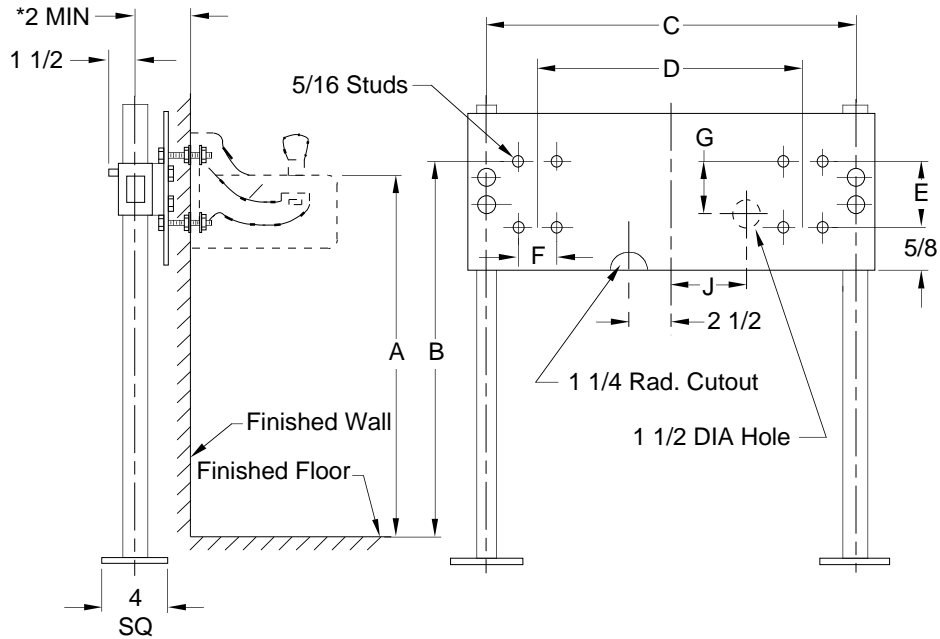


JAY R. SMITH MFG. CO.
 DIVISION OF SMITH INDUSTRIES, INC.
 POST OFFICE BOX 3237
 MONTGOMERY, ALABAMA 36109-0237 (USA)
 TEL: 334-277-8520 FAX: 334-272-7396



LOCATION

DRINKING FOUNTAIN SUPPORT



BASE DETAIL

Fig. 0823 . . . FOR MULTIPLE DRINKING FOUNTAINS WITH CONCEALED WALL BRACKETS

*This dimension can be increased when fixture support is to be installed behind the wall (specify when required and wall thickness).

NOTE: For metal stud wall construction, specify Suffix -M31 rectangular steel upright with welded bases for greater strength.

ROUGHING-IN TABLE

| FIXTURE NAME | | NUMBER | | SIZE | | | |
|--------------|---|--------|---|------|---|---|---|
| A | B | C | D | E | F | G | J |
| | | | | | | | |

NOTE: The rough-in dimensions listed on this drawing are based on current information available to Jay R. Smith by the fixture manufacturers. We recommend that you verify these dimensions with the fixture manufacturer. We will not accept responsibility for rough-in dimension changes by the fixture manufacturer.

DRAWING NUMBER
S0823 (B)

SIZE
A

SCALE:
NONE

DATE:
7-1-63

APPROVED BY:

CHECKED BY:
JL

DRAWN BY:
SL

0823

FIGURE NUMBER

WE CAN ASSUME NO RESPONSIBILITY FOR USE OF SUPERSEDED OR VOID DATA

DIMENSIONS ARE SUBJECT TO MANUFACTURERS TOLERANCE AND CHANGE WITHOUT NOTICE

| | | | | |
|----------|----------------|-------------------------|------------|---------|
| A | 8-17-93 | Submittal Update | EMB | |
| REV. | DATE | DESCRIPTION | BY | CKD. BY |

| | |
|---------------|-------------------|
| WEIGHT POUNDS | VOLUME CUBIC FEET |
| | |

| |
|----------------------|
| FIGURE NUMBER |
| 0823 |