

C



JAY R. SMITH MFG. CO.
 DIVISION OF SMITH INDUSTRIES, INC.
 POST OFFICE BOX 3237
 MONTGOMERY, ALABAMA 36109-0237 (USA)
 TEL: 334-277-8520 FAX: 334-272-7396 www.jrsmith.com



LOCATION

LABOR SAVER™ LAVATORY SUPPORTS WITH PORCELAIN ENAMELED OFFSET ARMS

FOR HIGH BACK ENAMELED IRON LAVATORIES WITH LUG UNDER RIM

DRAWING NUMBER
S0762 (-M30) (B)

SIZE
A

SCALE:
NONE

DATE:
07/12/01

APPROVED BY:
AM

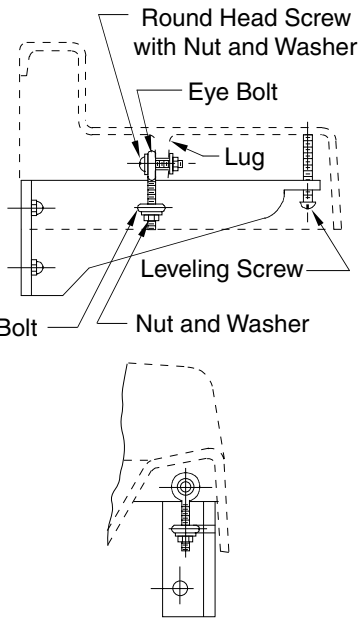
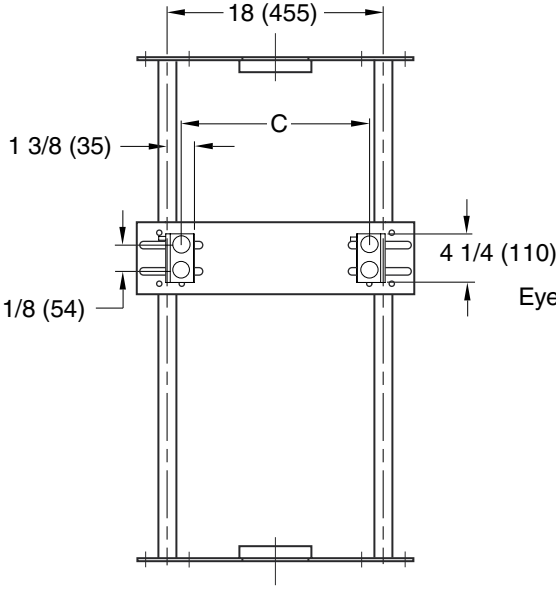
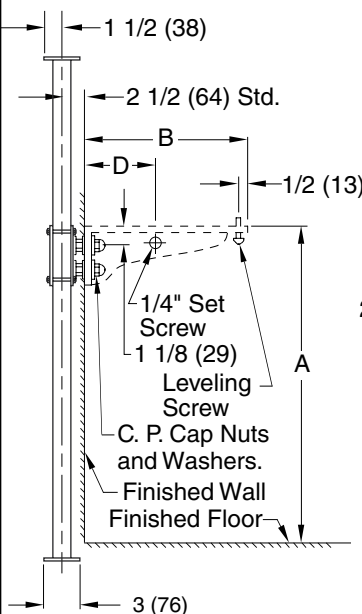
CHECKED BY:
CR

DRAWN BY:
JJ

0762 (-M30)

WE CAN ASSUME NO RESPONSIBILITY FOR USE OF SUPERSEDED OR VOID DATA

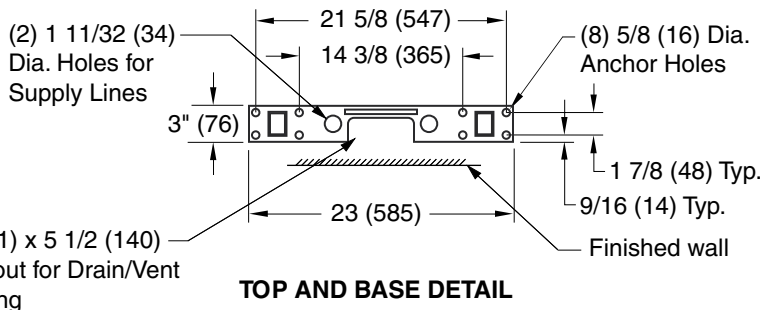
DIMENSIONS ARE SUBJECT TO MANUFACTURERS TOLERANCE AND CHANGE WITHOUT NOTICE



NOTE: The rough-in dimensions listed on this drawing are based on current information available to Jay R. Smith by the fixture manufacturers. We recommend that you verify these dimensions with the fixture manufacturer. We will not accept responsibility for rough-in dimension changes by the fixture manufacturer.

(-M30) Finished Trim to be Furnished with Each Support

- (4) 1/4" Eye Bolts x 2 1/2" Long
- (2) 1/4" x 1 1/2 Round Head Screws
- (4) 1/4 Nuts
- (6) 1/4 Washers
- (2) 1/4 x 2 1/2 Long Round Head Screws



NOTE: Dimensions shown in parentheses are in millimeters.

NOTE: *This dimension includes a wall thickness of 1/2". For greater wall thickness, specify centerline of upright to finished wall dimension.

ROUGH-IN TABLE

FIXTURE MFG.	NAME	NUMBER	SIZE	A	B	C	D

REV.	DATE	DESCRIPTION	BY	CKD. BY
C	12/09/02	Revised per George Flegel Changed Hole Size in Base Inside wall (washer/nut/washer)	JJ	AM
B	12/19/01		JJ	AM
A	11/06/01		JJ	AM

WEIGHT POUNDS	VOLUME CUBIC FEET

FIGURE NUMBER
0762 (-M30)