



JAY R. SMITH MFG. CO.
 DIVISION OF SMITH INDUSTRIES, INC.
 POST OFFICE BOX 3237
 MONTGOMERY, ALABAMA 36109-0237 (USA)
 TEL: 334-277-8520 FAX: 334-272-7396 www.jrsmith.com



MEMBER OF:

LOCATION

LAVATORY SUPPORTS WITH CONCEALED ARMS

WALL MOUNTED

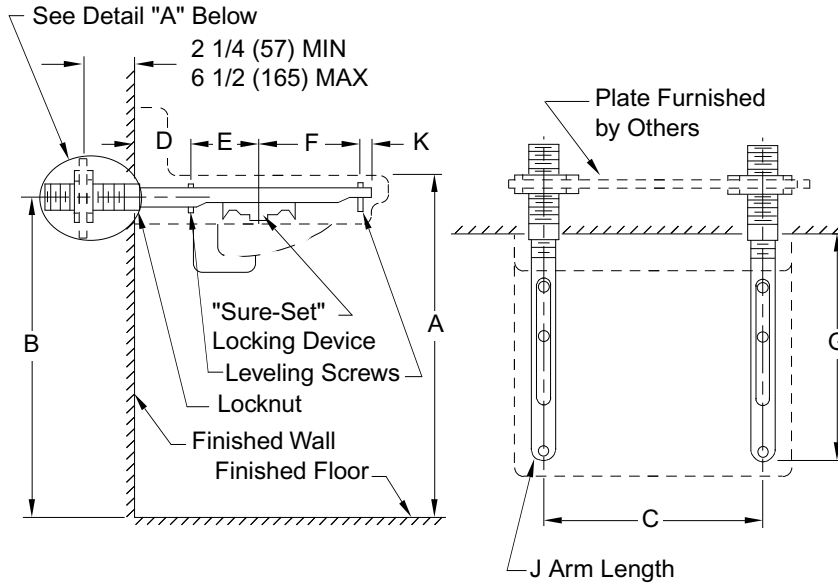
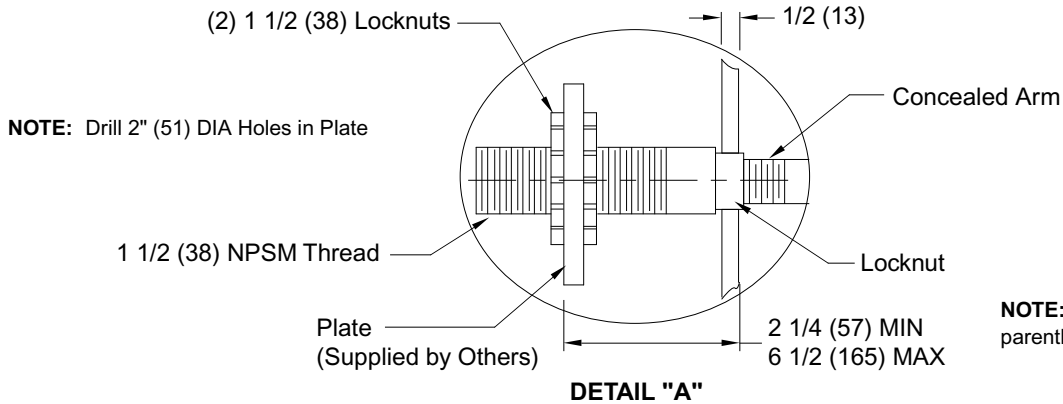


Fig. 0727 ... FOR HIGH BACK LAVATORIES USING ADJUSTABLE EXTENSION



NOTE: Dimensions shown in parentheses are in millimeters.

ROUGHING-IN TABLE

FIXTURE NAME		NUMBER		SIZE				
A	B	C	D	E	F	G	J	K

NOTE: The rough-in dimensions listed on this drawing are based on current information available to Jay R. Smith by the fixture manufacturers. We recommend that you verify these dimensions with the fixture manufacturer. We will not accept responsibility for rough-in dimension changes by the fixture manufacturer.

B
 DRAWING NUMBER **S0727 (B)**
 SIZE **A**
 SCALE: **NONE**
 DATE: **4-3-80**
 APPROVED BY:
 CHECKED BY: **TD**
 DRAWN BY: **CR**
0727
 FIGURE NUMBER

WE CAN ASSUME NO RESPONSIBILITY FOR USE OF SUPERSEDED OR VOID DATA
 DIMENSIONS ARE SUBJECT TO MANUFACTURERS TOLERANCE AND CHANGE WITHOUT NOTICE

REV.	DATE	DESCRIPTION	BY	CKD. BY	WEIGHT POUNDS	VOLUME CUBIC FEET	FIGURE NUMBER
B A	4-2-97 8-10-93	Added Millimeters Submittal Update	EMB EMB	BS			0727