



JAY R. SMITH MFG. CO.
 DIVISION OF SMITH INDUSTRIES, INC.
 POST OFFICE BOX 3237
 MONTGOMERY, ALABAMA 36109-0237 (USA)
 TEL: 334-277-8520 FAX: 334-272-7396 www.JRSmith.com



LOCATION

F

DRAWING NUMBER
I-2-133

SIZE
A

SCALE:
NONE

DATE:
9-23-86

APPROVED BY:
BS

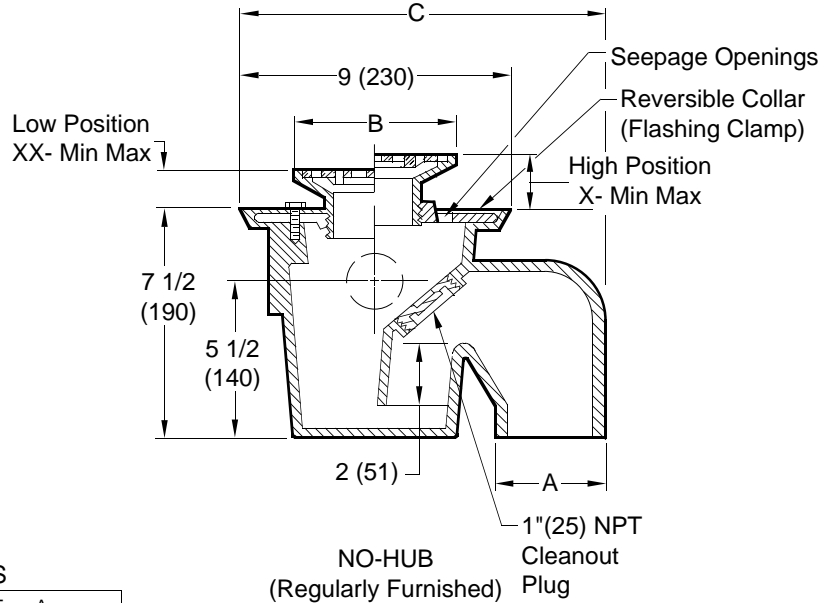
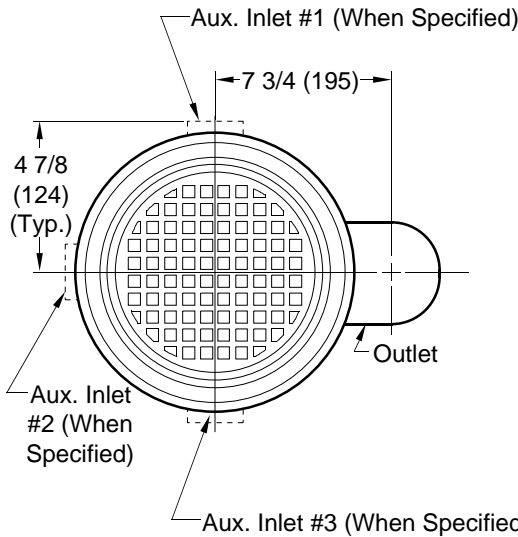
CHECKED BY:
VGD

DRAWN BY:
CM

2095-S

WE CAN ASSUME NO RESPONSIBILITY FOR USE OF SUPERSEDED OR VOID DATA

FLOOR DRAIN WITH INTEGRAL "S" TRAP



AVAILABLE STRAINERS

Strainer Size	*Collar In High Position		*Collar In Low Position		Free Area Sq. In. (Sq. Cm.)	
	Min.	Max.	Min.	Max.	Round	Square
B	X		XX			
Dia. or Sq.						
05 (125)	1 1/4 (32)	2 1/4 (57)	3/4 (19)	1 5/8 (41)	7 (45.16)	6.5 (41.94)
06 (150)	1 1/4 (32)	2 1/4 (57)	3/4 (19)	1 5/8 (41)	9 (58.07)	12.5 (80.65)
07 (180)	1 1/4 (32)	2 1/4 (57)	7/8 (22)	1 7/8 (48)	14 (90.33)	11 (70.97)
08 (205)	1 1/2 (38)	2 1/2 (63)	1 (25)	1 7/8 (48)	17 (109.68)	14 (90.33)
^Δ 09 (230)	1/1/2 (38)	2 3/8 (60)	1 (25)	1 7/8 (48)	18 (116.14)	16 (103.23)
^Δ 10 (255)	1 1/2 (38)	2 3/8 (60)	1 (25)	1 7/8 (48)	23 (148.40)	16 (103.23)

A	C
PIPE SIZE	
02 (50)	11 1/4 (285)
03 (80)	12 3/16 (310)
04 (100)	12 5/8 (320)

^Δ Add 3/8" (10) To All Min./Max. Dimensions For Round Strainer.
 *Collar is reversible to obtain extreme high and low strainer positions.

NOTE: Dimensions Shown in Parenthesis are in Millimeters.

REGULARLY FURNISHED:

Ducto Cast Iron Body with Integral Trap and 1"(25) NPT Plug and Flashing Collar and Satin Nickel Bronze Adjustable Strainer Head as Indicated by Suffix Letter Selected.

VARIATIONS:

- One to Three Side Auxiliary Inlets 1/2" (13) thru 2" (51) Tap, NPT or BS (Specify size, Qty. and Location)
- Vandal Resistant -U (Allen Head Screw)

OPTIONAL MATERIALS:

- Chrome Plated Strainer -CP (Not recommended for traffic floor)
- Galvanized Body -G
- High Polished Nickel Bronze -NB
- Satin Polished Bronze Strainer -PB

REV.	DATE	DESCRIPTION	BY	CKD. BY	WEIGHT POUNDS	VOLUME CUBIC FEET	FIGURE NUMBER
F	10-31-97	Updated Millimeters	EMB	BS			2095-S
E	12-28-95	Chg'd Dim	EMB	SB			
D	5-10-95	Revised	EMB	SB			
C	1-16-95	Revised	EMB	JCS			