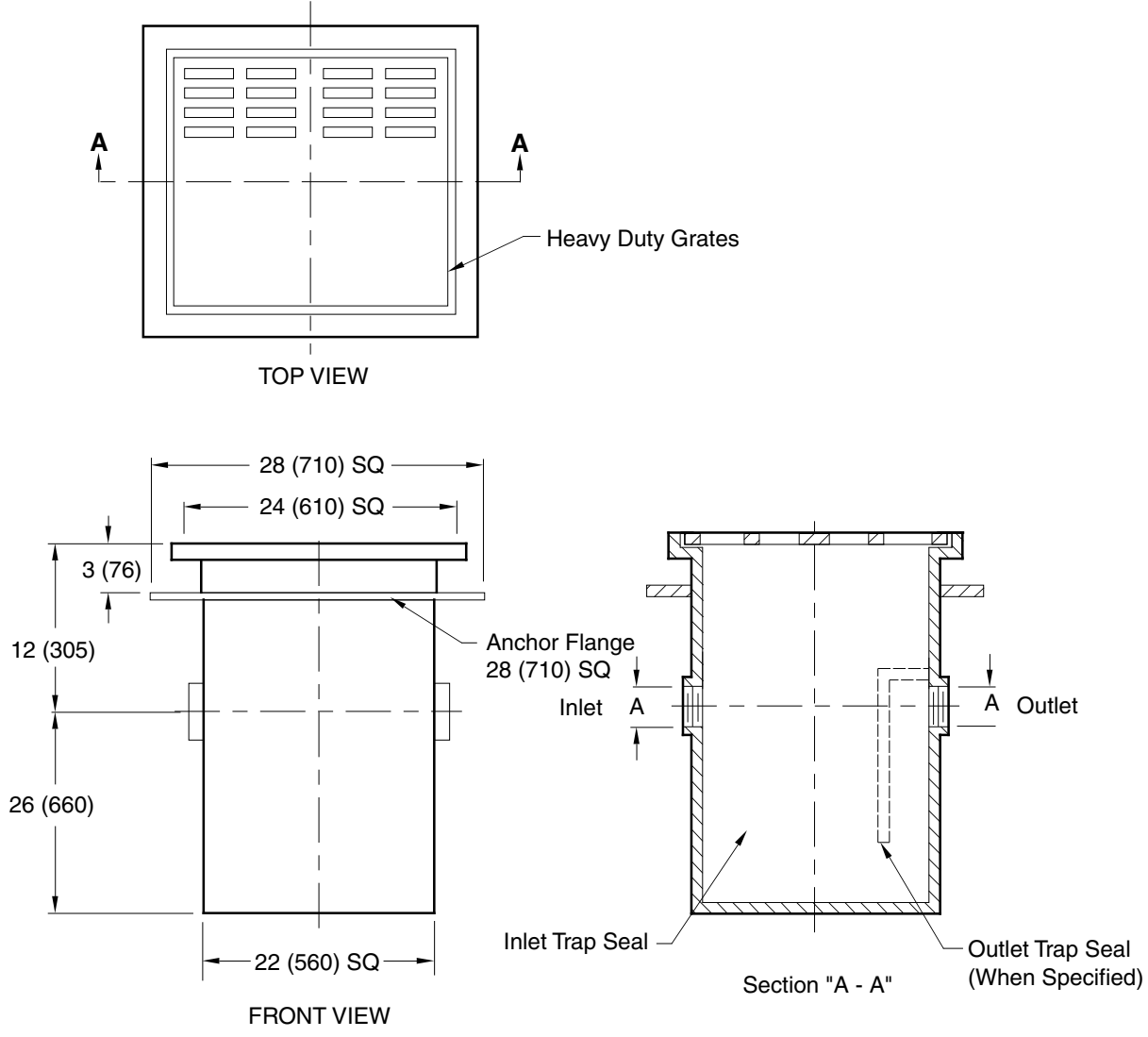


# HEAVY DUTY PARKING AREA CATCH BASIN

DRAWING NUMBER **S8930**  
 SIZE **A**  
 SCALE: **NONE**  
 DATE: **9-25-86**  
 APPROVED BY: **SJM**  
 CHECKED BY: **VG**  
 DRAWN BY: **WAS**  
 DIMENSIONS ARE SUBJECT TO MANUFACTURERS TOLERANCE AND CHANGE WITHOUT NOTICE



A (Pipe Size) = 04" (100)

**REGULARLY FURNISHED:**  
 Fabricated Steel Catch Basin,  
 Gray Duco Coated Inside and  
 Outside, Threaded Inlet and  
 Outlet and Anchor Flange.  
 Secured Heavy Duty Cast  
 Iron Grates.

- VARIATIONS:**
- Extension -E (Specify Additional Height Required from Centerline of Inlet)
  - NO-HUB Adaptor (2) Required (Specify Fig. 2646Y)
  - Outlet Trap Seal
  - Vandal Proof Screws -U

**OPTIONAL MATERIALS:**  
 Ductile Iron Grates -M

**NOTE:** Available with larger or smaller inlet and outlet size when specified.

**NOTE:** Dimensions shown in parentheses are in millimeters.

<b>FIGURE NUMBER</b>	B	3-27-02	Regularly Furnished Update	RN	BS	WEIGHT POUNDS	VOLUME CUBIC FEET	FIGURE NUMBER
	A	3-4-96	Submittal Update	EMB	BS			<b>8930</b>
REV.	DATE	DESCRIPTION		BY	CKD. BY			