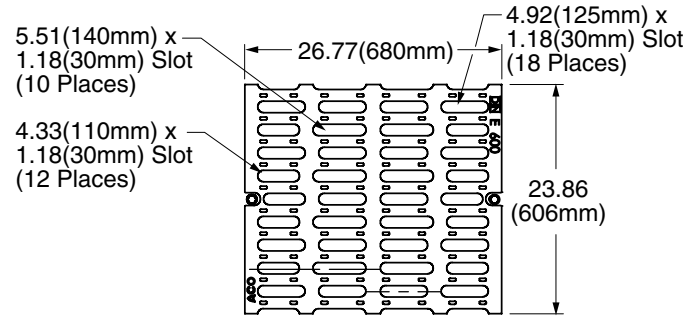
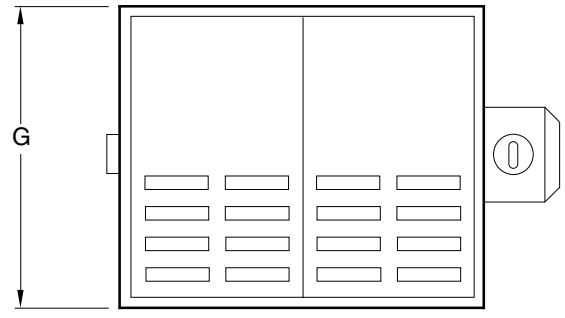


P
 DRAWING NUMBER **S8925**
 SIZE **A**
 SCALE: **NONE**
 DATE: **1-13-92**
 APPROVED BY:
 CHECKED BY:
 DRAWN BY: **TWK**
 FIGURE NUMBER

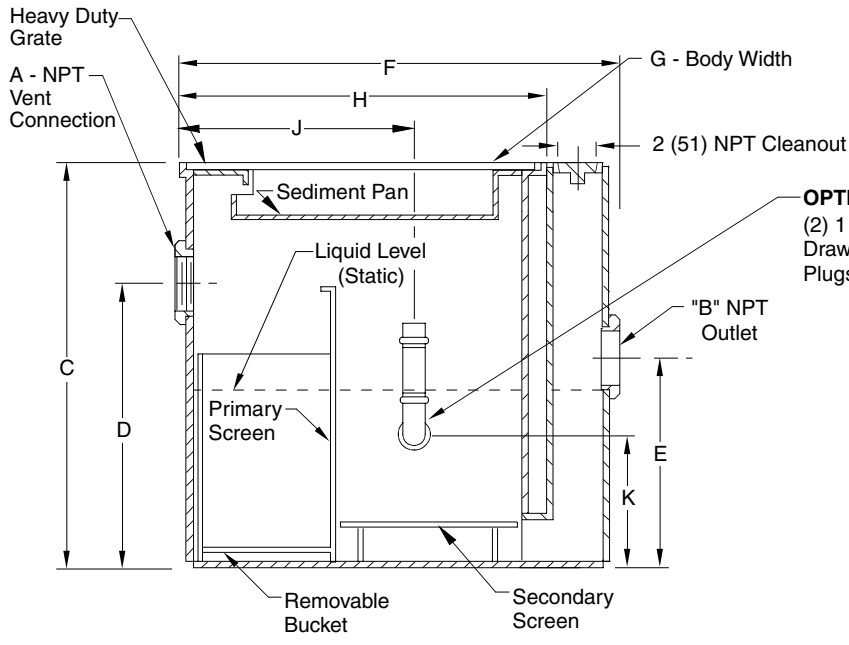
WE CAN ASSUME NO RESPONSIBILITY FOR USE OF SUPERSEDED OR VOID DATA

DIMENSIONS ARE SUBJECT TO MANUFACTURERS TOLERANCE AND CHANGE WITHOUT NOTICE

SEDIMENT/OIL INTERCEPTOR



H2O Ductile Iron Grate Detail **



OPTIONAL
 (2) 1 1/2"(32) Adjustable Gravity Draw-Off Conn. (1 on Each Side)
 Plugs not furnished

NOTE: Interceptor shall be vented on outlet side per local code requirements.

NOTE: It is the responsibility of the installer to check all parts (internal and external) to verify they are in their proper operating order and location.

NOTE: Dimensions shown in parentheses are in millimeters.

NOTE: When specifying H2O Ductile Iron Slotted Grate, the length and width dimensions may vary when using this Grate.

SIZE	SLUDGE CAP LBS	A	B	C	D	E	F	G	H	J	K	No. of 12(305) x 24(610) Grates
8925-12	12	02(50)	02(50)	18(455)	13(330)	10 1/2(265)	17 5/16(440)	12 1/2(320)	12 1/2(320)	9(230)	6(150)	*1
8925-60	60	02(50)	04(100)	26(660)	20(510)	18(455)	29 1/2(750)	12 1/2(320)	24 1/2(620)	19(485)	8(205)	1
8925-100	100	02(50)	04(100)	34(865)	27(685)	22(560)	29 1/2(750)	24 1/2(620)	24 1/2(620)	19(485)	12(305)	2
8925-200	200	02(50)	04(100)	34(865)	27(685)	22(560)	41 1/2(1055)	24 1/2(620)	36 1/2(925)	27(685)	12(305)	3

*Grate is 12(305) x 12(305)

REGULARLY FURNISHED:
 Fabricated Steel Body With Duco Coating and Sediment Pan w/Stainless Steel Bucket w/Perforated Back, Secondary Screen and Heavy Duty Cast Iron Grating.

VARIATIONS:

- Anchor Flange -F
- Flashing Flange and Clamp -F-C
- Oil Draw-Off Assembly
- Secured Grate

OPTIONAL MATERIAL:

- Stainless Steel Body -SS
- Acid Resistant Coating -ARC
- Ductile Iron Grate-M 8925 Series
- **Ductile Iron Slotted Grate (Load Class H2O)

P	8-27-08	Revised Drawing & Note	RN	CL	WEIGHT POUNDS	VOLUME CUBIC FEET	FIGURE NUMBER
N	5-8-06	Revised Drawing & Note	RN	CL			
M	2-7-05	Revised Variations, Note & Optional Mat.	RN	AM			
L	1-14-05	Revised Dwg. & Variations	RN	AM			
REV.	DATE	DESCRIPTION	BY	CKD. BY			8925