

D



**JAY R. SMITH MFG. CO.**  
 DIVISION OF SMITH INDUSTRIES, INC.  
 POST OFFICE BOX 3237  
 MONTGOMERY, ALABAMA 36109-0237 (USA)  
 TEL: 334-277-8520 FAX: 334-272-7396 www.jrsmith.com



LOCATION

# RICE INTERCEPTOR

DRAWING NUMBER  
8905 Series

SIZE  
A

SCALE:  
NONE

DATE:  
12-4-87

APPROVED BY:  
SJM

CHECKED BY:  
TD

DRAWN BY:  
VGD

WE CAN ASSUME NO RESPONSIBILITY FOR USE OF SUPERSEDED OR VOID DATA

DIMENSIONS ARE SUBJECT TO MANUFACTURERS TOLERANCE AND CHANGE WITHOUT NOTICE

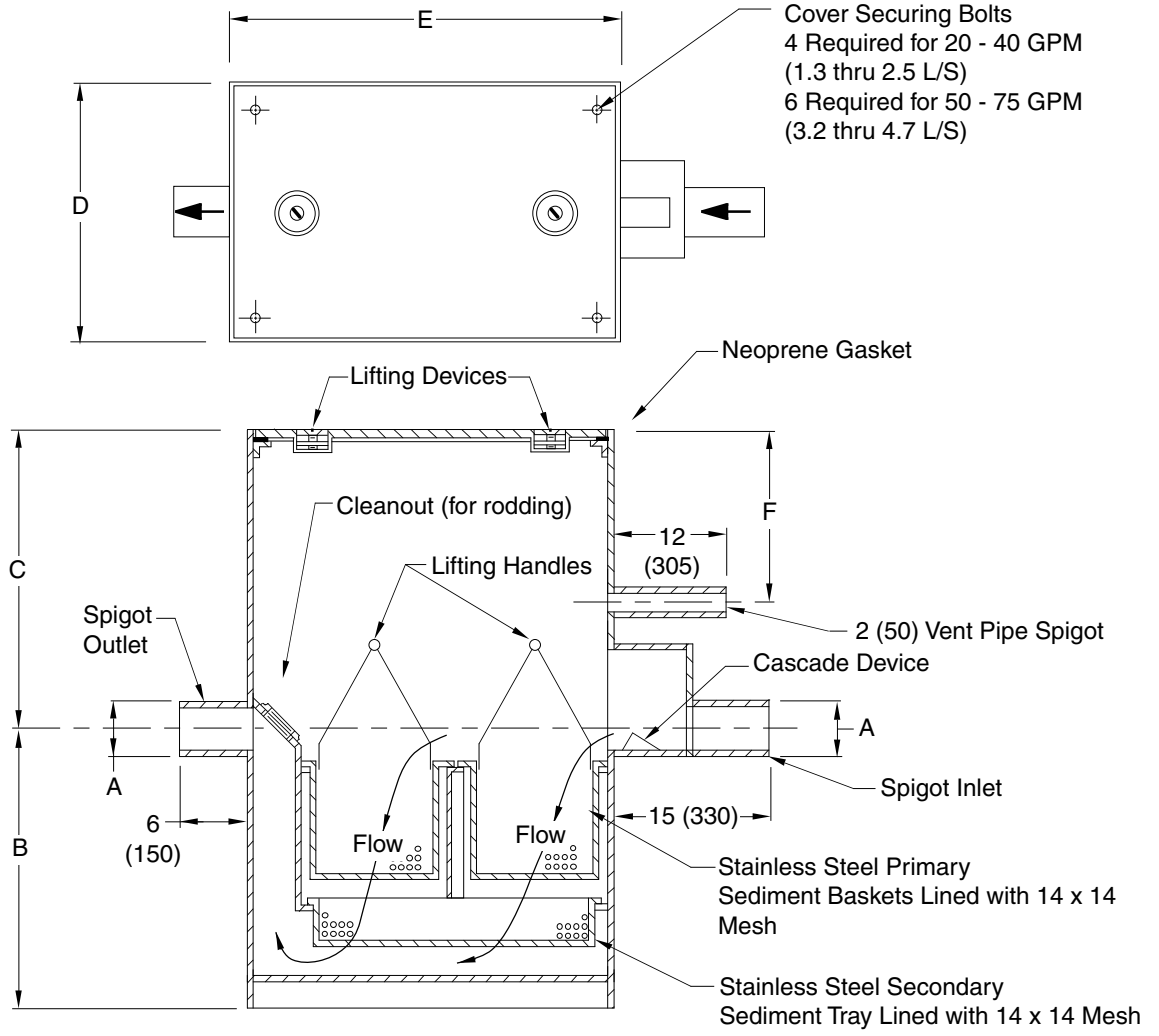


Fig. No.	Flow Rate		Inlet & Outlet (Pipe Size)	Roughing Dimensions				
	GPM	L/S		A	B	C	Width D	Length E
8905-20	20	1.3	03 (80)	24 (610)	16 (405)	20 (510)	26 (660)	7 (180)
8905-30	30	1.9	04 (100)	24 (610)	16 (405)	20 (510)	33 (840)	7 (180)
8905-40	40	2.5	04 (100)	30 (760)	22 (560)	24 (610)	36 (915)	7 (180)
8905-50	50	3.2	04 (100)	32 (815)	24 (610)	30 (760)	42 (1065)	7 (180)
8905-75	75	4.7	06 (150)	36 (915)	28 (710)	36 (915)	48 (1220)	7 (180)

**REGULARLY FURNISHED:**  
 Fabricated Steel with Gray Duco Coating,  
 Complete with Stainless Steel Primary Sediment Baskets, Stainless Steel Secondary Sediment Tray, Spigot Inlet and Outlet and Secured Gasketed Cover with Lifting Devices.

**VARIATIONS:**  
 All Stainless Steel Unit -SS  
 T Threaded Inlet and Outlet Connections

**NOTE:** Dimensions shown in parentheses are in millimeters.

**8905 Series**

D	10-23-97	Added 14 x 14 Mesh	EMB	BS
C	9-23-96	Rev Dwg	EMB	BS
B	5-23-95	Submittal Update	EMB	BS
A	5-2-94	Changed Dim	TBW	BW
REV.	DATE	DESCRIPTION	BY	CKD. BY

WEIGHT POUNDS	VOLUME CUBIC FEET
------------------	----------------------

**FIGURE NUMBER**  
**8905 Series**