

B

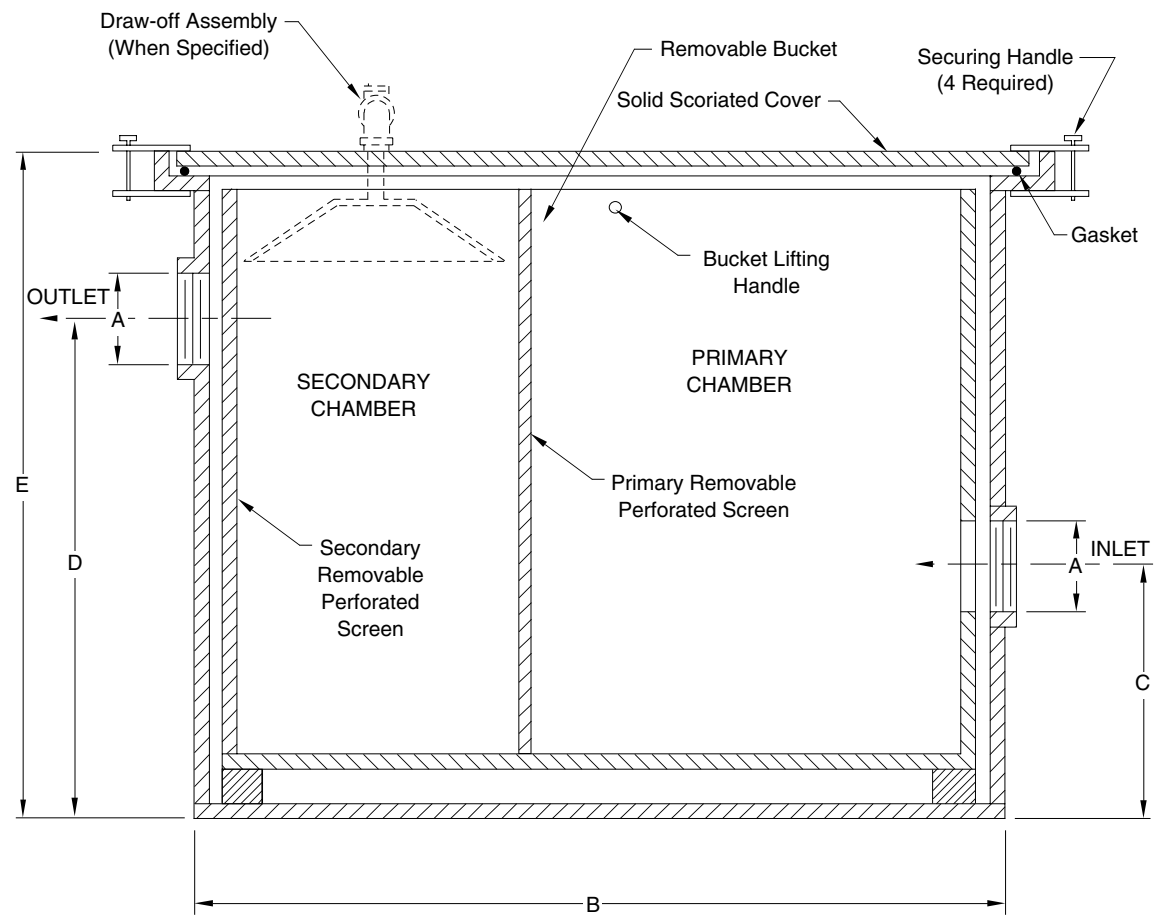
SMITH® JAY R. SMITH MFG. CO.®
 DIVISION OF SMITH INDUSTRIES, INC.
 POST OFFICE BOX 3237
 MONTGOMERY, ALABAMA 36109-0237 (USA)
 TEL: 334-277-8520 FAX: 334-272-7396 www.jrsmith.com



LOCATION

SPECIAL PURPOSE INTERCEPTOR

FOR INTERCEPTION OF PLASTER, METAL SHAVINGS AND POTATO PEELINGS



A(Pipe Size) = 02"(50)

Fig. No.	B	C	D	E	GPM Flow Rate
8743	6x6 (150x150)	4 1/4 (110)	8 1/2 (215)	12 (305)	2 (.12 L/S)
8742	10x10 (255x255)	4 1/4 (110)	8 1/2 (215)	12 (305)	5 (.3 L/S)
8741	14x14(355x355)	6 1/2 (165)	12 1/2 (320)	15 (380)	10 (.6 L/S)
8740	16x16(405x405)	6 1/2 (165)	12 1/2 (320)	15 (380)	12 (.8 L/S)

REGULARLY FURNISHED:
 Gray Duco fabricated Steel Body and Gasketed Solid Scoriated Cover with Removable Stainless Steel Bucket with Primary and Secondary Removable Perforated Screens.

VARIATIONS:
 Fabricated Stainless Steel Body -SS
 Cone and Draw-Off Assembly for Secondary Chamber

Note: Dimensions shown in parentheses are in millimeters.

DRAWING NUMBER
8740 SERIES

SIZE
A

SCALE:
NONE

DATE:
1-27-93

APPROVED BY:

CHECKED BY:
BS

DRAWN BY:
TWK

WE CAN ASSUME NO RESPONSIBILITY FOR USE OF SUPERSEDED OR VOID DATA

DIMENSIONS ARE SUBJECT TO MANUFACTURERS TOLERANCE AND CHANGE WITHOUT NOTICE

8740 SERIES

FIGURE NUMBER

REV.	DATE	DESCRIPTION	BY	CKD. BY
B A	08/26/02 10-28-96	Added GPM Flow Rate to Table Revised dimensions	JJ CMD	CL BS

WEIGHT POUNDS

VOLUME CUBIC FEET

FIGURE NUMBER
8740 SERIES