

F

**SMITH® JAY R. SMITH MFG. CO.®**  
 DIVISION OF SMITH INDUSTRIES, INC.  
 POST OFFICE BOX 3237  
 MONTGOMERY, ALABAMA 36109-0237 (USA)  
 TEL: 334-277-8520 FAX: 334-272-7396 www.jrsmith.com



LOCATION

# LARGE CAPACITY SEDIMENT INTERCEPTOR

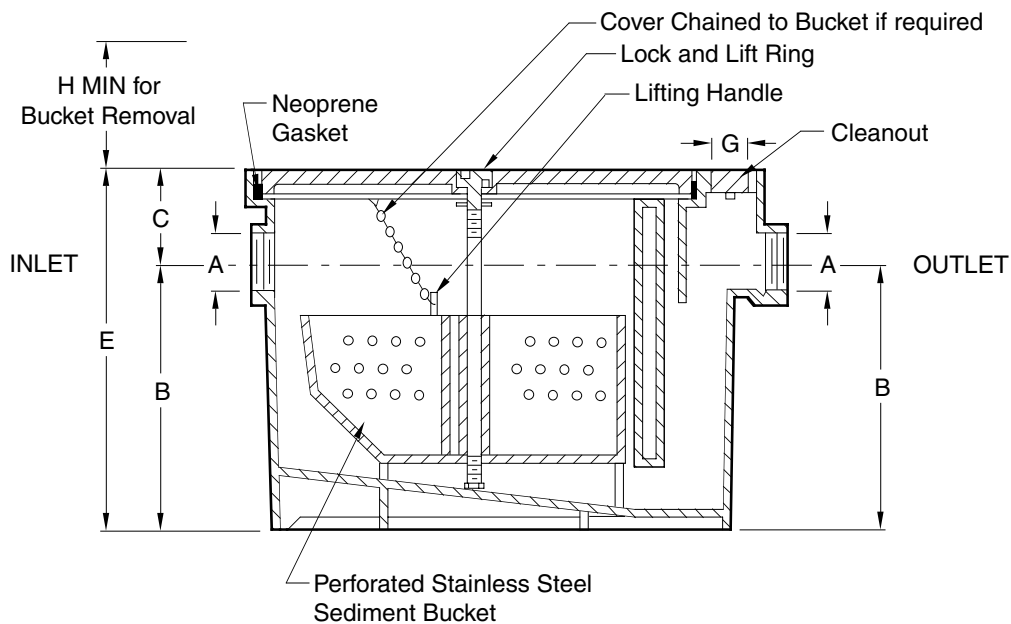
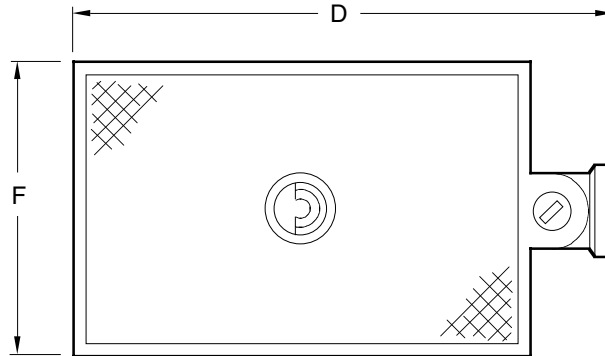


FIG. NO.	A	B	C	D	E	F	G	H
8720-10	02 (50)	9 1/2 (240)	3 3/4 (995)	21 (535)	13 1/4 (335)	12 (305)	2 (51)	7 1/2 (190)
8720-20	03 (75)	13 1/4 (335)	4 (100)	28 1/4 (720)	17 1/4 (440)	16 1/2 (420)	2 (51)	13 (330)
8720-35	03 (75)	16 1/4 (415)	5 (125)	32 1/2 (825)	21 1/4 (540)	19 1/2 (495)	2 (51)	17 (430)

**REGULARLY FURNISHED:**

Fabricated Body and Cover with Gray Duco Coating Inside and Outside, Perforated Stainless Steel Sediment Bucket and Flow Control Fitting.

**NOTE:** Dimensions shown in parentheses are in millimeters.

**VARIATIONS:**

- A.R. Inside -ARI and Outside -ARIO
- Cover Chained to Bucket
- Extension -E
- Extension with Anchor Flange -E-F
- Extension with Flashing Device -E-F-C
- Fine Mesh Screen Bucket Liner

WE CAN ASSUME NO RESPONSIBILITY FOR USE OF SUPERSEDED OR VOID DATA

DIMENSIONS ARE SUBJECT TO MANUFACTURERS TOLERANCE AND CHANGE WITHOUT NOTICE

DRAWING NUMBER  
**S8720**

SIZE  
**A**

SCALE:  
**NONE**

DATE:  
**3-5-73**

APPROVED BY:

CHECKED BY:  
**RK**

DRAWN BY:  
**JH**

**8720 Series**

FIGURE NUMBER

GT  
E

03/30/00  
3-20-96  
5-90

Added Flow Control Fittin  
Submittal Update  
Rev Table

JJ  
EMB  
EMB

BS  
TD  
TD

WEIGHT  
POUNDS

VOLUME  
CUBIC FEET

FIGURE NUMBER

**8720 Series**

REV.

DATE

DESCRIPTION

BY

CKD. BY