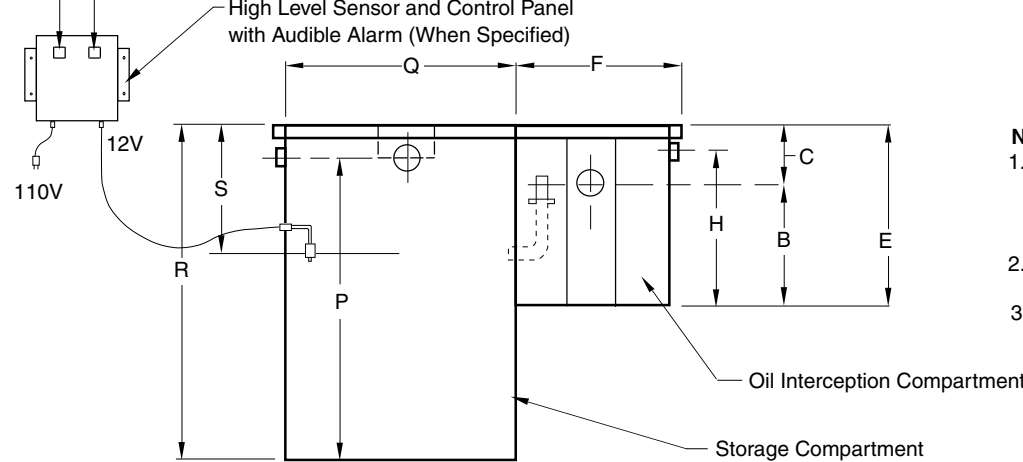
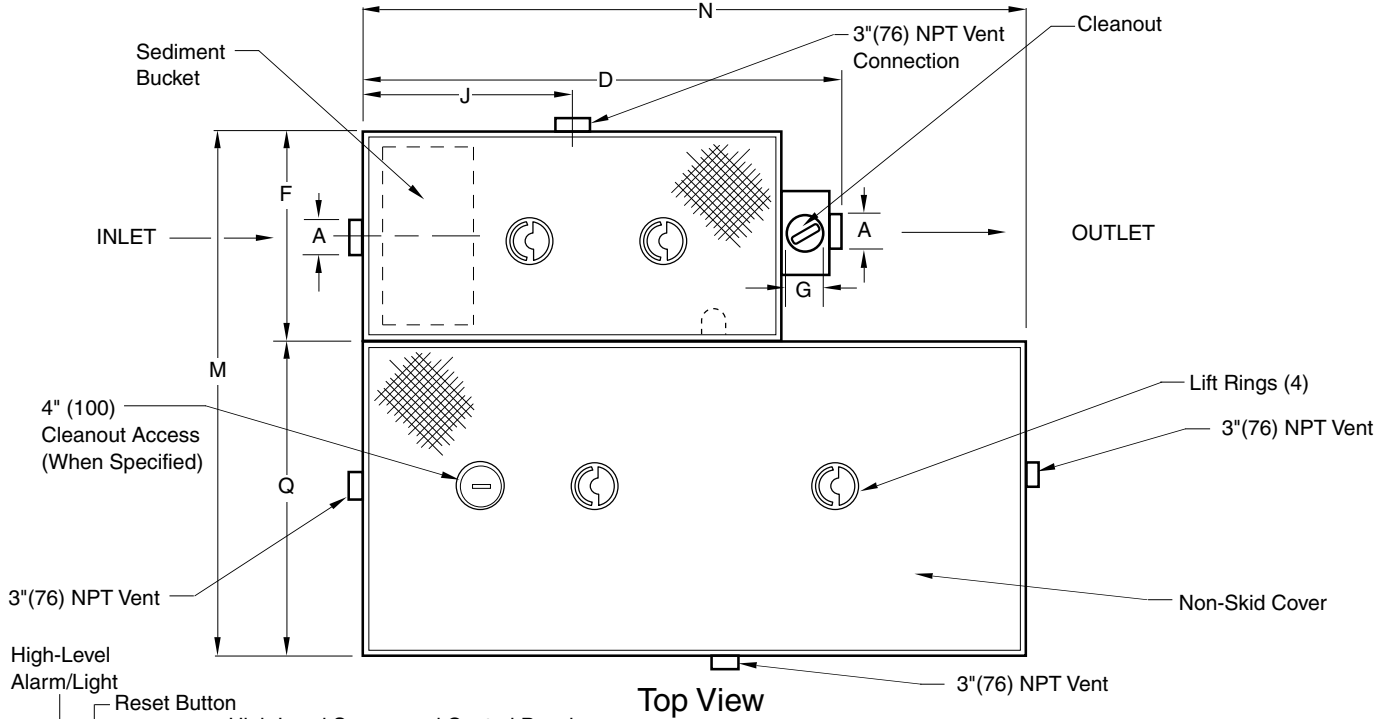




LOCATION

OIL INTERCEPTOR WITH INTEGRAL STORAGE COMPARTMENT



NOTES:

1. When double wall containment is specified the overall dimensions change, consult the factory for the double wall containment dimensions.
2. Dimensions shown in parentheses are in millimeters.
3. Interceptor shall be vented on outlet side per local code requirements.

REGULARLY FURNISHED:

Fabricated Steel with Diamond Plate Cover, Duco Coated Inside and Coal Tar Outside, Complete with Flow Control Fitting.

VARIATIONS:

- Traffic Rated Cover-H20
- Double Wall Containment - DWC (Note 1)
- 4" (100) Cleanout Access
- High Level Sensor and Control Panel - CBS

OPTIONAL MATERIALS:

- Coal Tar Inside

"REFER TO BACK OF SHEET FOR CAPACITIES AND DIMENSIONS"

DRAWING NUMBER
S8599 Series

SIZE
A

SCALE:
NONE

DATE:
8-10-90

APPROVED BY:
TD

CHECKED BY:
TD

DRAWN BY:
TBW

8599 Series

FIGURE NUMBER

WE CAN ASSUME NO RESPONSIBILITY FOR USE OF SUPERSEDED OR VOID DATA

DIMENSIONS ARE SUBJECT TO MANUFACTURERS TOLERANCE AND CHANGE WITHOUT NOTICE

REV.	DATE	DESCRIPTION	BY	CKD. BY	WEIGHT POUNDS	VOLUME RN CUBIC FEET	FIGURE NUMBER
	3-28-07	Revised Regularly Furnished	JJ	TWK			8599 Series
	5-8-06	Revised Notes	RN	CL			
	2-3-06	Revised Optional Materials	RN	CL			
	3-10-05	Revised Variations & Dwg.	RN	CL			

CAPACITIES AND DIMENSIONS

MODEL NUMBER	OIL INTERCEPTOR COMPARTMENT										STORAGE TANK COMPARTMENT									
	A*	B	C	D	E	F	G	H	J	Gals. Capacity	M	N	P	Q	R	S				
● 8599-10-5	02 (50)	9 1/2 (240)	3 3/4 (95)	21 1/4 (540)	13 1/4 (335)	13 (330)	2 (51)	9 3/4 (250)	9 1/2 (240)	5	24 (610)	21 1/4 (540)	10 1/4 (260)	11 (279)	13 1/4 (335)	9 1/4 (235)				
8599-10-50	02 (50)	9 1/2 (240)	3 3/4 (95)	21 1/4 (540)	13 1/4 (335)	13 (330)	2 (51)	9 3/4 (250)	9 1/2 (240)	50	25 (635)	30 (760)	50 3/4 (1290)	12 (305)	55 (1397)	9 1/4 (235)				
8599-15-50	02 (50)	12 (305)	3 1/2 (89)	25 (635)	15 1/2 (395)	14 (355)	2 (51)	12 (305)	10 1/4 (260)	50	26 (660)	30 (760)	50 3/4 (1290)	12 (305)	55 (1397)	9 3/4 (250)				
8599-20-50	03 (80)	13 (330)	4 (100)	28 1/2 (725)	17 (430)	15 3/4 (400)	2 (51)	13 1/2 (345)	12 (305)	50	27 3/4 (705)	30 (760)	50 3/4 (1290)	12 (305)	55 (1397)	12 1/2 (320)				
8599-25-100	03 (80)	15 1/4 (390)	4 1/2 (115)	30 (760)	19 3/4 (500)	16 3/4 (425)	2 (51)	16 1/4 (415)	12 3/4 (325)	100	31 3/4 (805)	50 3/4 (1290)	56 3/4 (1441)	15 (380)	61 (1550)	13 1/2 (345)				
8599-35-100	03 (80)	16 (405)	5 (125)	32 1/2 (825)	21 (535)	18 1/4 (465)	2 (51)	17 1/2 (445)	14 1/2 (370)	100	33 1/4 (845)	50 3/4 (1290)	56 3/4 (1441)	15 (380)	61 (1550)	14 (355)				
8599-50-100	03 (80)	17 1/2 (445)	6 3/4 (170)	35 1/2 (900)	24 1/4 (615)	20 3/4 (525)	2 (51)	20 3/4 (525)	16 (405)	100	35 1/4 (895)	50 3/4 (1290)	56 3/4 (1441)	15 (380)	61 (1550)	16 3/4 (425)				
8599-75-100	04 (100)	21 1/2 (545)	15 1/2 (395)	50 3/4 (1290)	37 (940)	30 1/2 (775)	3 (76)	32 3/4 (830)	21 (535)	100	45 1/2 (1155)	50 3/4 (1290)	56 3/4 (1441)	15 (380)	61 (1550)	24 (610)				
8599-100-250	04 (100)	27 (685)	16 1/2 (420)	54 3/4 (1390)	43 1/2 (1105)	33 1/2 (850)	3 (76)	39 1/4 (995)	23 (585)	250	58 1/2 (1485)	60 3/4 (1543)	60 3/4 (1543)	25 (635)	65 (1650)	25 (635)				
8599-150-250	05 (125)	33 (840)	17 1/2 (445)	60 3/4 (1543)	50 1/2 (1283)	38 1/2 (980)	4 (100)	46 1/4 (1175)	25 1/2 (650)	250	63 1/2 (1613)	60 3/4 (1543)	60 3/4 (1543)	25 (635)	65 (1650)	27 (685)				
8599-200-250	05 (125)	37 (940)	17 1/2 (445)	67 3/4 (1720)	54 1/2 (1385)	43 1/2 (1105)	4 (100)	50 1/4 (1275)	29 (735)	250	68 1/2 (1740)	60 3/4 (1543)	60 3/4 (1543)	25 (635)	65 (1650)	27 (685)				
8599-250-500	05 (125)	40 (1015)	18 (455)	73 3/4 (1875)	58 (1473)	47 1/2 (1205)	4 (100)	53 3/4 (1365)	32 (815)	500	79 1/2 (2019)	90 3/4 (2305)	71 3/4 (1822)	32 (815)	76 (1930)	27 1/2 (700)				
8599-300-500	05 (125)	43 1/2 (1105)	18 (455)	85 3/4 (2178)	61 1/2 (1562)	54 1/2 (1385)	4 (100)	57 1/4 (1454)	38 (965)	500	86 1/2 (2197)	90 3/4 (2305)	71 3/4 (1822)	32 (815)	76 (1930)	27 1/2 (700)				
8599-350-500	05 (125)	43 1/2 (1105)	18 (455)	85 3/4 (2178)	61 1/2 (1562)	54 1/2 (1385)	4 (100)	57 1/4 (1454)	38 (965)	500	86 1/2 (2197)	90 3/4 (2305)	71 3/4 (1822)	32 (815)	76 (1930)	27 1/2 (700)				
8599-400-500	06 (150)	43 1/2 (1105)	18 (455)	85 3/4 (2178)	61 1/2 (1562)	54 1/2 (1385)	4 (100)	57 1/4 (1454)	38 (965)	500	86 1/2 (2197)	90 3/4 (2305)	71 3/4 (1822)	32 (815)	76 (1930)	27 1/2 (700)				
8599-450-500	06 (150)	48 (1220)	18 (455)	103 1/4 (2655)	66 (1640)	64 1/2 (1640)	5 (125)	61 3/4 (1570)	46 (1170)	500	96 1/2 (2438)	90 3/4 (2305)	71 3/4 (1822)	32 (815)	76 (1930)	28 (710)				
8599-500-750	06 (150)	48 (1220)	18 (455)	103 1/4 (2655)	66 (1640)	64 1/2 (1640)	5 (125)	61 3/4 (1570)	46 (1170)	750	99 1/2 (2438)	103 1/4 (2635)	83 3/4 (2127)	35 (890)	88 (2235)	28 (710)				

* Larger Inlet and Outlet Size Available Specify Required Size.

NOTE: Model number is defined as: 8599-10-50 Series number Size of storage tank compartment in gallons. GPM flow rate for oil interceptor.

● Recommended for Elevator Pits.

REV.	DATE	DESCRIPTION	BY	CKD. BY	WEIGHT POUNDS	VOLUME CUBIC FEET	FIGURE NUMBER
	05/25/07 3-5-04 10-31-95	Added 8599-10-5 to chart Revised Chart Added Millimeters	JJ RN EMB	JM JL BS			8599 SERIES BS