



JAY R. SMITH MFG. CO.
 DIVISION OF SMITH INDUSTRIES, INC.
 POST OFFICE BOX 3237
 MONTGOMERY, ALABAMA 36109-0237 (USA)
 TEL: 334-277-8520 FAX: 334-272-7396 www.jrsmith.com



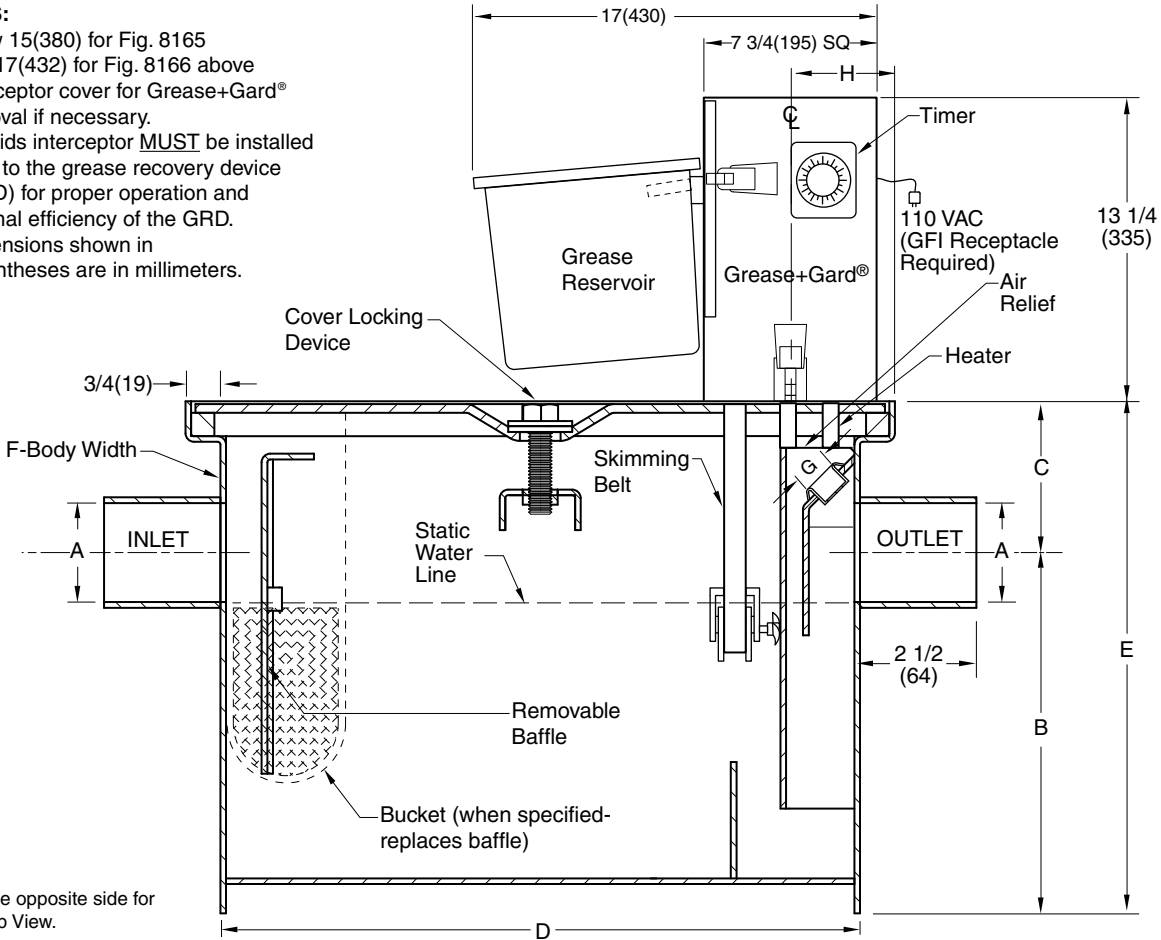
LOCATION

STAINLESS STEEL GREASE RECOVERY DEVICE (GRD)

FUNCTION: Used in all areas where fats, oils and grease must be intercepted and collected. The unique fully automatic grease removal design permits removal of accumulated grease without having to remove the cover. Accumulated grease in liquid form is automatically skimmed off and discharged into a reservoir for convenient disposal.

NOTES:

1. Allow 15(380) for Fig. 8165 and 17(432) for Fig. 8166 above interceptor cover for Grease+Gard® removal if necessary.
2. A solids interceptor **MUST** be installed prior to the grease recovery device (GRD) for proper operation and optimal efficiency of the GRD.
3. Dimensions shown in parentheses are in millimeters.



See opposite side for Top View.

FIG. NO.	GPM FLOW RATE (L/M)	GREASE CAP LBS (KG)	A	B	C	D	E	F (WIDTH)	G (Plug Size)	H
8165-20	20(75)	40(15)	03(75)	12 3/4(325)	4 (100)	19 1/2(495)	16 3/4(425)	19 1/2(495)	1 1/2(38)	5 1/2(140)
8165-25	25(95)	50(19)	03(75)	14 1/4(360)	4 1/8(105)	21 1/8(538)	18 3/8(468)	21 1/8(538)	1 1/2(38)	5 1/2(140)
8165-35	35(132)	70(26)	03(75)	14 1/2(370)	4 1/2(115)	22 1/2(570)	19(485)	22 1/2(570)	1 1/2(38)	5 1/2(140)
8165-50	50(189)	100(37)	03(75)	14 1/2(370)	5 1/4(135)	31 3/4(805)	19 3/4(500)	22 1/2(570)	1 1/2(38)	16 3/4(425)
LOW TYPE INTERCEPTOR										
8166-20	20(75)	40(15)	03(75)	7(180)	3 1/2 (89)	39 1/2(1005)	10 1/2(265)	21 7/16(543)	1 1/2(38)	20 1/2(520)
8166-35	35(132)	70(26)	03(75)	7(180)	4 3/4 (120)	52 1/4(1325)	11 3/4(300)	27 5/16(698)	1 1/2(38)	26 7/8(683)
8166-50	50(189)	100(37)	03(75)	10(255)	6 (150)	50 1/4(1275)	16(405)	27 5/16(698)	1 1/2(38)	25 7/8(658)

REGULARLY FURNISHED:
 Automatic Grease Recovery Device (GRD) with Type 304 Stainless Steel Interceptor, No-Hub Connections, Flow Control Fitting and Grease+Gard® Skimmer with Heater and Grease Reservoir.

VARIATIONS:
 T Threaded Inlet/Outlet
 Extension -E (12 (305) maximum height available)
 Bucket -B (Allow 15 (380) above interceptor for removal)

OPTIONAL MATERIALS:
 Duco Coated Steel -A505

DRAWING NUMBER
S8165-8166

SIZE
A

SCALE:
NONE

DATE:
5-31-06

APPROVED BY:
CL

CHECKED BY:
CL

DRAWN BY:
TBW

8165-8166

WE CAN ASSUME NO RESPONSIBILITY FOR USE OF SUPERSEDED OR VOID DATA

DIMENSIONS ARE SUBJECT TO MANUFACTURERS TOLERANCE AND CHANGE WITHOUT NOTICE

E	09/04/07	Rev. Drawing, Notes and Variations	JJ	CL
D	4-9-07	Added @ to Grease+Gard	RN	CL
C	3-27-07	Rev. Drawing, NOTES	TBW	CL
B	3-8-07	Rev. NOTE	RN	CL
REV.	DATE	DESCRIPTION	BY	CKD. BY

WEIGHT POUNDS
 VOLUME CUBIC FEET

FIGURE NUMBER
8165-8166
SERIES

