

INSTRUCTIONS

OPERATING AND MAINTENANCE INSTRUCTIONS

SMITH 8000GT SERIES GREASE INTERCEPTORS (Also Applicable to Series - 8000GTX and 8300GT)

The Smith "GT" style grease interceptor offers easy removal of intercepted grease. Removal is accomplished without removing the cover - grease is simply drawn off into a container and disposed of. The following instructions must be followed to obtain maximum efficiency of the draw-off operation.

TIME BETWEEN CLEANING The frequency of the draw-off cycle is determined by the use load factor of the interceptor. The ideal cleaning cycle can be set after the unit is in operation for several weeks. By observing the amount of grease used and the frequency of use, the operator can determine when a logical cleaning cycle is required.

WHEN TO CLEAN The ideal time is immediately after the interceptor has been heavily used, however, any other convenient time can be specified. When the grease interceptor is ready follow these instructions step-by-step:

1. With the line control valve (11) in the open position and the automatic draw off valve (10) in closed position, run a full stream of hot water through the interceptor. It is preferable to have this stream of water at 140° F or higher. The full stream of hot water should be allowed to run through the interceptor for a period of at least 2 minutes.
2. Turn off the stream of hot water running into the interceptor and allow the unit to cool for a period of three to five minutes.
3. The draw-off cycle can now be started. Close the line control valve (11).
4. Open the automatic draw-off valve (10) at the top of the interceptor and place a pail or container underneath this valve. Run hot water through the interceptor at this time at a rate between 1 1/2 and 2 1/2 gallons a minute.
5. After the water has run into the interceptor for a short period, grease will start to flow from the automatic draw-off valve (10).
6. Allow the grease to flow out of the automatic draw-off valve (10) until clear water appears.
7. When clear water appears at the automatic draw-off valve, shut off the flow of hot water into the interceptor, and then turn the line control valve to open position. Close the automatic draw-off valve at the top of the interceptor.
8. The interceptor in this position is again ready for normal use.

INSTRUCTIONS FOR THE 8000GTX TYPE SERIES AND THE 8300GT SERIES INTERCEPTOR

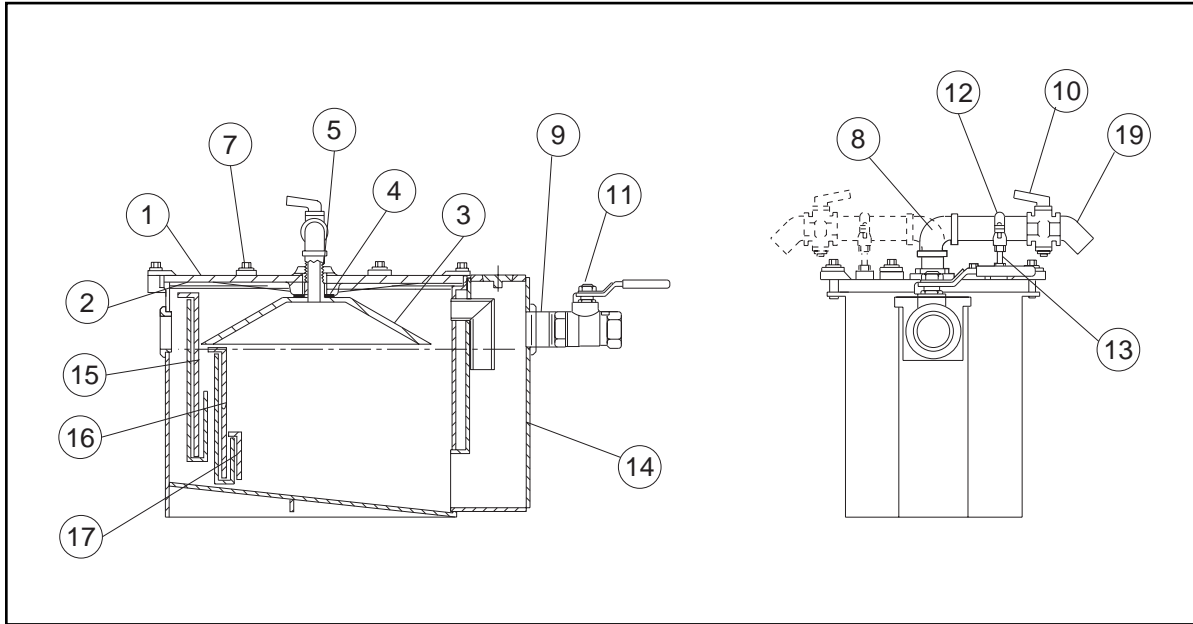
Series 8000GTX and 8300GT interceptors are not supplied with normal draw-off piping. Since these units are applied differently, a modified type of draw-off valve piping is necessary. A length of hose in lieu of regular draw-off piping is supplied with 8000GTX and 8300GT. Each interceptor has a 1"(25) cap at the cover. When cleaning is required, the 1"(25) cap is removed and the length of hose screwed onto the protruding nipple. The same instructions above are then applicable for cleaning for these two types of interceptors. Follow thoroughly the above listed instructions. When the operation is completed, remove the length of hose and replace the cap to its original position.

(see reverse side for parts list)

INSTRUCTIONS

PARTS LIST, OPERATING AND MAINTENANCE INSTRUCTIONS

SMITH 8000GT SERIES GREASE INTERCEPTORS (Also Applicable to Series - 8000GTX and 8300GT)



- | | | |
|----------------------------|---------------------------------|-----------------------------------|
| 1. Cover | 8. Elbow (90°) | 15. Baffle No. 1 |
| 2. Cover Gasket | 9. Nipple | 16. Baffle No. 2 |
| 3. Accumulating Cone | 10. Grease Draw-off valve | 17. Baffle No. 4 |
| 4. Cone Gasket | 11. Line Control Valve & Nipple | 18. Flo-control valve (not shown) |
| 5. Locknut | 12. Steel Support Clamp | 19. Elbow (45°) |
| 6. "T" Handles (not shown) | 13. Support Clamp Stud | |
| 7. Cover Bolt | 14. Interceptor Body | |

NOTE:

When replacement parts are ordered, please specify part number and interceptor size.

*OPTIONAL DRAW-OFF ASSEMBLY LOCATION:

Automatic draw off piping is regularly furnished on the left side of the interceptor (when facing outlet). This assembly may be turned to the opposite side as necessary, as follows:

1. Remove steel support clamp (12)
2. Unscrew nipple (9) with attached automatic draw-off valve (10)
3. Rotate elbow (8) 180°
4. Remove stud (13) and lower part of clamp (12) and screw into stud tapping on opposite side.
5. Replace nipple valve assembly (9 and 10) and top of support clamp.

8000GTX AND 8300GT SERIES

The elbow (8), nipple (9) automatic draw-off valve (10), steel support clamp (12) and support clamp stud (13) are not supplied for both of these series. In lieu of these parts a 1"(25) cap (with chain) and a rubber hose assembly are used for the draw-off operation.