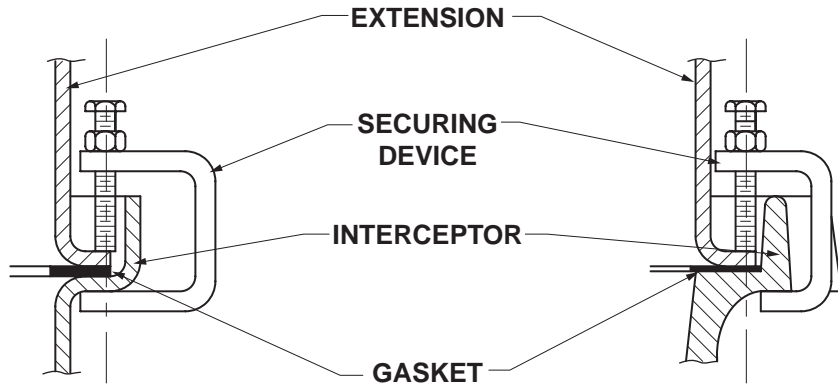


# EXTENSION SECURING INSTRUCTIONS INTERCEPTORS

NOTE: THIS APPLIES TO OIL & GREASE INTERCEPTORS ONLY.



SEC X-X  
STEEL

SEC X-X  
CAST IRON

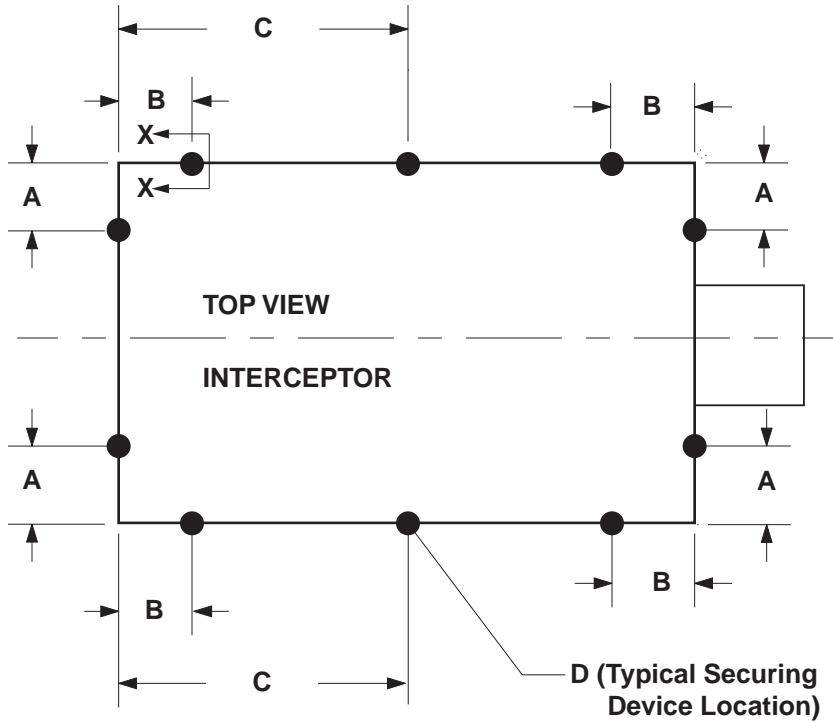


FIGURE NUMBER	A*	B*	C	D
8004, 8007, 8010, 8015	-	2	-	4
8020, 8025, 8035	3	4	-	8
8050	4	4	-	8
8120	4	6	-	8
8135, 8150	4	6	CENT	10

D = Total Number of Securing Devices Required

\* Shown in inches



MEMBER OF:  
**JAY R. SMITH MFG. CO.**  
 DIVISION OF SMITH INDUSTRIES, INC.  
 POST OFFICE BOX 5237  
 MONTGOMERY, ALABAMA 36109-0237 (USA)  
 TEL: 334-277-8520 FAX: 334-272-7396 www.jrsmith.com

