



**JAY R. SMITH MFG. CO.**  
 DIVISION OF SMITH INDUSTRIES, INC.  
 POST OFFICE BOX 3237  
 MONTGOMERY, ALABAMA 36109-0237 (USA)  
 TEL: 334-277-8520 FAX: 334-272-7396 www.jrsmith.com

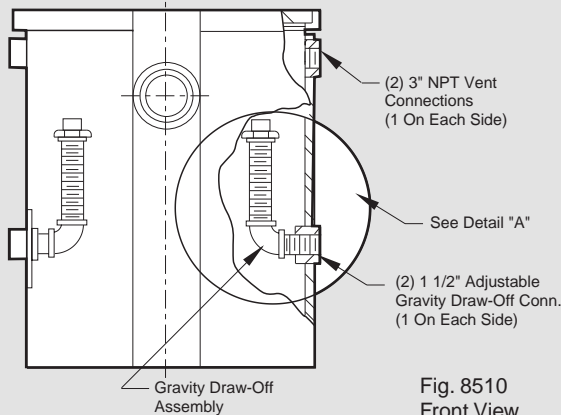
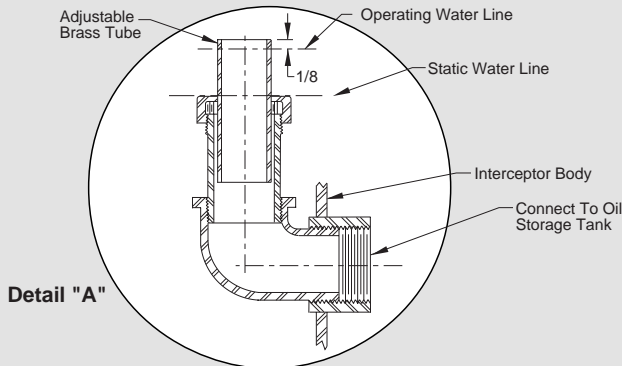


LOCATION

## 8500 SERIES OIL INTERCEPTOR MAINTENANCE INSTRUCTIONS

1. COVER SHOULD BE REMOVED PERIODICALLY TO CHECK SEDIMENT BASKET TO EMPTY ANY COLLECTION OF DEBRIS.
2. THE NEOPRENE GASKET WHICH SERVES AS A SEAL FOR THE COVER SHOULD ALSO BE EXAMINED TO SEE THAT IT IS FITTING OR SET PROPERLY. IF THE GASKET BECAME TORN OR WORN OR RIPPED THROUGH ABUSE, IT SHOULD THEN BE REPLACED WITH A NEW GASKET.
3. AT THE TIMES WHEN THE BUCKET IS BEING CHECKED, ATTENTION SHOULD BE GIVEN TO THE OUTLET LEG OF THE UNIT TO SEE WHETHER THERE MIGHT BE A SMALL ACCUMULATION OF DEBRIS AT THAT POINT.
4. THE VENT OPENINGS WITHIN THE INTERCEPTOR CAN ALSO BE CHECKED TO SEE IF ANY DEBRIS THAT COULD HAVE BECOME LODGED IN THIS AREA IS REMOVED.
5. ALSO THE AIR RELIEF PORT CAN BE CHECKED FOR SAME.

ASIDE FROM THE ABOVE MENTIONED POINTS, THERE IS ACTUALLY NOTHING MORE WHICH NEEDS PARTICULAR ATTENTION MAINTENANCE WISE, AS THE UNIT IS AN AUTOMATIC DRAW-OFF TYPE, IT SHOULD NOT PRESENT ANY SEVERE PROBLEMS.



### INSTRUCTIONS

#### FOR ADJUSTING GRAVITY OIL DRAW-OFF

When Interceptor is completely installed, establish operating water line by running water thru interceptor at maximum flow rate. Mark or locate this operating water line and adjust tubing, 1/8" above this line as shown in Detail "A". Adjustment should be checked after Interceptor is in operation. If water is present in oil removed through gravity draw-off, adjustable brass tube should be raised slightly, until no water is present

DRAWING NUMBER

SIZE  
**A**

SCALE:  
 NONE

DATE:

APPROVED BY:

CHECKED BY:

DRAWN BY:

FIGURE NUMBER

WE CAN ASSUME NO RESPONSIBILITY FOR USE OF SUPERSEDED OR VOID DATA

DIMENSIONS ARE SUBJECT TO MANUFACTURERS TOLERANCE AND CHANGE WITHOUT NOTICE

REV.	DATE	DESCRIPTION	BY	CKD. BY

WEIGHT  
 POUNDS

VOLUME  
 CUBIC FEET

FIGURE NUMBER

**PM 2610**