

DRAWING NUMBER
2698-ADA

SIZE
A

SCALE:
NONE

DATE:
12-10-98

APPROVED BY:
CS

CHECKED BY:
JCS

DRAWN BY:
TBW

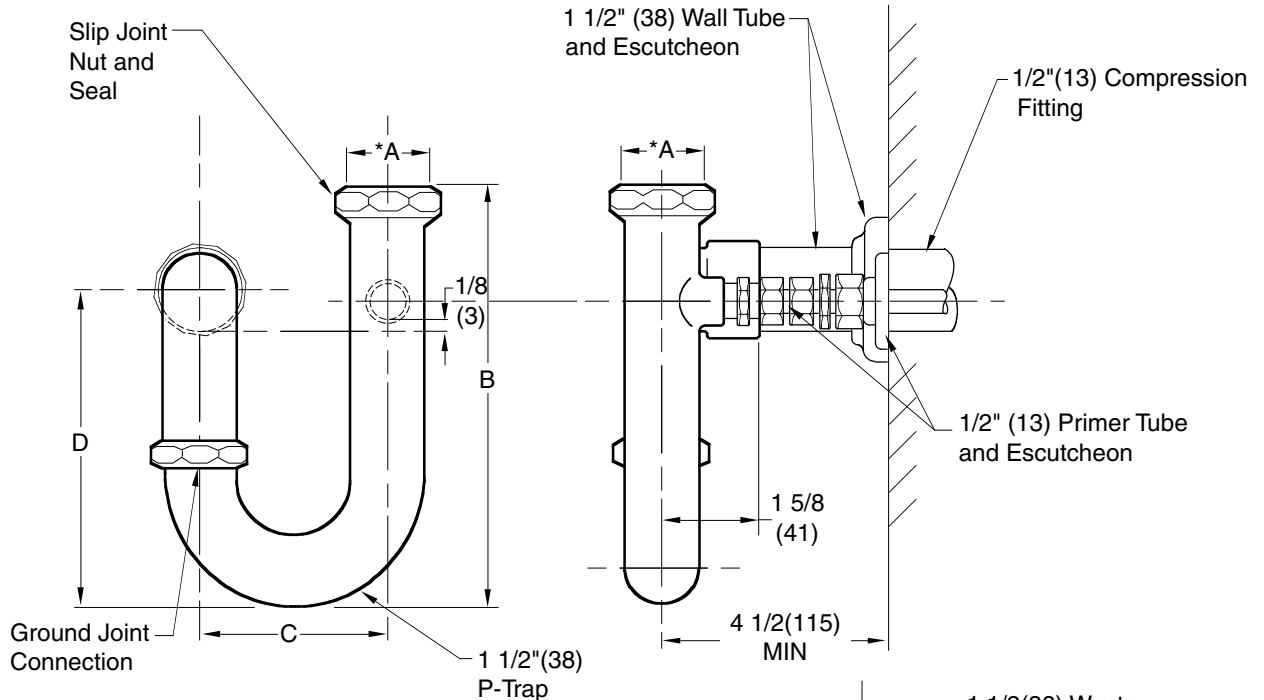
2698-ADA

FIGURE NUMBER

WE CAN ASSUME NO RESPONSIBILITY FOR USE OF SUPERSEDED OR VOID DATA

ADA PRIME-EZE WATER SAVER TRAP PRIMER

FUNCTION: The water saver trap primer utilizes the temporary "head" of water in the p-trap which occurs during use of certain plumbing fixtures like lavatories and drinking fountains. This temporary head of water is sufficient to cause an "overflow" through the connection to allow a small amount of water to flow by gravity through a pipe under the floor to the floor drain trap primer connection. Thus, the floor drain trap seal is maintained.



IMPORTANT: P-Trap must be mounted parallel with wall and outlet left of the lavatory drain.

FRONT VIEW

*1 1/4 (32) and 1 1/2 (38) Slip Joint Nuts are Provided to Accommodate the Appropriate Fixture Tailpiece. Ground Joint Elbow is Threaded 1 1/2 (38) N.P.T.

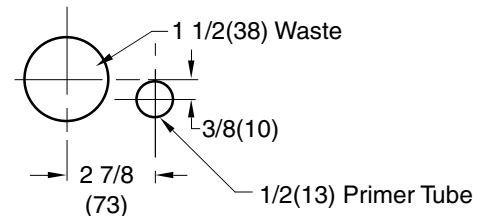
NOTE: Invert of connection located 1/8" (3) above static water level enabling "overflow" into primer tube when temporary head of water is created.

REGULARLY FURNISHED: Satin Chrome Plated Cast Bronze P-trap with Ground Joint Connection, Threaded Wall Tube, Slip Joint Nuts, Washers and Escutcheons, 1/2" (13) Primer Tube with Compression Fitting Connection at Wall.

OPTIONAL MATERIALS:

Polished Chrome Plated Cast Bronze P-Trap -CP

NOTE: Dimensions shown in parentheses are in millimeters.



RECOMMENDED ROUGH-IN

A (INLET SIZE)	B	C	D
0125 (32) or 0150 (38)	6 (150)	2 7/8 (73)	5 (125)

U.S. PATENT
4,218,786

CANADIAN PATENT
1,139,184



Listed to
ASSE STD. 1044



File No
3253

WEIGHT POUNDS	VOLUME CUBIC FEET	FIGURE NUMBER 2698-ADA

REV.	DATE	DESCRIPTION	BY	CKD. BY



JAY R. SMITH MFG. CO.®
 MEMBER OF ACORN'S FAMILY OF COMPANIES
 POST OFFICE BOX 3237
 MONTGOMERY, ALABAMA 36109-0237 (USA)
 TEL: 334-277-8520 FAX: 334-272-7396 www.jrsmith.com



MEMBER OF:

LOCATION

DRAWING NUMBER
S2698-ADA-BS

SIZE
A

SCALE:
NONE

DATE:
12-10-98

APPROVED BY:
CS

CHECKED BY:
JCS

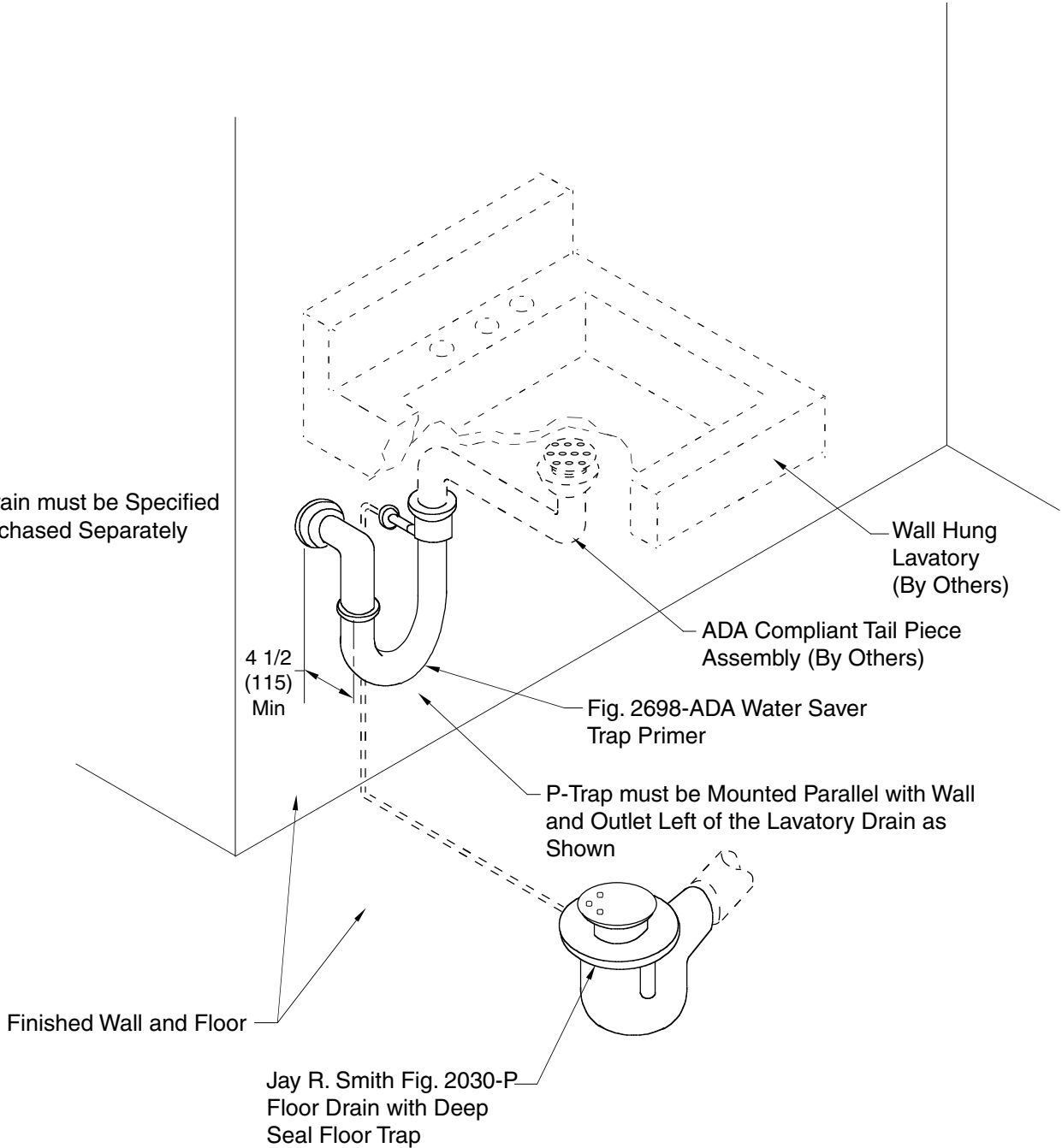
DRAWN BY:
TBW

2698-ADA-BS

WE CAN ASSUME NO RESPONSIBILITY FOR USE OF SUPERSEDED OR VOID DATA

ADA PRIME-EZE WATER SAVER TRAP PRIMER

NOTE:
Floor Drain must be Specified and Purchased Separately



Listed to
ASSE STD. 1044



File No
3253

REV.	DATE	DESCRIPTION	BY	CKD. BY

WEIGHT POUNDS	VOLUME CUBIC FEET

FIGURE NUMBER
2698-ADA-BS