



**JAY R. SMITH MFG. CO.**  
 DIVISION OF SMITH INDUSTRIES, INC.  
 POST OFFICE BOX 3237  
 MONTGOMERY, ALABAMA 36109-0237 (USA)  
 TEL: 334-277-8520 FAX: 334-272-7396 www.jrsmith.com



MEMBER OF:

LOCATION

# FLOOR DRAINS

## SMALL AREA MEDIUM DUTY

**FUNCTION:** Used in areas with moderate traffic and where waste water contains no sediment or debris and construction requires a shallow body drain for "on grade" applications.

Free Area  
13 SQ IN

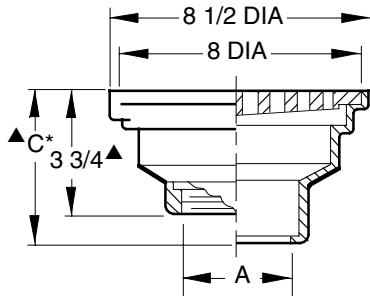


Fig. 2271... CAULK REGULAR

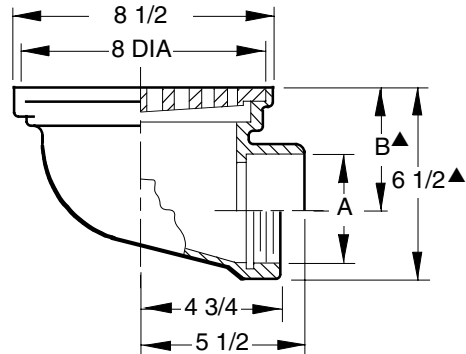


Fig. 2276... CAULK REGULAR

A SIZE	2	3	4
B	5 for Caulk, NO-HUB and Speedi-Set. 3 1/2 for Threaded.		

\*This Dimension to Internal Stop of Speedi-Set Gasket.

A	B
2	4 3/4
3	4 1/4
4	3 3/4

▲add 1/4" when bronze top is specified.

**REGULARLY FURNISHED:**  
 Duco Cast Iron Body and Loose Set  
 Tractor Grate.

**VARIATIONS:**

- Sediment Bucket (B)
- No Hub (Fig 2271 only)
- Vandal Proof Top (U)
- Flat Bottom Strainer (FBS) (Fig. 2271 only)
- Bar Grate (Specify Fig. 2270)
- NO-HUB Adaptor (Y) (Fig. 2276 only)
- Threaded Outlet (T)
- Speedi-Set Outlet (94) (Fig. 2271 only)
- Trap Primer Connection (P)

**OPTIONAL MATERIALS:**

- Galvanized Cast Iron (G)
- Polished Bronze Top (PB)
- Nickel Bronze Top (NB)
- Ductile Iron Bucket (M)

DRAWING NUMBER  
S2271

SIZE  
A

SCALE:  
NONE

DATE:  
5-17-85

APPROVED BY:  
TD

CHECKED BY:  
TD

DRAWN BY:  
TWK

**2271, 2276**

FIGURE NUMBER

REV.	DATE	DESCRIPTION	BY	CKD. BY
A	11-12-91	Rev. Var.	TWK	BS

WEIGHT  
POUNDS

VOLUME  
CUBIC FEET

FIGURE NUMBER

**2271, 2276**

WE CAN ASSUME NO RESPONSIBILITY FOR USE OF SUPERSEDED OR VOID DATA

DIMENSIONS ARE SUBJECT TO MANUFACTURERS TOLERANCE AND CHANGE WITHOUT NOTICE