

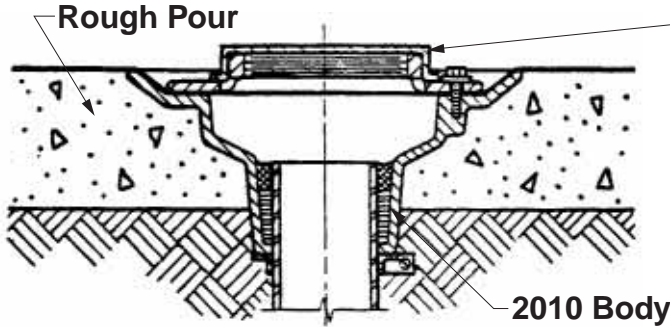
2010 SERIES
 DRAIN PROTECTOR CAP

INSTRUCTIONS

"PROTECT-O-PAC SHIELD"
 SHRINK PACKAGING

STEP 1

2010 BODY SET IN ROUGH POUR



PLASTIC PROTECTOR CAP—REGULARLY FURNISHED ON ALL 2010 COLLARS, PREVENTS DEBRIS FROM ENTERING DRAIN AND PROTECTS THREADS IN COLLAR PRIOR TO STRAINER HEAD INSTALLATION

STEP 2

"PROTECT-O-PAC SHIELD"



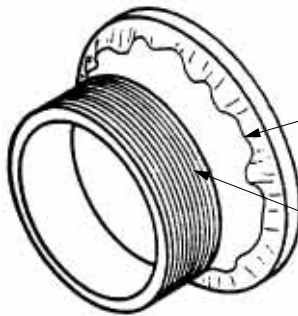
TYPE "A" STRAINER HEAD PACKAGED FOR SHIPMENT AND STORAGE AT JOB SITE .

P.V.C . FILM SHEET—ENCASES ENTIRE STRAINER HEAD

SHIELD—IDENTIFIES ITEM AND PROTECTS TOP

STEP 3

PREPARATION FOR STRAINER HEAD INSTALLATION

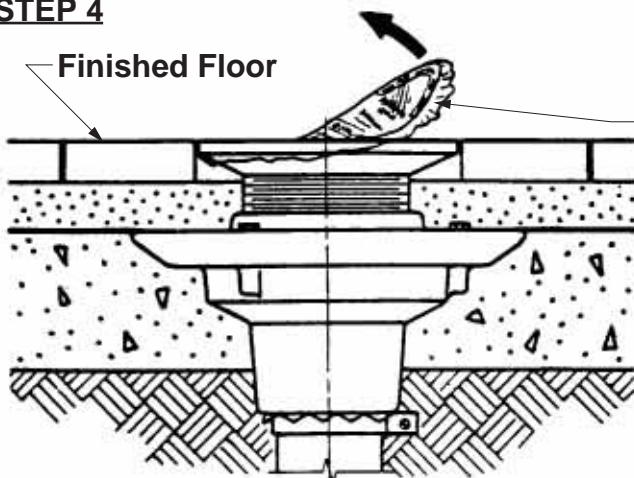


CUT PLASTIC ON UNDERSIDE OF HEAD ABOUT 1/2"(13) FROM TOP. REMOVE PORTION COVERING SHANK AND PRESS REMAINDER TO UNDERSIDE OF RIM. SCREW INTO BODY LEAVING TOP FILM AND SHIELD ON STRAINER

EXPOSED SHANK THREAD

STEP 4

DRAIN COMPLETELY INSTALLED



AFTER FINISHED FLOOR IS INSTALLED AND SET, TOP FILM AND SHIELD ARE REMOVED. A CLEAN, UNDAMAGED TOP IS EXPOSED, READY FOR USE.