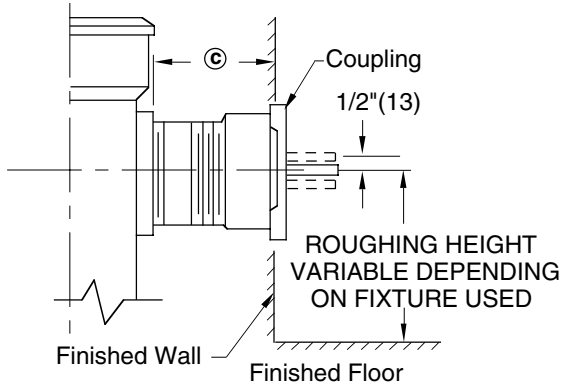
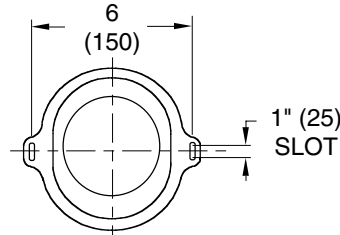


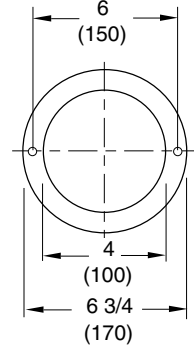
## TYPE NO. 2 NIPPLE AND COUPLING OUTLET CONNECTION



**SIDE VIEW**



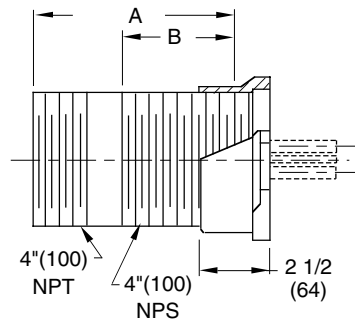
**FRONT VIEW**



**CLOSET OUTLET GASKET**

**NIPPLE LENGTHS AVAILABLE**

A	MIN	©	MAX
2 1/2(64)	2 3/4(70)	3	3 3/4(95)
3 1/4(83)	3(76)	4	4 1/2(115)
4 1/2(115)	4 1/4(110)	5	5 3/4(145)
5 1/4(135)	5(125)	6	6 1/2(165)
6 1/4(160)	6(150)	7	7 1/2(190)
7(180)	6 3/4(170)	8	8 1/4(210)
8 1/4(210)	8(205)	9	9 1/2(240)
10(255)	9 3/4(250)	11	11 1/4(285)
12(305)	11 3/4(300)	13	13 1/4(335)
15(380)	14 3/4(375)	16	16 1/4(415)
18(455)	17 3/4(450)	19	19 1/4(490)



**NOTES:**

The 4"(100) adjustable coupling is provided with vertical slotted ears which permits a 1/2"(13) adjustment up or down for variation in finished floor height.

Coupling should extend 5/16"(8) beyond finished wall.

Smith furnishes the Type No. 2 outlet connection for use with floor mounted back outlet bowls. The Type No. 2 connection and coupling arrangement whose length is specified by © dimension.

© dimension is the measurement from the face of the fitting to the finished wall.

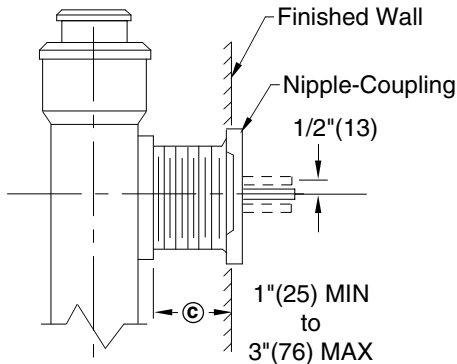
**NOTE ON CUTTING**

Nipple lengths shown in chart are standard lengths available. When a non-standard nipple length is required, the next longer size can be cut. A cutting charge will be added for nipples cut at plant.

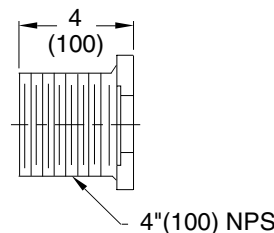
Nipples can be field cut if necessary. Sufficient length of straight thread (as shown in chart) is supplied for this purpose

**NOTE:** Dimensions shown in parenthesis are shown in millimeters.

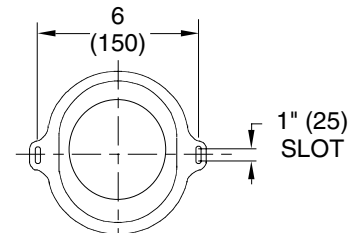
### FOR SMALLER © DIMENSION TYPE 2M COMBINATION NIPPLE COUPLING IN AVAILABLE WHEN SPECIFIED



**SIDE VIEW**



**SIDE VIEW**



**FRONT VIEW**

Type 2M is regularly furnished 4"(100) long, cut 1"(25) off end of coupling when used for © of 1 1/2"(38) or less.

DRAWING NUMBER: S0100-2  
 SIZE: A  
 SCALE: NONE  
 DATE: 7-24-86  
 APPROVED BY: JD  
 CHECKED BY: JD  
 DRAWN BY: CMB  
**TYPE NO. 2 OUTLET CONN.**  
 DIMENSIONS ARE SUBJECT TO MANUFACTURERS TOLERANCE AND CHANGE WITHOUT NOTICE

WE CAN ASSUME NO RESPONSIBILITY FOR USE OF SUPERSEDED OR VOID DATA

FIGURE NUMBER	B A	4-11-95 7-24-86	REVISED DIMENSIONS REVISED TYPESETTING	CMB CM	BY	CKD. BY	WEIGHT POUNDS	VOLUME CUBIC FEET	<b>FIGURE NUMBER TYPE NO. 2 OUTLET CONN.</b>
REV.	DATE		DESCRIPTION	BY	CKD. BY				