

**SMITH® JAY R. SMITH MFG. CO.**  
 DIVISION OF SMITH INDUSTRIES, INC.  
 POST OFFICE BOX 3237  
 MONTGOMERY, ALABAMA 36109-0237 (USA)  
 TEL: 334-277-8520 FAX: 334-272-7396 www.jrsmith.com

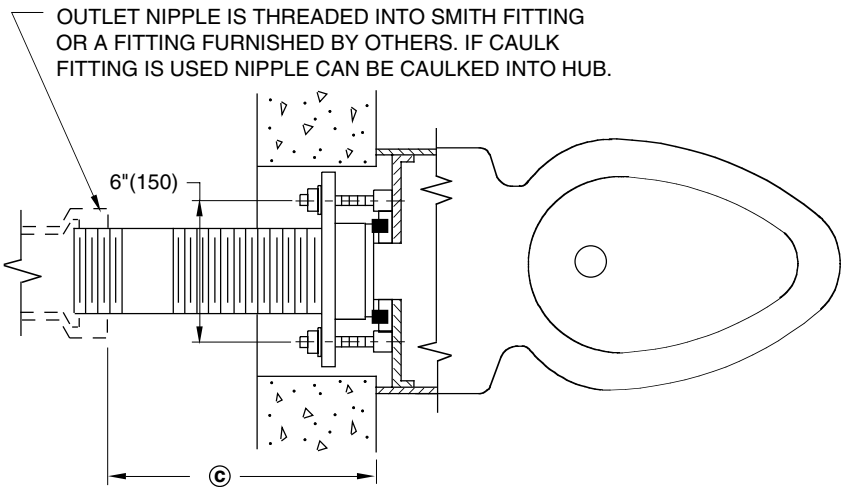
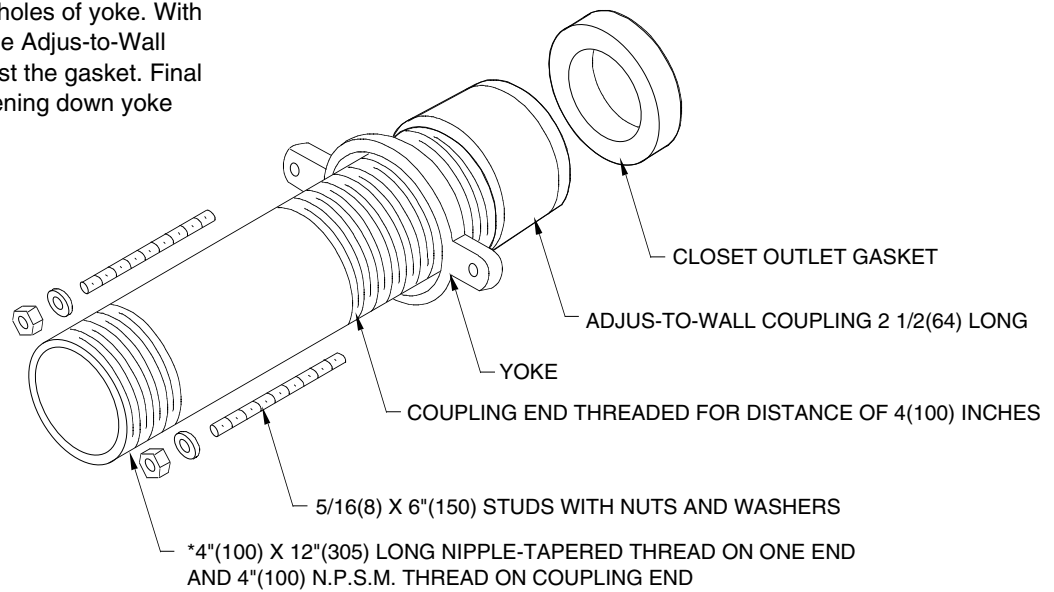


LOCATION

**OUTLET CONNECTION ASSEMBLY  
 FOR USE WITH PENAL TYPE FIXTURES  
 WITH OUTLET STUDS ON 6" (150) CENTERS**

**INSTALLATION**

Install as shown in plan view. 5/16(8) studs are screwed into outlet tapings on ware and gasket is placed in horn. Fixture is bolted to wall with bolts supplied by fixture manufacturer. The 5/16(8) outlet studs are passed through the holes of yoke. With fixture bolted snugly to wall, the Adjus-to-Wall coupling is rotated snug against the gasket. Final compression is made by tightening down yoke against back of coupling.



PLAN VIEW OF TYPICAL INSTALLATION

**NIPPLE LENGTHS AVAILABLE**

A	MIN	© MAX
2 1/2(64)	2 3/4(70)	3 3/4(95)
3 1/4(83)	3(76)	4 1/2(115)
4 1/2(115)	4 1/4(110)	5 3/4(145)
5 1/4(135)	5(125)	6 1/2(165)
6 1/4(160)	6(150)	7 1/2(190)
7(180)	6 3/4(170)	8 1/4(210)
8 1/4(210)	8(205)	9 1/2(240)
10(255)	9 3/4(250)	11 1/4(285)
12(305)	11 3/4(300)	13 1/4(335)
15(380)	14 3/4(375)	16 1/4(415)
18(455)	17 3/4(450)	19 1/4(490)

**NOTE:** Dimensions shown in parenthesis are in millimeters.  
 \*12(305) Long nipple regularly furnished. Other lengths are available when specified. See chart above for other lengths and © dimension min. and max.

DRAWING NUMBER: S-M74  
 SIZE: A  
 SCALE: NONE  
 DATE: 10-11-74  
 APPROVED BY: R.P.  
 CHECKED BY: R.P.  
 DRAWN BY: D.A.  
 FIGURE NUMBER: -M74

WE CAN ASSUME NO RESPONSIBILITY FOR USE OF SUPERSEDED OR VOID DATA

REV.	DATE	DESCRIPTION	BY	CKD. BY	WEIGHT POUNDS	VOLUME CUBIC FEET	FIGURE NUMBER
A	4-12-95	REVISED DIMENSIONS	CMB				-M74