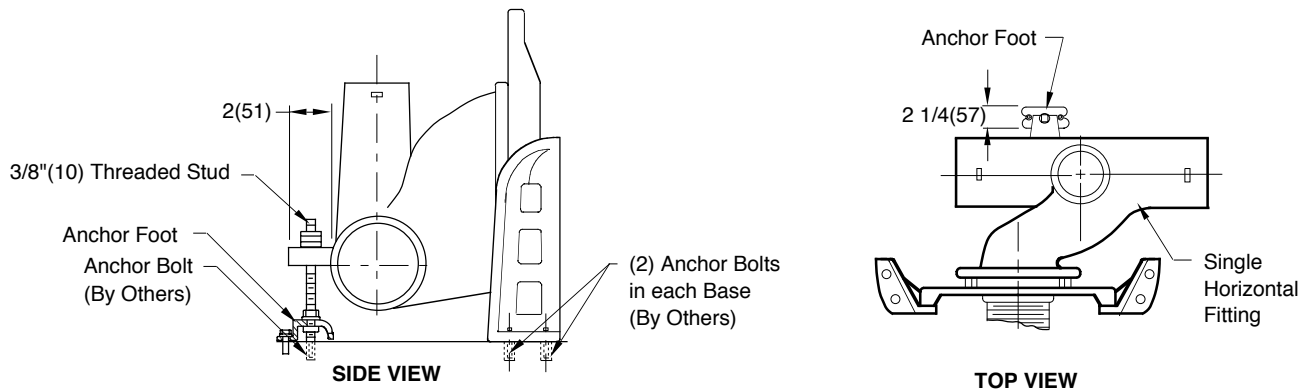


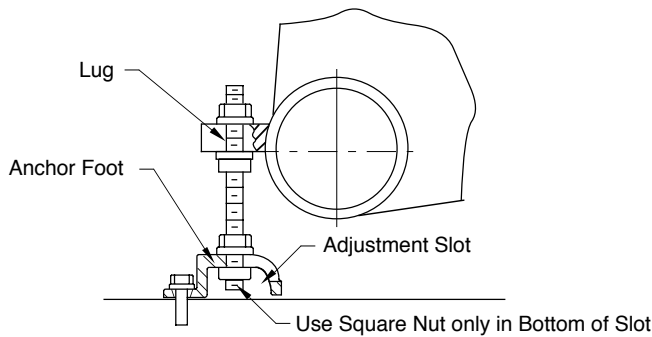
-M51 ANCHOR FOOT ASSEMBLY FOR USE WITH SINGLE HORIZONTAL FITTINGS

RECOMMENDED INSTALLATION

- (1) Set up fitting, faceplate and base support legs as shown in regular instruction (from trim box). Base supports must be anchored to floor with two (2) bolts in each base.
- (2) Install -M51 anchor assembly using integral lug on rear of fitting.
- (3) Anchor foot and hardware are supplied in separate trim bag. Foot is anchored to floor with two (2) bolts (as shown below). Rear lug on fitting is connected to foot using 3/8"(10) stud, nuts and washers from -M51 trim bag.



ENLARGED VIEW OF LUG AND ANCHOR FOOT



NOTE: Dimensions shown in parenthesis are in millimeters.


ORDERING NOTE

The -M51 anchor foot is furnished only when specified with single vertical offset fittings.

NOTE: Add Suffix -M51 to figure number selected.

NOTE: The -M51 anchor foot assembly is furnished as follows:

QTY.	DESCRIPTION	PART NO.
(1)	C.I. Anchor Foot	07805-10-0
(1)	3/8"(10) - 16 x 12(305) Z.P. Steel Stud	76227-86-6
(4)	3/8"(10) - 16 Z.P. Steel Sq. Nuts	76452-86-6
(3)	3/8"(10) Z.P. Steel Washers	76014-86-6
(1)	3/8"(10) Z.P. Steel Washers	70681-40-6

B					
DRAWING NUMBER	S-M51				
SIZE	A				
SCALE:	NONE				
DATE:	2-27-76				
APPROVED BY:	R.P.				
CHECKED BY:	WZ				
DRAWN BY:	JMA				
-M51	DIMENSIONS ARE SUBJECT TO MANUFACTURERS TOLERANCE AND CHANGE WITHOUT NOTICE WE CAN ASSUME NO RESPONSIBILITY FOR USE OF SUPERSEDED OR VOID DATA				
FIGURE NUMBER	B	9-29-98	Revised Dwg.	CMB	WEIGHT POUNDS VOLUME CUBIC FEET FIGURE NUMBER -M51
	A	4-12-95	Revised Dimensions	CMB	
	REV.	DATE	DESCRIPTION	BY	CKD. BY