



JAY R. SMITH MFG. CO.
 DIVISION OF SMITH INDUSTRIES, INC.
 POST OFFICE BOX 3237
 MONTGOMERY, ALABAMA 36109-0237 (USA)
 TEL: 334-277-8520 FAX: 334-272-7396 www.jrsmith.com

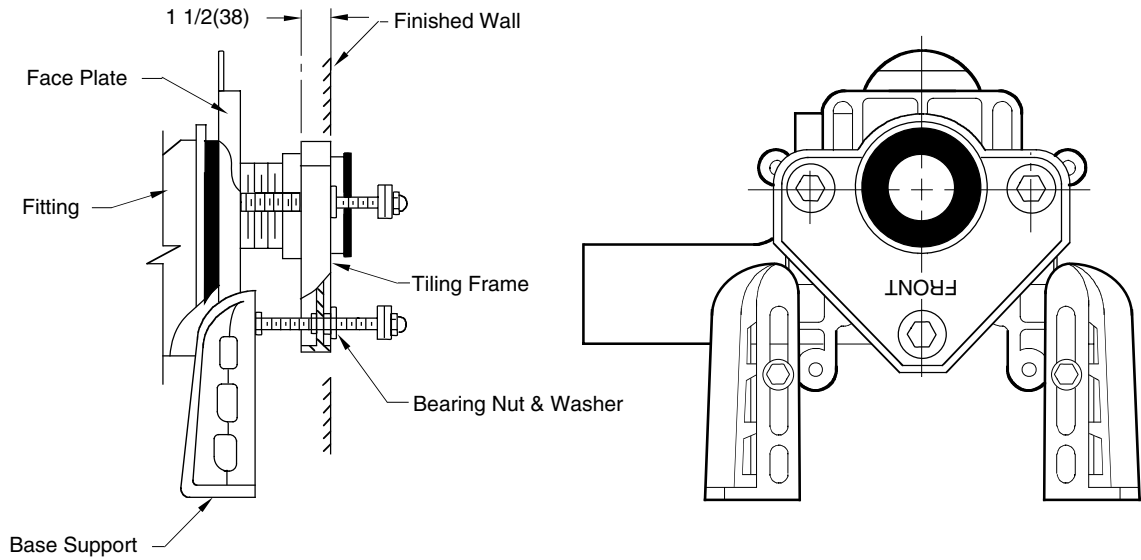


MEMBER OF:



LOCATION

TILING FRAME FOR BLOWOUT WATER CLOSETS



The purpose of this frame is to provide a rim for a flat even surface for the tiler to work to when he is applying the finished wall tile. The end result is an even finish around the frame, thus eliminating any irregular edges and uneven surfaces which can otherwise interfere with the installation of the water closet.

NOTE: Dimensions shown in parenthesis are in millimeters.

WE CAN ASSUME NO RESPONSIBILITY FOR USE OF SUPERSEDED OR VOID DATA

DIMENSIONS ARE SUBJECT TO MANUFACTURERS TOLERANCE AND CHANGE WITHOUT NOTICE

DRAWING NUMBER
S-M13 (300 Series)

SIZE
A

SCALE:
NONE

DATE:
12-3-96

APPROVED BY:
Chuck S.

CHECKED BY:
JCS

DRAWN BY:
EMB

-M13 (300 Series)

FIGURE NUMBER

REV.	DATE	DESCRIPTION	BY	CKD. BY

WEIGHT
POUNDS

VOLUME
CUBIC FEET

FIGURE NUMBER

-M13 (300 Series)