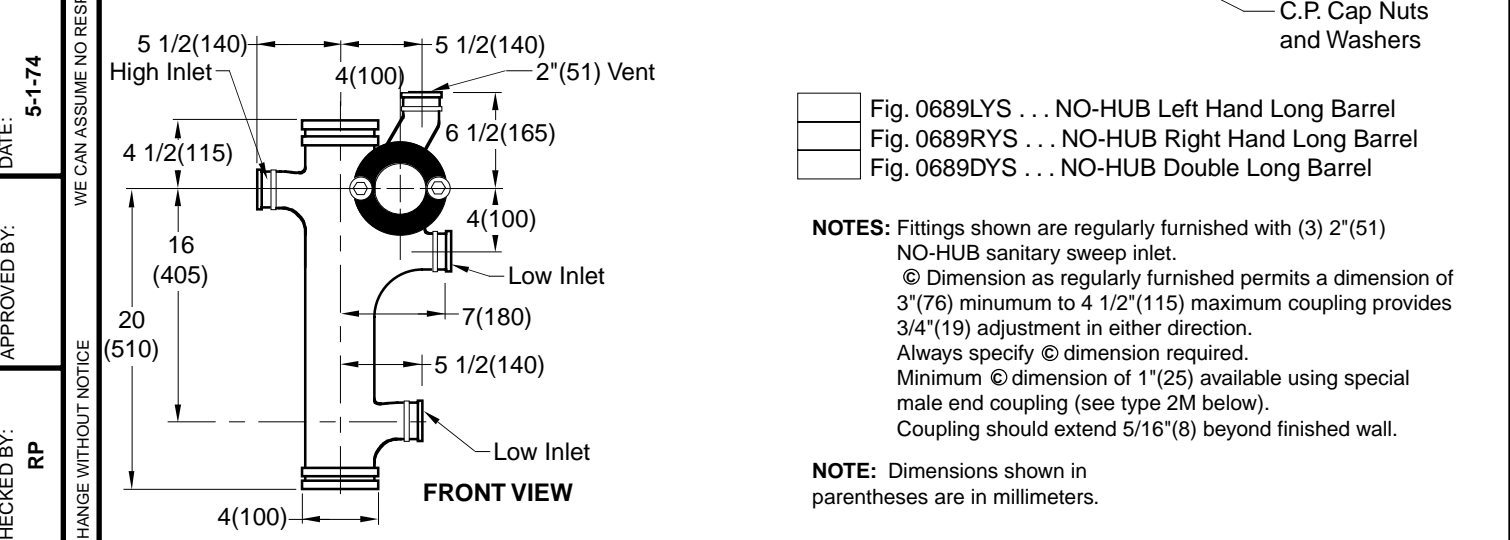
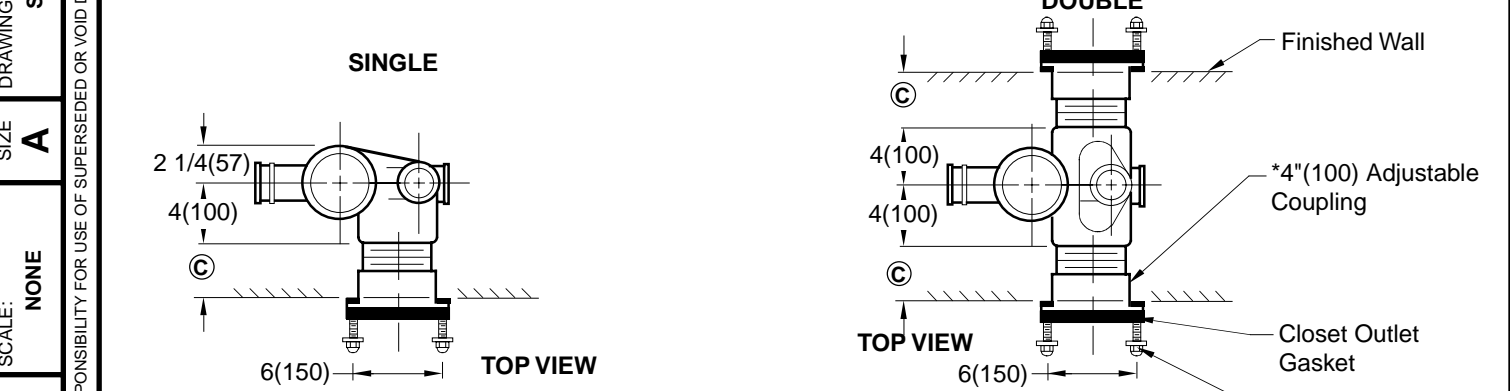
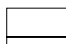
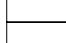



# NO-HUB VERTICAL OFFSET WASTE FITTING

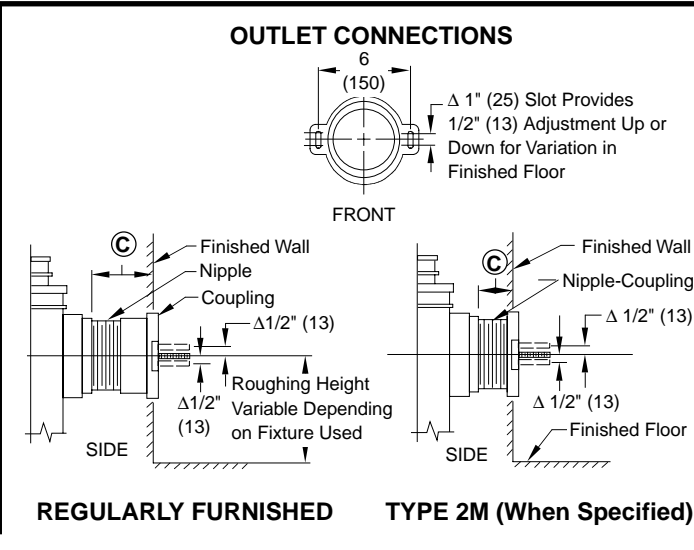
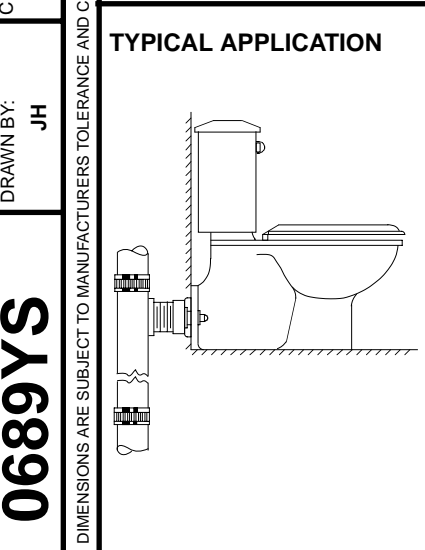
FOR USE WITH FLOOR MOUNTED BACK OUTLET WATER CLOSET



-  Fig. 0689LYS . . . NO-HUB Left Hand Long Barrel
-  Fig. 0689RYS . . . NO-HUB Right Hand Long Barrel
-  Fig. 0689DYS . . . NO-HUB Double Long Barrel

**NOTES:** Fittings shown are regularly furnished with (3) 2"(51) NO-HUB sanitary sweep inlet.  
 © Dimension as regularly furnished permits a dimension of 3"(76) minimum to 4 1/2"(115) maximum coupling provides 3/4"(19) adjustment in either direction.  
 Always specify © dimension required.  
 Minimum © dimension of 1"(25) available using special male end coupling (see type 2M below).  
 Coupling should extend 5/16"(8) beyond finished wall.

**NOTE:** Dimensions shown in parentheses are in millimeters.



NIPPLE LENGTHS AVAILABLE			
NIPPLE LENGTH	MIN	©	MAX
2 1/2 (64)	2 3/4 (70)		3 3/4 (95)
*3 1/4 (83)	3 (76)		4 1/2 (115)
4 1/2 (115)	4 1/4 (110)		5 3/4 (145)
5 1/4 (135)	5 (125)		6 1/2 (165)
6 1/4 (160)	6 (150)		7 1/2 (190)
7 (180)	6 3/4 (170)		8 1/4 (210)
8 1/4 (210)	8 (205)		9 1/2 (240)
10 (255)	9 3/4 (250)		11 1/4 (285)
12 (305)	11 3/4 (300)		13 1/4 (335)
15 (380)	14 3/4 (375)		16 1/4 (415)
18 (455)	17 3/4 (450)		19 1/4 (490)

\* Regularly Furnished

FIGURE NUMBER	<b>0689YS</b>						
	<b>0689YS</b>						
REV.	DATE	DESCRIPTION	BY	CKD. BY	WEIGHT POUNDS	VOLUME CUBIC FEET	FIGURE NUMBER
C	3-24-97	Added Millimeters	EMB	BS			
B	12-1-95	Update Notes	EMB	JCS			
A	11-14-94	Submittal Update	EMB	BS			

**0689YS**

DRAWING NUMBER: 0689YS, SIZE: A, SCALE: NONE, DATE: 5-1-74, APPROVED BY: RP, CHECKED BY: JH, DIMENSIONS ARE SUBJECT TO MANUFACTURERS TOLERANCE AND CHANGE WITHOUT NOTICE, WE CAN ASSUME NO RESPONSIBILITY FOR USE OF SUPERSEDED OR VOID DATA