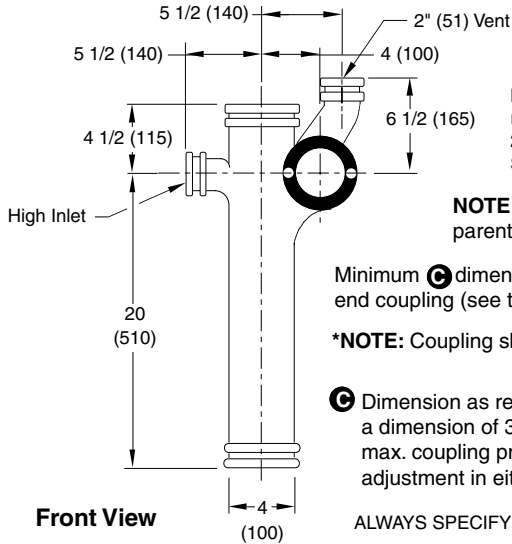


NO-HUB VERTICAL OFFSET WASTE FITTING

FOR USE WITH FLOOR MOUNTED BACK OUTLET CLOSET



NOTE: Fittings shown are regularly furnished with (1) 2" (51) NO-HUB Sanitary Sweep Inlet.




NOTE: Dimensions shown in parentheses are in millimeters.

Minimum \odot dimension of 1" (25) available using special male end coupling (see type 2M below)

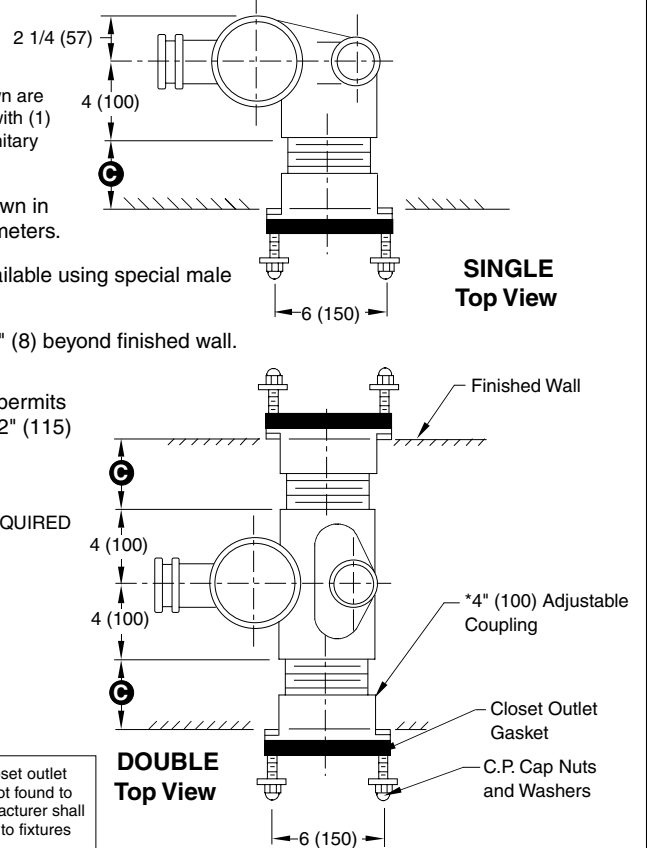
***NOTE:** Coupling should extend 5/16" (8) beyond finished wall.

\odot Dimension as regularly furnished permits a dimension of 3" (76) min. to 4 1/2" (115) max. coupling provides 3/4" (19) adjustment in either direction.

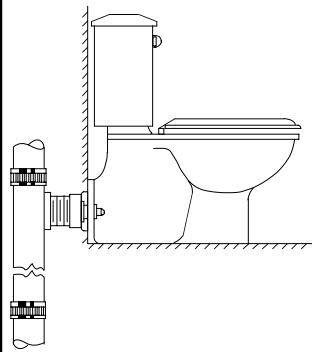
ALWAYS SPECIFY \odot DIMENSION REQUIRED

-  Fig. 0686LY ... NO-HUB LEFT HAND LONG BARREL
-  Fig. 0686RY ... NO-HUB RIGHT HAND LONG BARREL
-  Fig. 0686DY ... NO-HUB DOUBLE LONG BARREL

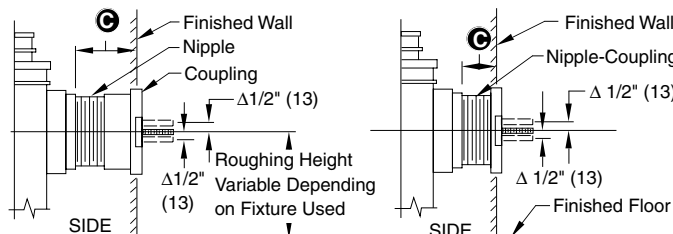
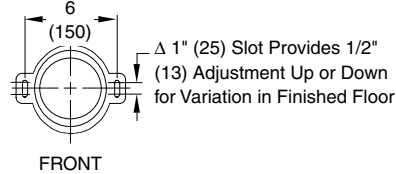
The water closet gasket regularly furnished is made of molded neoprene and designed to fit water closet outlet dimensions and configurations shown in ANSI Standard A112.19.2M-1982, Figure 13B. If gasket is not found to be compatible to fixture due to nonconformance of said fixture to ANSI A112.19.2M, then fixture manufacturer shall be consulted for a suitable gasket recommendation. Jay R. Smith assumes no liability for connections to fixtures which do not conform to these standards.



TYPICAL APPLICATION



OUTLET CONNECTIONS



NIPPLE LENGTHS AVAILABLE

NIPPLE LENGTH	MIN	\odot MAX
2 1/2 (64)	2 3/4 (70)	3 3/4 (95)
*3 1/4 (83)	3 (76)	4 1/2 (115)
4 1/2 (115)	4 1/4 (110)	5 3/4 (145)
5 1/4 (135)	5 (125)	6 1/2 (165)
6 1/4 (160)	6 (150)	7 1/2 (190)
7 (180)	6 3/4 (170)	8 1/4 (210)
8 1/4 (210)	8 (205)	9 1/2 (240)
10 (255)	9 3/4 (250)	11 1/4 (285)
12 (305)	11 3/4 (300)	13 1/4 (335)
15 (380)	14 3/4 (375)	16 1/4 (415)
18 (455)	17 3/4 (450)	19 1/4 (490)

* Regularly Furnished

B

DRAWING NUMBER
S0686Y

SIZE
A

SCALE:
NONE

DATE:
12-6-71

APPROVED BY:
RP

CHECKED BY:
RP

DRAWN BY:
RK

0686Y

FIGURE NUMBER

REV.	DATE	DESCRIPTION	BY	CKD. BY
B	4-12-96	Added Millimeters	EMB	
A	10-12-94	Submittal Update	CMB	BS

WEIGHT POUNDS	VOLUME CUBIC FEET	FIGURE NUMBER
		0686Y

WE CAN ASSUME NO RESPONSIBILITY FOR USE OF SUPERSEDED OR VOID DATA

DIMENSIONS ARE SUBJECT TO MANUFACTURERS TOLERANCE AND CHANGE WITHOUT NOTICE