



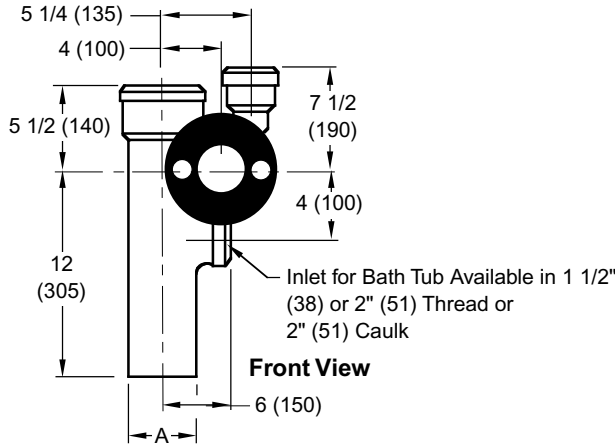
JAY R. SMITH MFG. CO.
 DIVISION OF SMITH INDUSTRIES, INC.
 POST OFFICE BOX 3237
 MONTGOMERY, ALABAMA 36109-0237 (USA)
 TEL: 334-277-8520 FAX: 334-272-7396 www.jrsmith.com



LOCATION

VERTICAL OFFSET WASTE FITTING WITH SIDE INLET

FOR USE WITH FLOOR MOUNTED BACK OUTLET CLOSET AND BACK OUTLET BATH TUB



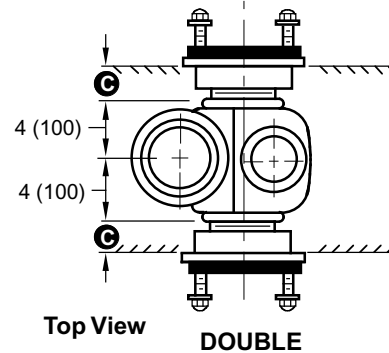
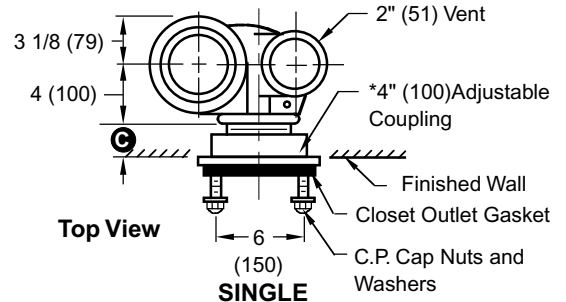
A (Pipe Size) = 4" (100)

- Fig. 0683L . . . LEFT HAND
- Fig. 0683R . . . RIGHT HAND
- Fig. 0683D . . . DOUBLE

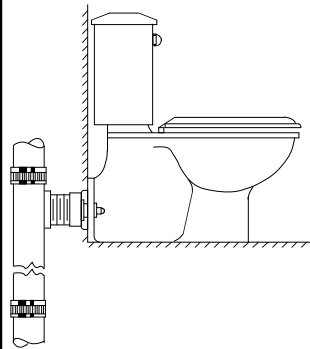
NOTE: Dimensions shown in parentheses are in millimeters.

C Dimension is regularly furnished 4" (100) long. Coupling provides 3/4" (19) adjustment in either direction.

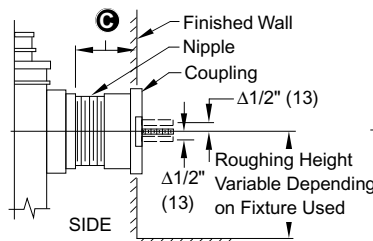
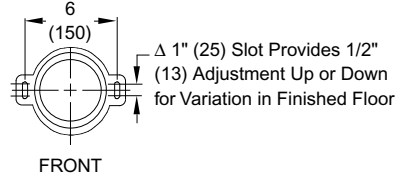
The water closet gasket regularly furnished is made of molded neoprene and designed to fit water closet outlet dimensions and configurations shown in ANSI Standard A112.19.2M-1982, Figure 13B. If gasket is not found to be compatible to fixture due to nonconformance of said fixture to ANSI A112.19.2M, then fixture manufacturer shall be consulted for a suitable gasket recommendation. Jay R. Smith assumes no liability for connections to fixtures which do not conform to these standards.



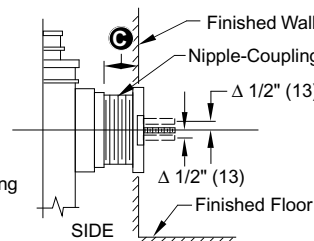
TYPICAL APPLICATION



OUTLET CONNECTIONS



REGULARLY FURNISHED



TYPE 2M (When Specified)

NIPPLE LENGTHS AVAILABLE

NIPPLE LENGTH	MIN	C	MAX
2 1/2 (64)	2 3/4 (70)		3 3/4 (95)
*3 1/4 (83)	3 (76)		4 1/2 (115)
4 1/2 (115)	4 1/4 (110)		5 3/4 (145)
5 1/4 (135)	5 (125)		6 1/2 (165)
6 1/4 (160)	6 (150)		7 1/2 (190)
7 (180)	6 3/4 (170)		8 1/4 (210)
8 1/4 (210)	8 (205)		9 1/2 (240)
10 (255)	9 3/4 (250)		11 1/4 (285)
12 (305)	11 3/4 (300)		13 1/4 (335)
15 (380)	14 3/4 (375)		16 1/4 (415)
18 (455)	17 3/4 (450)		19 1/4 (490)

* Regularly Furnished

DRAWING NUMBER
S0683

SIZE
A

SCALE:
NONE

DATE:
3-13-68

APPROVED BY:
RP

CHECKED BY:
RP

DRAWN BY:
RD

0683 SERIES

WE CAN ASSUME NO RESPONSIBILITY FOR USE OF SUPERSEDED OR VOID DATA

DIMENSIONS ARE SUBJECT TO MANUFACTURER'S TOLERANCE AND CHANGE WITHOUT NOTICE

FIGURE NUMBER

REV. DATE

4-11-96
9-29-94

Added Millimeters
Submittal Update

EMB BS
CMB BS
BY CKD. BY

WEIGHT
POUNDS

VOLUME
CUBIC FEET

FIGURE NUMBER

0683 SERIES