



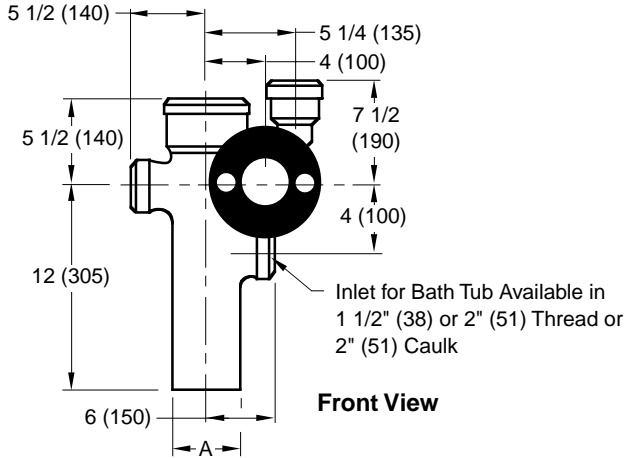
MEMBER OF:



LOCATION

# VERTICAL OFFSET WASTE FITTING WITH SIDE INLET

FOR USE WITH FLOOR MOUNTED BACK OUTLET CLOSET, LAVATORY AND BACK OUTLET BATH TUB



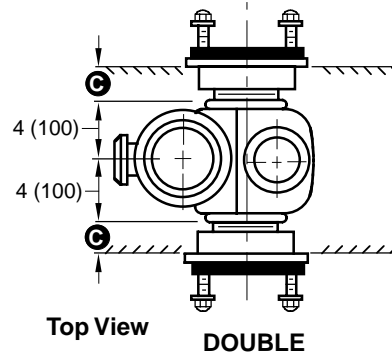
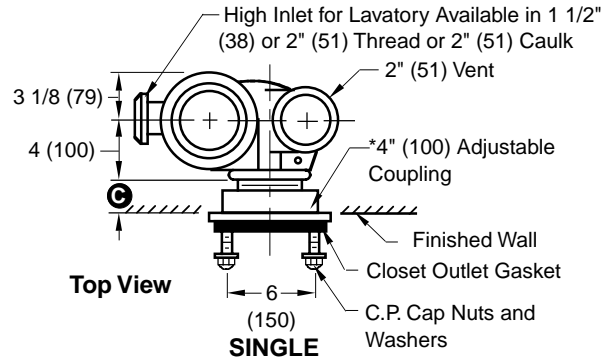
A (Pipe Size) = 4" (100)

**NOTE:** Regularly furnished with high and low auxiliary inlet, specify sizes and type.

- Fig. 0673L ... LEFT HAND
- Fig. 0673R ... RIGHT HAND
- Fig. 0673D ... DOUBLE

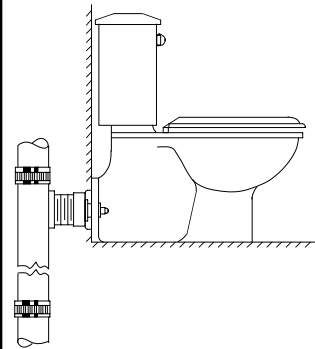
**NOTE:** Dimensions shown in parentheses are in millimeters.

**C** Dimension is regularly furnished 4" (100) long. Coupling provides 3/4" (19) adjustment in either direction.

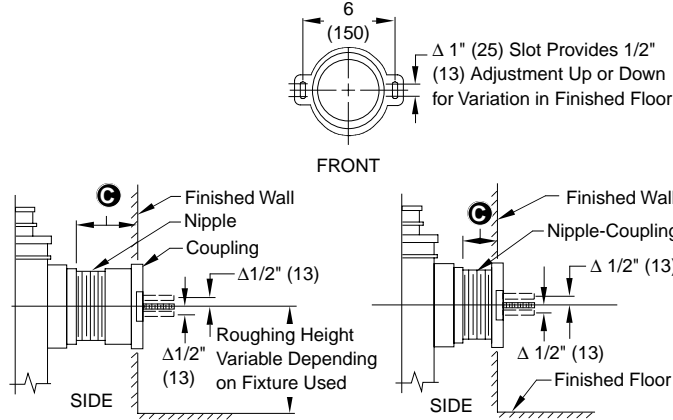


The water closet gasket regularly furnished is made of molded neoprene and designed to fit water closet outlet dimensions and configurations shown in ANSI Standard A112.19.2M-1982, Figure 13B. If gasket is not found to be compatible to fixture due to nonconformance of said fixture to ANSI A112.19.2M, then fixture manufacturer shall be consulted for a suitable gasket recommendation. Jay R. Smith assumes no liability for connections to fixtures which do not conform to these standards.

TYPICAL APPLICATION



OUTLET CONNECTIONS



NIPPLE LENGTHS AVAILABLE

NIPPLE LENGTH	MIN	MAX
2 1/2 (64)	2 3/4 (70)	3 3/4 (95)
*3 1/4 (83)	3 (76)	4 1/2 (115)
4 1/2 (115)	4 1/4 (110)	5 3/4 (145)
5 1/4 (135)	5 (125)	6 1/2 (165)
6 1/4 (160)	6 (150)	7 1/2 (190)
7 (180)	6 3/4 (170)	8 1/4 (210)
8 1/4 (210)	8 (205)	9 1/2 (240)
10 (255)	9 3/4 (250)	11 1/4 (285)
12 (305)	11 3/4 (300)	13 1/4 (335)
15 (380)	14 3/4 (375)	16 1/4 (415)
18 (455)	17 3/4 (450)	19 1/4 (490)

\* Regularly Furnished

DRAWING NUMBER: S0673  
 SIZE: A  
 SCALE: NONE  
 DATE: 3-13-68  
 APPROVED BY: RP  
 CHECKED BY: RP  
 DRAWN BY: RD  
 0673 SERIES  
 FIGURE NUMBER

WE CAN ASSUME NO RESPONSIBILITY FOR USE OF SUPERSEDED OR VOID DATA

DIMENSIONS ARE SUBJECT TO MANUFACTURER'S TOLERANCE AND CHANGE WITHOUT NOTICE

B	4-11-96	Added Millimeters	EMB	
A	9-29-94	Submittal Update	CMB	BS
REV.	DATE	DESCRIPTION	BY	CKD. BY

WEIGHT POUNDS	VOLUME CUBIC FEET

**FIGURE NUMBER**  
**0673 SERIES**