

G



**JAY R. SMITH MFG. CO.**  
 DIVISION OF SMITH INDUSTRIES, INC.  
 POST OFFICE BOX 3237  
 MONTGOMERY, ALABAMA 36109-0237 (USA)  
 TEL: 334-277-8520 FAX: 334-272-7396 www.jrsmith.com



MEMBER OF:

LOCATION

DRAWING NUMBER  
S0548FPSIZE  
ASCALE:  
NONEDATE:  
9-10-86APPROVED BY:  
CRCHECKED BY:  
JDDRAWN BY:  
CB

0548FP

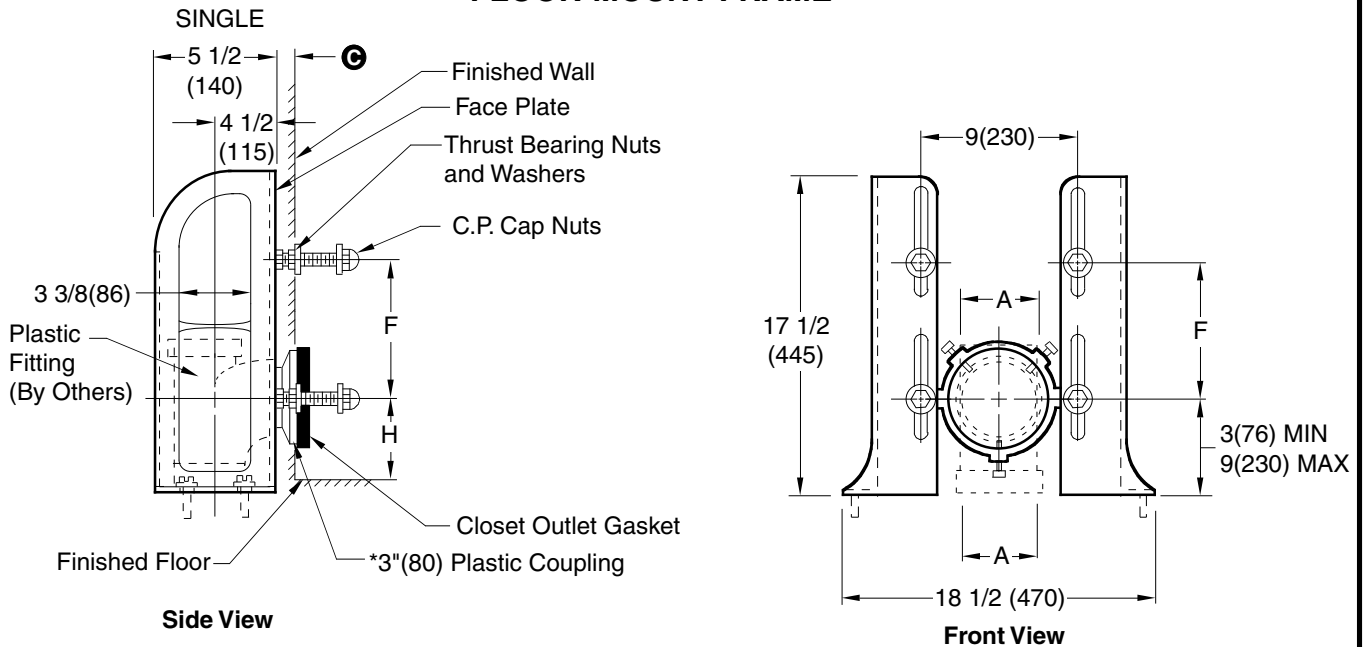
FIGURE  
NUMBER


WE CAN ASSUME NO RESPONSIBILITY FOR USE OF SUPERSEDED OR VOID DATA

DIMENSIONS ARE SUBJECT TO MANUFACTURERS TOLERANCE AND CHANGE WITHOUT NOTICE

## COMPACT FIXTURE SUPPORTS WITHOUT WASTE FITTINGS FOR RESIDENTIAL TYPE SIPHON JET WATER CLOSETS

### FLOOR-MOUNT FRAME



 Fig. 0548FP . . . 3"(80) PLASTIC CONNECTION

**NOTE:** Coupling should extend 5/16"(8) beyond finished wall.

**NOTE:** When using closet with bar hanger, add suffix-H to fig. number shown.

**NOTE:** See Rough-in table on reverse side for "F" and "H" dimensions and compatible fixtures.

**NOTE:** Base support must be firmly anchored to floor with four 1/2"(13) bolts provided by contractor.

**NOTE:** Longer closet studs available when required.

**\*NOTE:** ABS Regularly Furnished.

⊙ 1/2"(13) MIN to 1 1/4"(32) MAX as regularly furnished.

### INSTALLATION INSTRUCTIONS

- The center of the stack should be located by the 4 1/2"(115) dimension shown above.
- Attach fitting adaptor to back of face plates with the fixture studs. Set center of adaptor at specific "H" dimension to be used, then lock in place.
- Assemble fitting to the adaptor and lock in place with set screws.
- Place face plate assembly in proper position, mark location of the bolt holes in the slab, then secure face plates to the floor.
- Make up stack connection.
- Insert the coupling into the fitting and adjust it to extend 5/16"(8) beyond finished wall, then secure it to the fitting.
- Assemble the bearing nuts and washers to the fixture supporting studs. The fixture studs should extend 2 1/4"(57) beyond finished wall.
- Adjust bearing nuts so that washers extend 1/16"(2) beyond finished wall.
- After wall is erected, remove any plaster grout from fixture studs, bearing nuts, washers and coupling.
- Place gasket in closet recess and set closet on studs protruding from the wall, making sure that closet outlet is centered on coupling.
- Place fiber washers on studs. Apply the two bottom and top left cap nuts, tighten securely. Apply the top right cap nut hand tight and snug up 1/4 turn with wrench.

**NOTE:** When installing closet with bar hanger support follow the same instructions as above, except that the hanger plate should be mounted on the top fixture studs. Adjust the top bearing nuts so that the face of the hanger extends 1/16"(2) beyond the finished wall, then lock in place with hex nuts.

**NOTE:** SEE REVERSE SIDE FOR ROUGH-IN TABLE.

**NOTE:** Dimensions shown in parentheses are in millimeters.

REV.	DATE	DESCRIPTION	BY	CKD. BY
G T E	8-26-05 05/21/01 8-7-96	Revised Note Deleted 2" x 4" Added Millimeters	TBW JJ EMB	CL CL BS

WEIGHT POUNDS	VOLUME CUBIC FEET	FIGURE NUMBER
		<b>0548FP</b>

D



**JAY R. SMITH MFG. CO.®**  
 DIVISION OF SMITH INDUSTRIES, INC.  
 POST OFFICE BOX 3237  
 MONTGOMERY, ALABAMA 36109-0237 (USA)  
 TEL: 334-277-8520 FAX: 334-272-7396 www.jrsmith.com



MEMBER OF:



LOCATION

# ROUGH-IN TABLE FOR RESIDENTIAL WATER CLOSETS

## DIMENSION "H" ROUGH-IN HEIGHTS

FIXTURE MFG.	NAME	NUMBER	F	H
AM. STD.	GLENWALL	2093.100	7 1/2 (190)	4 1/8 (105)
CRANE	REXMONT	3-217	7 1/2 (190)	4 (100)
ELJER	WALFORD	091-7925, 7926, 7928, 7933	7 1/2 (190)	6 3/4 (170)

**NOTE:** The rough-in dimensions listed on this drawing are based on current information available to Jay R. Smith by the fixture manufacturers. We recommend that you verify these dimensions with the fixture manufacturer. We will not accept responsibility for rough-in dimension changes by the fixture manufacturer.

**NOTE:** Dimensions shown in parentheses are in millimeters.

DRAWING NUMBER  
S0500BSSIZE  
ASCALE:  
NONEDATE:  
1-24-86APPROVED BY:  
SBCHECKED BY:  
JDDRAWN BY:  
CM

0500 SERIES

FIGURE NUMBER

WE CAN ASSUME NO RESPONSIBILITY FOR USE OF SUPERSEDED OR VOID DATA  
DIMENSIONS ARE SUBJECT TO MANUFACTURERS TOLERANCE AND CHANGE WITHOUT NOTICE

REV.	DATE	DESCRIPTION	BY	CKD. BY	WEIGHT POUNDS	VOLUME CUBIC FEET	FIGURE NUMBER
D	1-27-06	Added NOTE to BS	RN	CL			0500 SERIES
C	8-26-05	Revised Table	TBW	CL			
B	8-1-96	Added Millimeters	EMB	BS			
A	7-20-93	Submittal Update	EMB	BS			