

COMPACT FIXTURE SUPPORTS WITHOUT WASTE FITTINGS FOR RESIDENTIAL TYPE SIPHON JET WATER CLOSETS

STUD-MOUNT FRAME

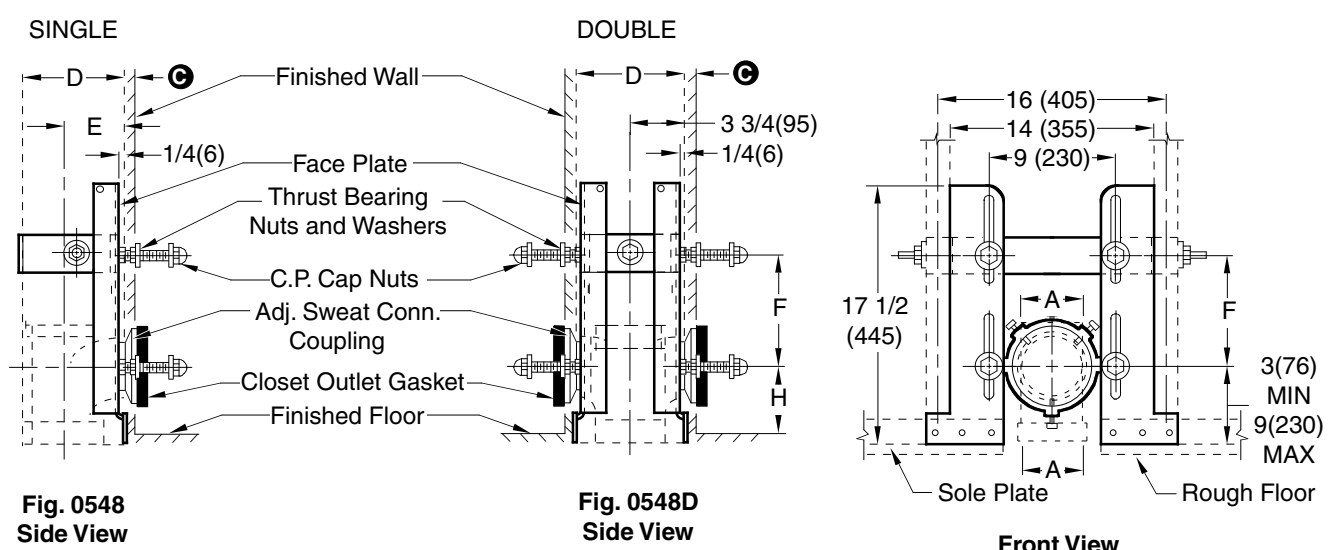


Fig.	A SIZE	D STUD	E
0548-3	3(80)	2 x 6	4(100)
0548-4	4(100)	2 x 8	5(125)
0548P	3(80)	2 x 8	4 1/2(115)

- Fig. 0548-3 . . . 3"(80) Copper Sweat
- Fig. 0548-4 . . . 4"(100) Copper Sweat
- Fig. 0548P . . . 3"(80) Plastic Connection
- Fig. 0548D-3 . . . 3"(80) Copper Sweat

NOTE: Coupling should extend 5/16"(8) beyond finished wall.

NOTE: When using closet with bar hanger, add suffix-H to Fig. Numbers shown.

NOTE: See roughing-in table on reverse side for "F" and "H" dimensions and list of compatible fixtures. Double support for use with gravity flush tank type water closets only.

NOTE: Longer closet studs and couplings available when required.

⊙ 1/2"(13) MIN to 1 1/4"(32) MAX as regularly furnished

INSTALLATION INSTRUCTIONS

- A. Center stack between two studs back "E" dimension (shown in table) from stud faces. 0548D must be centered in sole plate.
- B. Cut out hole in sole plate and floor for stack.
- C. To determine the height of the stack in relation to the finished floor, find specific "H" dimension to be used, then measure down from centerline of closet outlet 2 15/16"(75) for 3"(80) size and 3 15/16"(100) for 4"(100) size.
- D. Make up stack connection.
- E. Attach copper fitting adaptor and reinforcing strap to the back of the face plates by means of the fixture studs, then place assembly against copper fitting and lock in place with set screws.
- F. Face plate should now be nailed to sole plate.
- G. The two vertical studs are set into place then drilled for permanently anchoring the reinforcing strap by means of the stud bolts, nuts and washers.
- H. Insert the coupling into the fitting and adjust it to extend 5/16"(8) beyond finished wall, then solder into place.
- I. Assemble the bearing nuts and washers to the fixture supporting studs. The fixture studs should extend 2 1/4"(57) beyond finished wall.
- J. Adjust the bearing nuts so that washers extend 1/16"(2) beyond finished wall.
- K. After wall is erected, remove any plaster grout touching the fixture studs, bearing nuts, washers and coupling.
- L. Place gasket in closet recess and set closet on studs protruding from wall making sure closet outlet is centered on coupling.
- M. Place fiber washers on studs. Apply the two bottom and top left cap nuts, tighten securely. Apply the top right cap nut hand tight and snug up 1/4 turn with wrench.

NOTE: When installing closet with bar hanger support follow the same instructions as above, except that the hanger plate should be mounted on the top fixture studs. Adjust the top bearing nuts so that the face of the hanger extends 1/16"(2) beyond the finished wall, then lock in place with hex nuts.

NOTE: SEE REVERSE SIDE FOR ROUGH-IN TABLE. **NOTE:** Dimensions shown in parentheses are in millimeters.

DRAWING NUMBER S0548
SIZE A
SCALE: NONE
DATE: 1-47-86
APPROVED BY: SB
CHECKED BY: JD
DRAWN BY: CM
FIGURE NUMBER 0548

WE CAN ASSUME NO RESPONSIBILITY FOR USE OF SUPERSEDED OR VOID DATA
DIMENSIONS ARE SUBJECT TO MANUFACTURERS TOLERANCE AND CHANGE WITHOUT NOTICE

REV.	DATE	DESCRIPTION	BY	CKD. BY	WEIGHT POUNDS	VOLUME CUBIC FEET	FIGURE NUMBER
F	1-27-06	Revised Note & Removed Note	RN	CL			0548
E	8-26-05	Revised Note	TBW	CL			
D	3-26-97	Added -# after Fig. No.	CMD	BS			
C	8-5-96	Added Millimeters	EMB	BS			

D



JAY R. SMITH MFG. CO.®
 DIVISION OF SMITH INDUSTRIES, INC.
 POST OFFICE BOX 3237
 MONTGOMERY, ALABAMA 36109-0237 (USA)
 TEL: 334-277-8520 FAX: 334-272-7396 www.jrsmith.com



MEMBER OF:



LOCATION

ROUGH-IN TABLE FOR RESIDENTIAL WATER CLOSETS

DIMENSION "H" ROUGH-IN HEIGHTS

FIXTURE MFG.	NAME	NUMBER	F	H
AM. STD.	GLENWALL	2093.100	7 1/2 (190)	4 1/8 (105)
CRANE	REXMONT	3-217	7 1/2 (190)	4 (100)
ELJER	WALFORD	091-7925, 7926, 7928, 7933	7 1/2 (190)	6 3/4 (170)

NOTE: The rough-in dimensions listed on this drawing are based on current information available to Jay R. Smith by the fixture manufacturers. We recommend that you verify these dimensions with the fixture manufacturer. We will not accept responsibility for rough-in dimension changes by the fixture manufacturer.

NOTE: Dimensions shown in parentheses are in millimeters.

DRAWING NUMBER
S0500BS

SIZE
A

SCALE:
NONE

DATE:
1-24-86

APPROVED BY:
SB

CHECKED BY:
JD

DRAWN BY:
CM

WE CAN ASSUME NO RESPONSIBILITY FOR USE OF SUPERSEDED OR VOID DATA

DIMENSIONS ARE SUBJECT TO MANUFACTURERS TOLERANCE AND CHANGE WITHOUT NOTICE

0500 SERIES

FIGURE NUMBER

D	1-27-06	Added NOTE to BS	RN	CL
C	8-26-05	Revised Table	TBW	CL
B	8-1-96	Added Millimeters	EMB	BS
A	7-20-93	Submittal Update	EMB	BS
REV.	DATE	DESCRIPTION	BY	CKD. BY

WEIGHT POUNDS	VOLUME CUBIC FEET	FIGURE NUMBER 0500 SERIES
------------------	----------------------	-------------------------------------