



LOCATION

FLOOR ACCESS COVERS

ROUND FLANGED HOUSING WITH HEAVY DUTY CAST IRON COVER

FUNCTION: Used to cover cleanouts, valves, cocks, etc. High anchor flange permits use in areas surfaced with concrete or other poured materials. Low anchor flange is used with a ring of concrete poured below the surface for non-surfaced areas and areas surfaced with asphalt paving. Housing is completely free of piping so that no loading is transmitted to the pipe.

NOTE: For use with 6" (150) & 8" (200) size Fig. 4283 & 4293 Cleanout Ferrules.

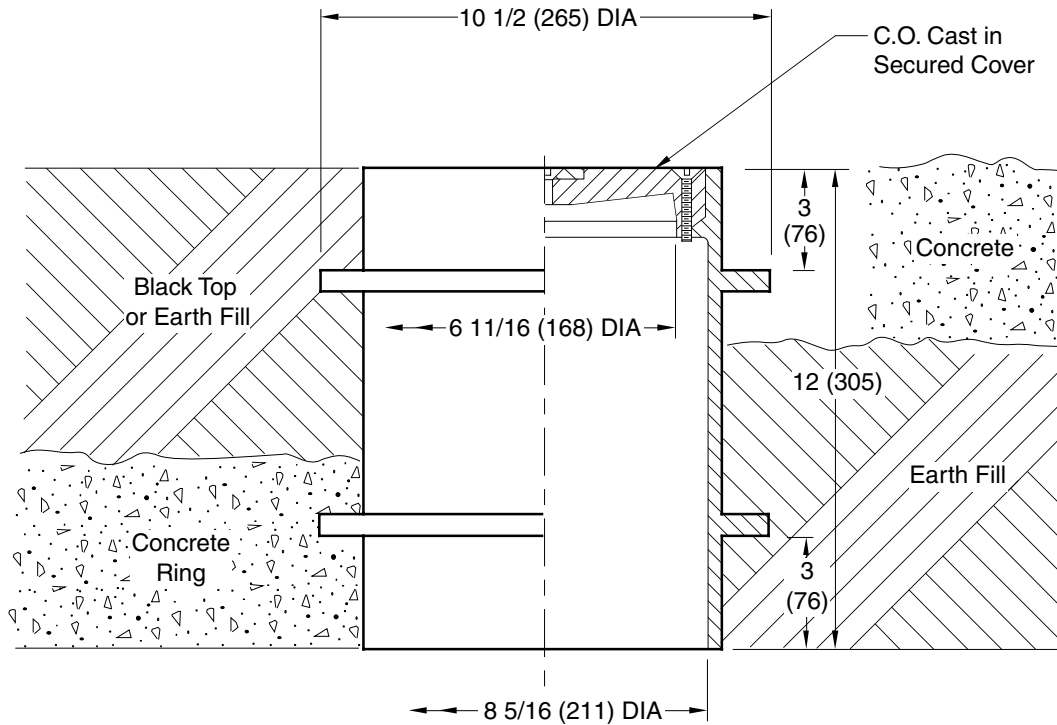


Fig. 4881

REGULARLY FURNISHED:
 Duco Cast Iron Double Flanged Body with Heavy duty Secured Scoriated Cast Iron Cover with Lifting Device.

VARIATIONS:
 Vandal Proof Screws -U
 Cover Cast with Words
 "Gas Shut-Off -GSO or
 "Water Shut-Off -WSO

OPTIONAL MATERIALS:
 Galvanized -G

NOTE: Dimensions shown in parentheses are in millimeters.

DRAWING NUMBER
S4881

SIZE
A

SCALE:
NONE

DATE:
5-29-08

APPROVED BY:
JM

CHECKED BY:
CL

DRAWN BY:
RN

FIGURE NUMBER
4881

WE CAN ASSUME NO RESPONSIBILITY FOR USE OF SUPERSEDED OR VOID DATA

DIMENSIONS ARE SUBJECT TO MANUFACTURERS TOLERANCE AND CHANGE WITHOUT NOTICE

REV.	DATE	DESCRIPTION	BY	CKD. BY

WEIGHT
POUNDS

VOLUME
CUBIC FEET

FIGURE NUMBER
4881