

B



JAY R. SMITH MFG. CO.®
 DIVISION OF SMITH INDUSTRIES, INC.
 POST OFFICE BOX 3237
 MONTGOMERY, ALABAMA 36109-0237 (USA)
 TEL: 334-277-8520 FAX: 334-272-7396 www.jrsmith.com



MEMBER OF:

LOCATION

FLOOR ACCESS COVERS

ROUND FLANGED HOUSING WITH HEAVY DUTY CAST IRON COVER

FUNCTION: Used to cover cleanouts, valves, cocks, etc. High anchor flange permits use in areas surfaced with concrete or other poured materials. Low anchor flange is used with a ring of concrete poured below the surface for non-surfaced areas and areas surfaced with asphalt paving. Housing is completely free of piping so that no loading is transmitted to the pipe.

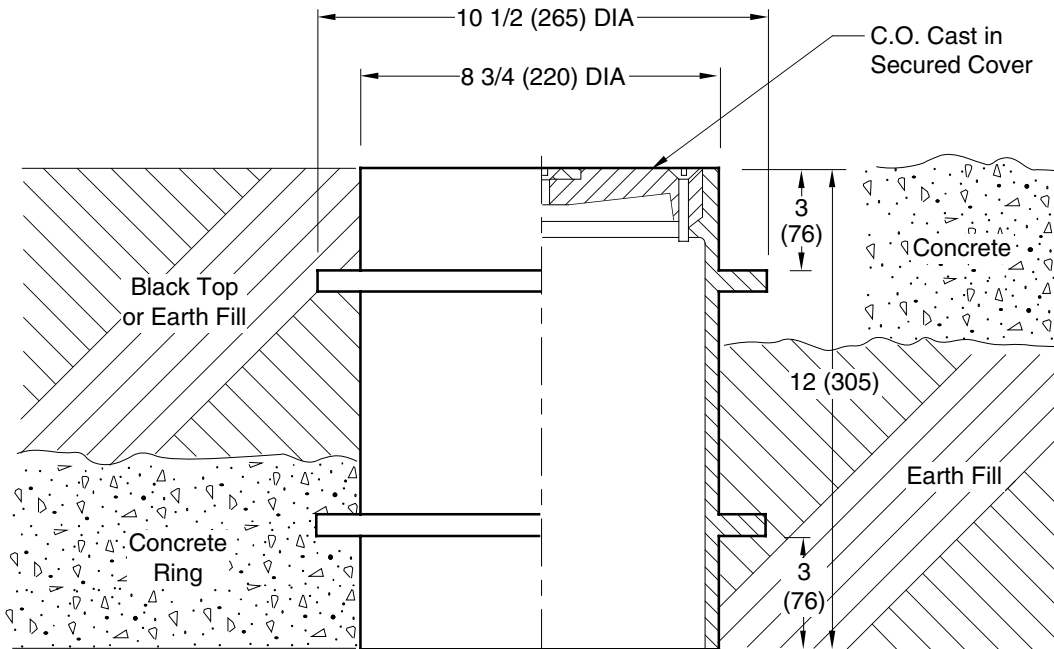


Fig. 4880

REGULARLY FURNISHED:
 Duco Cast Iron Double Flanged Body with Heavy duty Secured Scoriated Cast Iron Cover with Lifting Device.

VARIATIONS:
 Vandal Proof Screws -U
 Cover Cast with Words
 "Gas Shut-Off -GSO or
 "Water Shut-Off -WSO

OPTIONAL MATERIALS:
 Galvanized -G

NOTE: Dimensions shown in parentheses are in millimeters.

DRAWING NUMBER

S4880

SIZE

A

SCALE:

NONE

DATE:

2-10-86

APPROVED BY:

JD

CHECKED BY:

CR

DRAWN BY:

CM

WE CAN ASSUME NO RESPONSIBILITY FOR USE OF SUPERSEDED OR VOID DATA

4880

FIGURE NUMBER

B
A

1-23-96
1-11-95

Added Millimeters
Submittal Update

EMB
EMB

BS
BS

WEIGHT
POUNDS

VOLUME
CUBIC FEET

FIGURE NUMBER

4880

REV.

DATE

DESCRIPTION

BY

CKD. BY