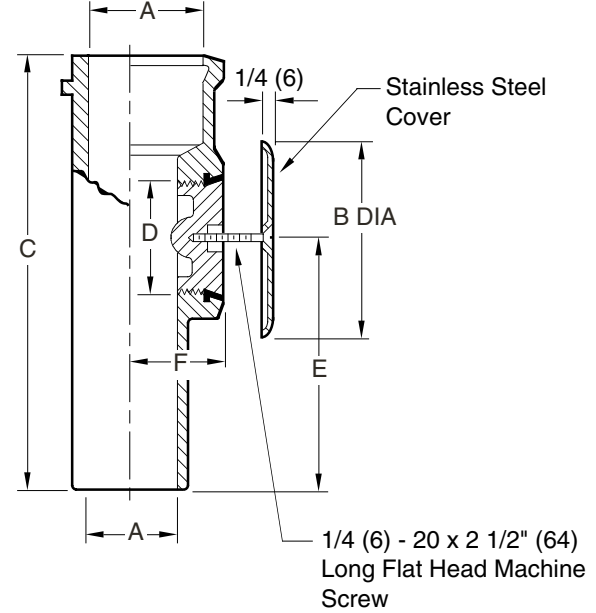
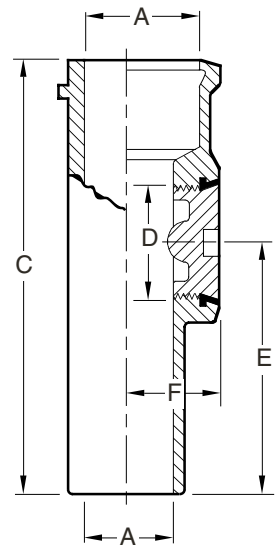


CLEANOUT TEES

WITH COUNTERSUNK PLUG AND ROUND ACCESS COVER

FUNCTION: Used in concealed drainage lines where a cleanout is desired. Removable face-of-wall cover allows easy access to closure plug.



- | | |
|---|--|
| <p>LESS COVER AND SCREW</p> <input type="checkbox"/> Fig. 4510S GASKET SEAL - IRON PLUG
<input type="checkbox"/> Fig. 4511S GASKET SEAL - BRONZE PLUG
<input type="checkbox"/> Fig. 4512S TAPER THREAD - BRONZE PLUG | <p>WITH COVER AND SCREW</p> <input type="checkbox"/> Fig. 4530S
<input type="checkbox"/> Fig. 4531S
<input type="checkbox"/> Fig. 4532S |
|---|--|

A SIZE	B DIA	C	D SIZE	E	F
02 (50)	4 1/4 (110)	10 1/2 (265)	1 1/2 (38)	6 1/4 (160)	2 (51)
03 (80)	5 1/2 (140)	11 3/4 (300)	2 1/2 (64)	7 (180)	2 1/2 (64)
04 (100)	5 1/2 (140)	12 (305)	3 1/2 (89)	7 (180)	3 (76)
05 (125)	7 (180)	*13 (330)	4 1/2 (115)	8 1/2 (215)	4 (100)
06 (150)	9 1/4 (235)	16 (405)	6 (150)	9 (230)	4 1/2 (115)

* This Dimension becomes 15 (380) for the 4512 and 4532.

Spigot Outlet Sized for Service Weight and/or NO-HUB

REGULARLY FURNISHED:
 Duco Cast Iron Cleanout Tee and Countersunk Plug with Stainless Steel Round Cover and Screw as Indicated by Figure Number Selected.

- VARIATIONS:**
- Longer Center Screw (Specify Length)
 - "T" Handle Plug -TP (Plug Tapped 1/4" (6) -20 Thread)
 - Vandal Proof Screw -U (Fig. 4530 Series)
 - Y NO-HUB Both Ends 2 (50), 3 (80), & 4" (100) sizes only

- OPTIONAL MATERIALS:**
- Polished Bronze Cover -PB
 - Prime Coated Steel Cover -PC

NOTE: Dimensions shown in parentheses are in millimeters.

DRAWING NUMBER S4510
 SIZE A
 SCALE: NONE
 DATE: 2-16-70
 APPROVED BY: JM
 CHECKED BY: RP
 DRAWN BY: RK
4510, 4530 SERIES
 DIMENSIONS ARE SUBJECT TO MANUFACTURERS TOLERANCE AND CHANGE WITHOUT NOTICE
 WE CAN ASSUME NO RESPONSIBILITY FOR USE OF SUPERSEDED OR VOID DATA

F E	11/04/03 3-22-95	Revised Variations Added Metric	JJ EMB	CL BS
REV.	DATE	DESCRIPTION	BY	CKD. BY

WEIGHT POUNDS	VOLUME CUBIC FEET
------------------	----------------------

FIGURE NUMBER
4510 SERIES
4530 SERIES