

# CLEANOUT TEE

## WITH COUNTERSUNK PLUG AND INTERNAL THREADING FOR TEST PLUG USE

**FUNCTION:** Used in concealed drainage lines where a cleanout is desired that allows the testing of piping above through the use of an internal threading inside the tee

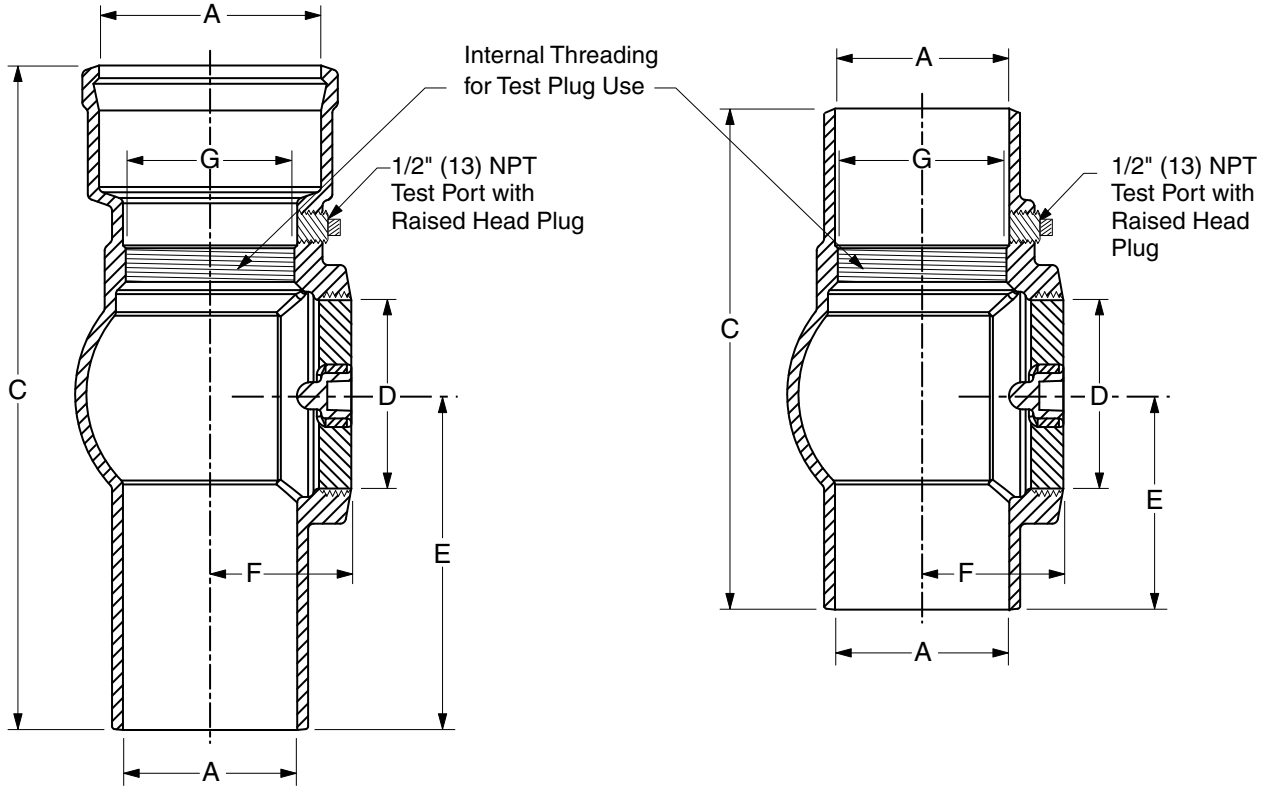


FIG. 4505S.....HUB and SPIGOT

FIG. 4505Y.....NO-HUB

A PIPE SIZE	C	D PLUG SIZE	E	F	G SIZE
03(75)	13 1/2(345)	3(76)	7 (180)	2 1/2(64)	2 1/2(64)
04(100)	14 3/4(375)	4(100)	7 1/2(190)	3 (76)	3 1/2(89)
06(150)	17(430)	6(150)	8 1/2(215)	4(100)	5(125)

A PIPE SIZE	C	D PLUG SIZE	E	F	G SIZE
03(75)	9 1/4(235)	3(76)	3 3/4(95)	2 1/2(64)	2 1/2(64)
04(100)	10 1/2(265)	4(100)	4 1/2(115)	3(76)	3 1/2(89)
06(150)	14(355)	6(150)	6 1/4(160)	4(100)	5(125)

Spigot Outlet Sized for Service Weight and/or NO-HUB.

**REGULARLY FURNISHED:**  
 Duco Cast Iron Cleanout Tee with Internal Threading, 1/2(13) NPT Test Port with Raised Head Plug and Countersunk Taper Threaded Bronze Plug.

**VARIATIONS:**  
 Test Valve and Reference Gauge Kit - TK  
 Test Plug - TP

**OPTIONAL MATERIALS:**  
 Galvanized Cast Iron - G

NOTE: Dimensions shown in parentheses are in millimeters.

H  
 DRAWING NUMBER s4505  
 SIZE A  
 SCALE: NONE  
 DATE: 06/11/02  
 APPROVED BY: AM  
 CHECKED BY: CR  
 DRAWN BY: JJ  
**4505 SERIES**  
 DIMENSIONS ARE SUBJECT TO MANUFACTURERS TOLERANCE AND CHANGE WITHOUT NOTICE  
 WE CAN ASSUME NO RESPONSIBILITY FOR USE OF SUPERSEDED OR VOID DATA

REV.	DATE	DESCRIPTION	BY	CKD.
H	9-26-06	Changed Variations	RN	CL
G	9-7-06	Changed Variations	RN	CL
F	8-22-06	Added Variations & Optional	RN	CL
E	5-12-06	Changed Regularly Furnished	RN	CL

WEIGHT POUNDS	VOLUME CUBIC FEET

**FIGURE NUMBER**  
**4505 SERIES**



MEMBER OF:



LOCATION

# Typical Illustration of Fig. 4505 using the Internal Threading for the Testing of Piping Above

DRAWING NUMBER  
s4505 BS

SIZE  
A

SCALE:  
NONE

DATE:  
4-8-05

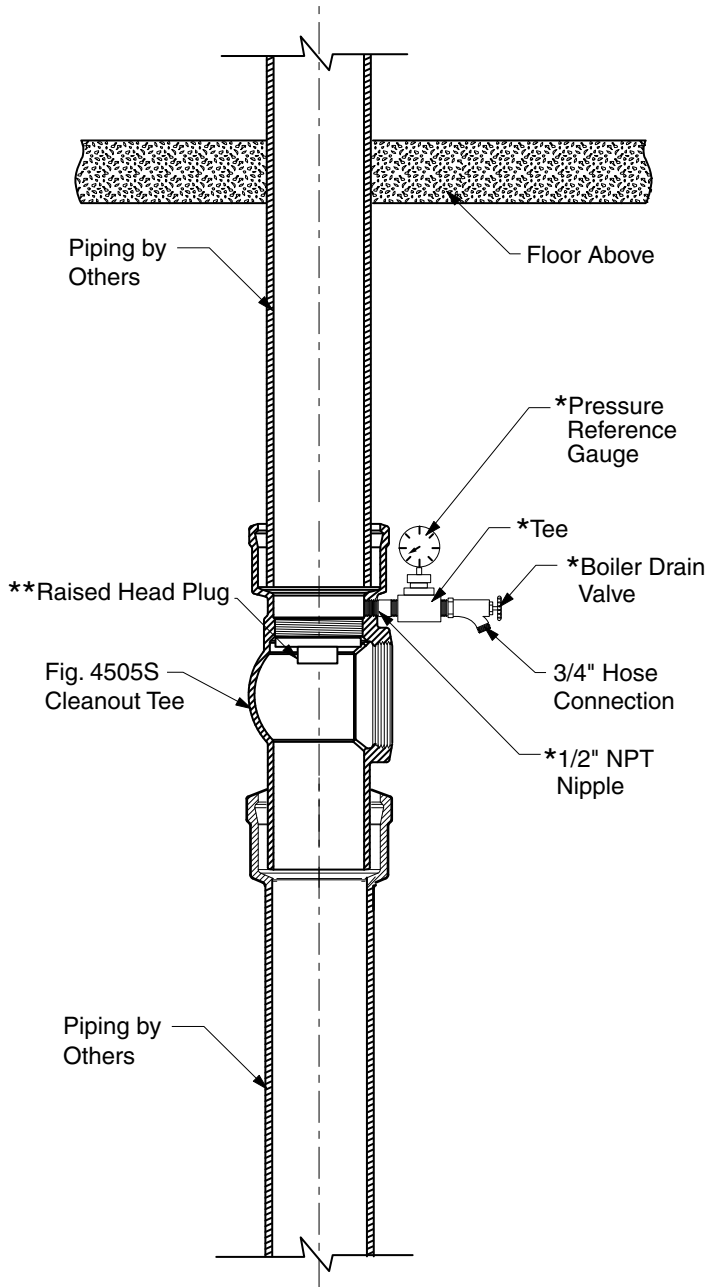
APPROVED BY:  
CEL

CHECKED BY:  
CL

DRAWN BY:  
RN

FIGURE NUMBER  
4505 BS

WE CAN ASSUME NO RESPONSIBILITY FOR USE OF SUPERSEDED OR VOID DATA



Suggested test procedures:

1. Remove existing cleanout plug at face of tee.
2. Install a raised head plug into the internal threading.
3. Remove plug from the test port connection.
4. Thread 1/2" NPT nipple with tee, pressure reference gauge and boiler drain valve into the test port.
5. Connect one end of a water hose to the boiler drain valve and the other end to a water supply and fill piping for testing. The boiler drain valve must be in the open position.
6. When piping is full of water, shut off the water supply and close the boiler drain valve.
7. When test is complete, disconnect the water hose from the water supply and place in a floor drain or other acceptable drainage point and open boiler drain valve to drain piping.
8. When piping is completely drained reverse steps 1 through 7.

**NOTE:** The Boss Tee can be used to test the piping system in the customary manner by installing a plug into the internal threading and filling the piping from the top.

\*Supplied when optional Test Valve and Reference Gauge Kit (-TK) is specified.  
 \*\*Supplied when optional Test Plug (-TP) is specified.

REV.	DATE	DESCRIPTION	BY	CKD.	WEIGHT POUNDS	VOLUME CUBIC FEET	FIGURE NUMBER
F	9-26-06	Changed Note	RN	CL			<b>4505 BS</b>
E	9-7-06	Added ** Note	RN	CL			
D	8-22-06	Changed Layout & Procedures	RN	CL			
		Changed Procedures & Add Note	RN	CL			
C	5-12-06		RN	CL			