

A



JAY R. SMITH CO.

PLUMBING & DRAINAGE PRODUCTS

959 Alness Street, North York, Ontario M3J 2J1

TEL: (416) 736-9610 FAX: (416) 736-3789

LOCATION

OIL INTERCEPTORS

LARGE CAPACITY - STEEL OIL INTERCEPTORS

FUNCTION: Large capacity oil interceptors are used in large garages, service areas and industrial plants where waste laden with oil and sediment must be intercepted. The intercepted oils are drawn off by gravity to a storage tank or container. Any sediment which is included in the discharge is collected in a large sediment bucket and periodically removed. Interceptors should not be located directly in traffic areas. If required, specify extra heavy duty traffic cover.

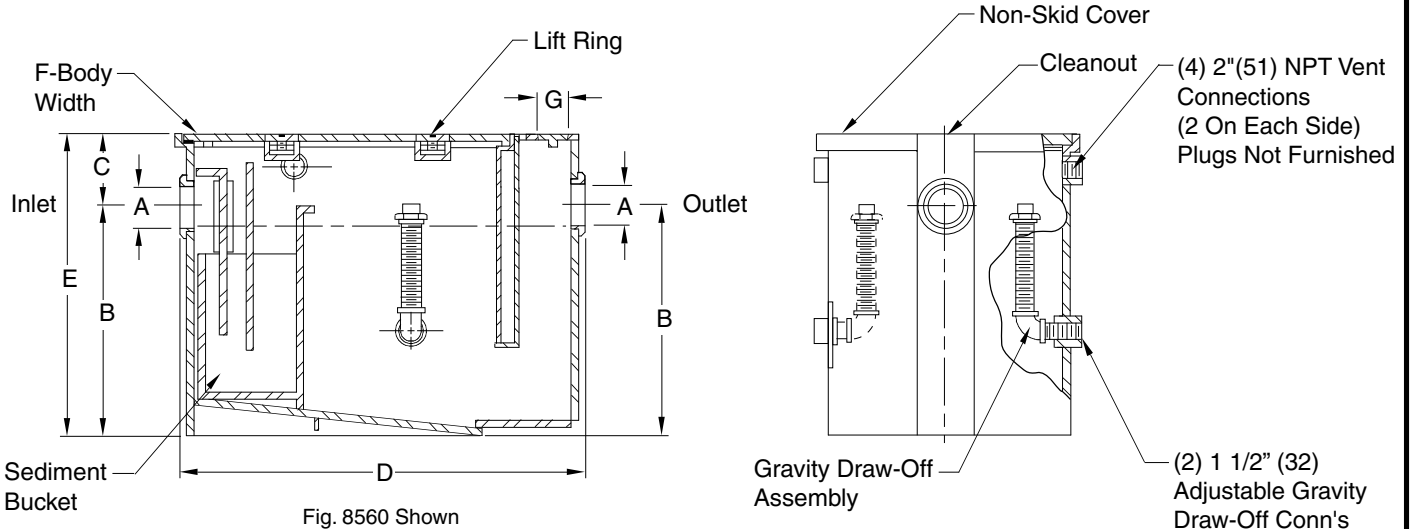


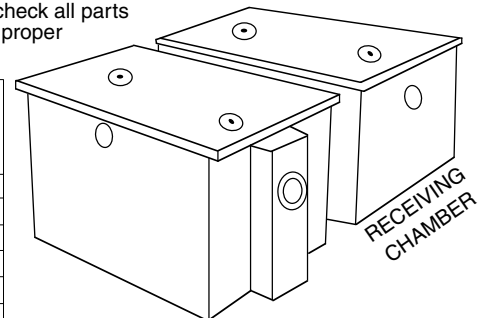
Fig. 8560 Shown

NOTE: Interceptor shall be vented on outlet side per local code requirements.

NOTE: It is the responsibility of the installer to check all parts (internal and external) to verify they are in their proper operating order and location.

PCN/ Fig. No.	GPM Flow Rate	Inlet and Outlet Size	Dimensions						C.O. Plug Size
			Roughing Dimensions				Body		
			A*	B	C	D	Height E	Width F	
8560-SC-75	75	04(100)	21 1/2(545)	15 1/2(395)	50 3/4(1290)	37(940)	30 1/2(775)	3(76)	
8565-SC-100	100	04(100)	27(685)	16 1/2(420)	54 3/4(1390)	43 1/2(1105)	33 1/2(850)	3(76)	
8570-SC-150	150	05(125)	33(840)	17 1/2(545)	60 3/4(1543)	50 1/2(1283)	38 1/2(980)	4(100)	
8575-SC-200	200	05(125)	37(940)	17 1/2(545)	67 3/4(1720)	54 1/2(1385)	43 1/2(1105)	4(100)	
8580-SC-250	250	05(125)	40(1015)	18(455)	73 3/4(1875)	58(1473)	47 1/2(1205)	4(100)	
8585-SC-350	350	05(125)	43 1/2(1105)	18(455)	85 3/4(2178)	61 1/2(1562)	54 1/2(1385)	4(100)	
8590-SC-500	500	06(150)	48(1220)	18(455)	103 1/4(2623)	66(1615)	64 1/2(1640)	5(125)	

*Available with larger inlet and outlet when specified.



Arrangement shown with left hand tank. Right hand tank is mirror image.

REGULARLY FURNISHED:

Steel Interceptor with Gray Duco Coating Inside and Outside and Flow Control Fitting.

VARIATIONS:

- Anchor Flange -F
- Flange and Flashing Clamp -F-C
- Integral Extension -E (Specify Height eg: -E12 for 12" (305) Ext.)
- NO-HUB Adaptor (4) Req'd (Specify Fig. 2646Y)
- Traffic Rated Cover-H20
- Flow Control Fitting Inside

OPTIONAL MATERIALS:

- Acid Resistant Coating Inside - ARI
- Acid Resistant Coating Outside - ARO
- Acid Resistant Coating Inside and Outside - ARIO
- Aluminum Cover -AC

NOTE: Dimensions shown in parentheses are in millimeters.

DRAWING NUMBER
8560-SC-CAN
SERIESSIZE
ASCALE:
NONEDATE:
09/20/07APPROVED BY:
BWCHECKED BY:
BWDRAWN BY:
JJ

8560-SC-CAN

WE CAN ASSUME NO RESPONSIBILITY FOR USE OF SUPERSEDED OR VOID DATA

DIMENSIONS ARE SUBJECT TO MANUFACTURERS TOLERANCE AND CHANGE WITHOUT NOTICE

A	10-11-07	Revised Figure Number	RN	BW
REV.	DATE	DESCRIPTION	BY	CKD. BY

WEIGHT
POUNDSVOLUME
CUBIC FEET

FIGURE NUMBER

8560-SC-CAN

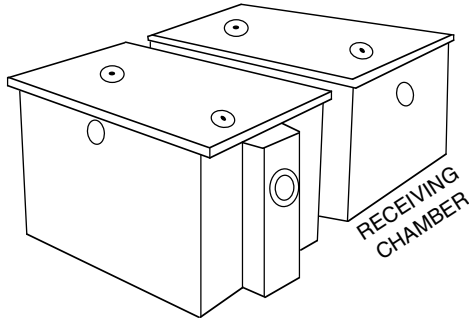


JAY R. SMITH CO.
 PLUMBING & DRAINAGE PRODUCTS
 959 Alness Street, North York, Ontario M3J 2J1
 TEL: (416) 736-9610 FAX: (416) 736-3789

LOCATION

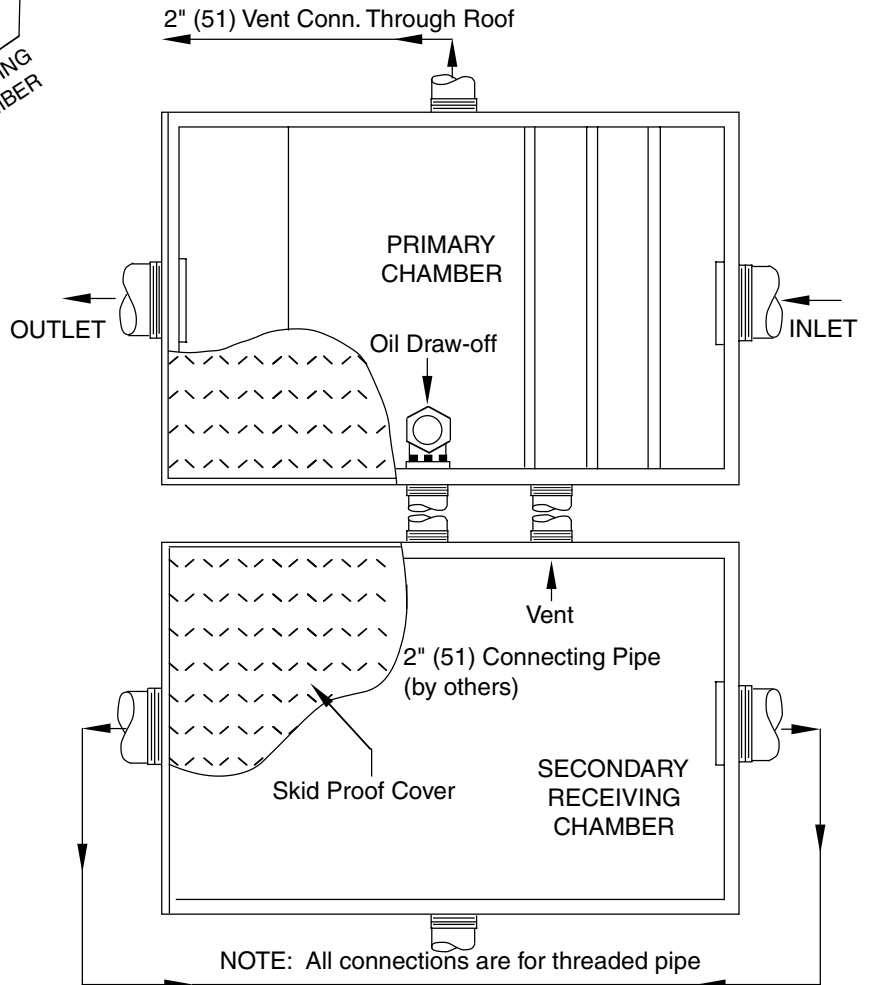
Recommended Installation of Oil Interceptor with Receiving Chamber

ALL STEEL OIL INTECEPTORS



Arrangement shown with left hand tank. Right hand tank is mirror image.

NOTE: Dimensions shown in parentheses are in millimeters.



2" (51) vent connection joined above flood level, extended through roof and terminated 12" (305) above primary chamber vent.

DRAWING NUMBER
S8560-SC-CAN-BS
Series

SIZE
A

SCALE:
NONE

DATE:
09/20/07

APPROVED BY:
BW

CHECKED BY:
BW

DRAWN BY:
JJ

8560-SC-CAN-BS

WE CAN ASSUME NO RESPONSIBILITY FOR USE OF SUPERSEDED OR VOID DATA

DIMENSIONS ARE SUBJECT TO MANUFACTURERS TOLERANCE AND CHANGE WITHOUT NOTICE

A	10-11-07	Revised Figure Number	RN	BW
REV.	DATE	DESCRIPTION	BY	CKD. BY

WEIGHT POUNDS	VOLUME CUBIC FEET	FIGURE NUMBER
		8560-SC-CAN-BS