



# JAY R. SMITH inc.

PLUMBING & DRAINAGE PRODUCTS

959 Alness Street, North York, Ontario M3J 2J1

TEL: (416) 736-9610 FAX: (416) 736-3789

LOCATION

## OIL INTERCEPTORS

### LARGE CAPACITY - STEEL OIL INTERCEPTORS

**FUNCTION:** Large capacity oil interceptors are used in large garages, service areas and industrial plants where waste laden with oil and sediment must be intercepted. The intercepted oils are drawn off by gravity to a storage tank or container. Any sediment which is included in the discharge is collected in a large sediment bucket and periodically removed. Interceptors should not be located directly in traffic areas. If required, specify extra heavy duty traffic cover.

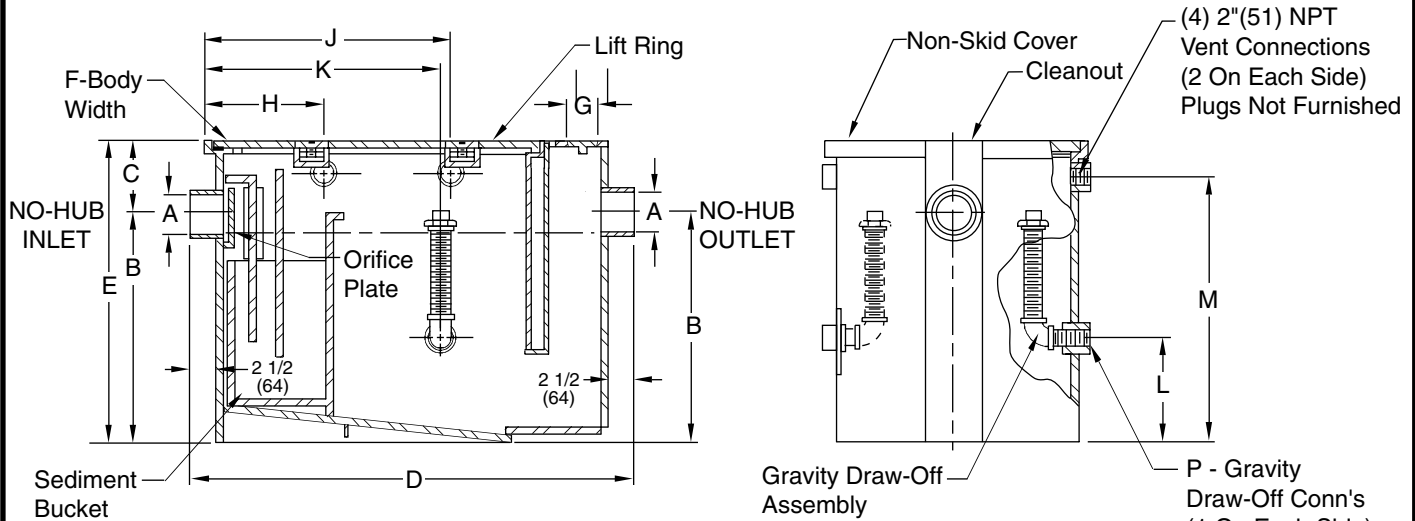


Fig. 8560 Shown

**NOTE:** Interceptor shall be vented on outlet side per local code requirements.

**NOTE:** It is the responsibility of the installer to check all parts (internal and external) to verify they are in their proper operating order and location.

| PCN/<br>Fig. No. | GPM<br>Flow Rate | Inlet and<br>Outlet<br>Size | Dimensions             |             |               |              |              |        | C.O.<br>Plug<br>Size | Dimensions   |              |             |              |           |   | Draw-<br>Off |
|------------------|------------------|-----------------------------|------------------------|-------------|---------------|--------------|--------------|--------|----------------------|--------------|--------------|-------------|--------------|-----------|---|--------------|
|                  |                  |                             | Roughing<br>Dimensions |             |               | Body         |              |        |                      | Dimensions   |              |             |              |           |   |              |
|                  |                  |                             | A*                     | B           | C             | D            | Height       | Width  |                      | G            | H            | J           | K            | L         | M |              |
| 8560             | 75               | 04(100)                     | 21 1/2(545)            | 15 1/2(395) | 50 3/4(1290)  | 37(940)      | 30 1/2(775)  | 3(76)  | 10(255)              | 32(815)      | 28 1/4(720)  | 13(330)     | 32 3/4(830)  | 2(51)     |   |              |
| 8565             | 100              | 04(100)                     | 27(685)                | 16 1/2(420) | 54 3/4(1390)  | 43 1/2(1105) | 33 1/2(850)  | 3(76)  | 11(280)              | 35(890)      | 30 1/4(770)  | 18 1/2(470) | 39 1/4(995)  | 2(51)     |   |              |
| 8570             | 150              | 04(100)                     | 33(840)                | 17 1/2(545) | 60 3/4(1543)  | 50 1/2(1283) | 38 1/2(980)  | 4(100) | 15(380)              | 36(915)      | 34 1/4(870)  | 23 1/2(595) | 46 1/4(1175) | 2 1/2(64) |   |              |
| 8575             | 200              | 04(100)                     | 37(940)                | 17 1/2(545) | 67 3/4(1720)  | 54 1/2(1385) | 43 1/2(1105) | 4(100) | 14 1/2(370)          | 44 1/2(1130) | 38 1/4(970)  | 27 1/2(700) | 50 1/4(1275) | 2 1/2(64) |   |              |
| 8580             | 250              | 04(100)                     | 40(1015)               | 18(455)     | 73 3/4(1875)  | 58(1473)     | 47 1/2(1205) | 4(100) | 16(405)              | 48(1220)     | 42 1/4(1075) | 30 1/2(775) | 53 3/4(1365) | 2 1/2(64) |   |              |
| 8585             | 350              | 04(100)                     | 43 1/2(1105)           | 18(455)     | 85 3/4(2178)  | 61 1/2(1562) | 54 1/2(1385) | 4(100) | 18(455)              | 58(1475)     | 50 1/4(1275) | 34(865)     | 57 1/4(1455) | 2 1/2(64) |   |              |
| 8590             | 500              | 06(150)                     | 48(1220)               | 18(455)     | 103 1/4(2623) | 66(1615)     | 64 1/2(1640) | 5(125) | 20(510)              | 72(1830)     | 62 1/4(1580) | 38(965)     | 61 3/4(1570) | 2 1/2(64) |   |              |

\*Available with larger inlet and outlet when specified.

**NOTE:** Dimensions shown in parentheses are in millimeters.

**REGULARLY FURNISHED:**  
Steel Interceptor with Gray Duco Coating Inside and Outside and Internal Flow Control Orifice Plate.

**NOTE:** 2" (51) min. extension available. Anchor flange & flashing clamp not available on less than 4"(100) extension.

**VARIATIONS:**

- Anchor Flange -F
- Flange and Flashing Clamp -F-C
- Integral Extension -E (Specify Height eg: -E12 for 12" (305) Ext.)
- Extra Heavy Duty Traffic Cover -H20

|      |         |  |     |         |                  |                      |                                  |
|------|---------|--|-----|---------|------------------|----------------------|----------------------------------|
| E    | 5-8-06  | Revised Drawing & Note<br>Revised Table, Dimension<br>Revised Table, Dimension<br>Revised Table, Dimension | RN  | CL      | WEIGHT<br>POUNDS | VOLUME<br>CUBIC FEET | FIGURE NUMBER<br><b>8560-CAN</b> |
| D    | 2-13-06 |  | RN  | CL      |                  |                      |                                  |
| C    | 12-8-05 |  | RN  | CL      |                  |                      |                                  |
| B    | 9-8-05  |  | TBW | CL      |                  |                      |                                  |
| REV. | DATE    | DESCRIPTION  | BY  | CKD. BY |                  |                      |                                  |

DRAWING NUMBER  
8560-CAN

SCALE: NONE

DATE: 4-19-96

APPROVED BY: BS

CHECKED BY: WMS

DRAWN BY: CMD

**8560-CAN**

WE CAN ASSUME NO RESPONSIBILITY FOR USE OF SUPERSEDED OR VOID DATA

DIMENSIONS ARE SUBJECT TO MANUFACTURERS TOLERANCE AND CHANGE WITHOUT NOTICE